

The Majestic

ALL INFORMATION PRESENTED BELOW IS CORRECT AT THE TIME OUR BROCHURE WENT TO PRINT. PLEASE BE AWARE THAT IN THE EVENT THAT A SUBSTITUTION IS MADE, THE NUTRITIONAL AND ALLERGEN INFORMATION MAY NOT REFLECT THESE ITEMS.

WHILST EVERY EFFORT IS MADE TO CONFORM TO PRODUCT LISTINGS, IN THE EVENT A SUBSTITUTION IS MADE IT WILL BE WITH PRODUCTS OF SIMILAR OR HIGHER QUALITY AND VALUE.

IF YOU HAVE ANY CONCERNS REGARDING ALLERGENS OR ANY OTHER DIETARY NEEDS, PLEASE CONTACT US.

(NL) Kaasbaguettes met zongedroogde tomaat
Ingrediënten: **tarwebloem (gluten)**, plantaardige oliën (raap, palm), Double Gloucester kaas 12% (**melk**, aardappelzetmeel, zout, zuursel, vegetarisch stremsel, kleurstof: E160b(ii)), zongedroogde tomaat 5%, **scharrelei**, bakkersgist, zout, **melkpoeder**, tomatenpoeder, suiker, zonnebloemolie, kruiden (bevat **selderij**), specerijen, uipoeder, azijn, emulgator: E471, gistextract, voedingszuur: citroenzuur, antioxidant: ascorbinezuur, natuurlijk aroma. Kan sporen van **noten, sesam** en **soja** bevatten.

(UK) Cheese baguettes with sun dried tomato
Ingredients: **wheat flour (gluten)**, vegetable oils (rapeseed, palm), Double Gloucester cheese 12% (**milk**, potato starch, salt, starter culture, vegetarian rennet, colour: E160b(ii)), sun dried tomato 5%, **barn egg**, yeast, salt, **dried milk**, tomato powder, sugar, sunflower oil, herbs (contain **celery**), spices, onion powder, vinegar, emulsifier: E471, yeast extract, acidity regulator: citric acid, antioxidant: ascorbic acid, natural flavouring. May contain traces of **nuts, sesame** and **soya**.

(DE) Käsegebäck mit sonnengetrockneten Tomaten
Zutaten: **Weizenmehl (Gluten)**, pflanzliche Öle (Raps, Palme), Double Gloucesterkäse 12% (**Milch**, Kartoffelstärke, Salz, Säurewecker, vegetarisches Lab, Farbstoff: E160b(ii)), sonnengetrocknete Tomaten 5%, **Eier aus Bodenhaltung**, Hefe, Salz, **Milchpulver**, Tomatenpulver, Zucker, Sonnenblumenöl, Kräuter (enthält **Sellerie**), Gewürze, Zwiebelpulver, Essig, Emulgator: E471, Hefeextrakt, Säuerungsmittel: Citronensäure, Antioxydationsmittel: Ascorbinsäure, natürliches Aroma. Kann Spuren von **Schalenfrüchten, Sesamsamen** und **Soja** enthalten. Die Füllhöhe ist technisch bedingt.

(FR) Biscuits au fromage et aux tomates séchées au soleil • Ingrédients: **farine de blé (gluten)**, huiles végétales (colza, palme), fromage de Double Gloucester 12% (**lait**, amidon de pomme de terre, sel, acide lactique, préure végétarienne, colorant: E160b(ii)), tomates séchées au soleil 5%, **œufs de poules élevées au sol**, levure, sel, **lait en poudre**, tomate en poudre, sucre, huile de tournesol, herbes (contient **céleri**), épices, oignon en poudre, vinaigre, émulsifiant: E471, extrait de levure, acidifiant: acide citrique, antioxydant: acide ascorbique, arôme naturel. Peut contenir des traces de **fruits à coque, sésame** et **soja**.

(SE) Ostkex med soltorkade tomater • Ingredienser: **vetemjöl (gluten)**, vegetabiliska oljor (raps, palm), Double Gloucester ost 12% (**mjölk**, potatisstärkelse, salt, mjölkkultur, ystenzym, färgämne: E160b(ii)), soltorkade tomater 5%, **ägg från frigående höns inomhus**, jäst, salt, **mjölkpulver**, tomatpulver,

socker, solrosolja, örter (innehåller **selleri**), kryddor, lökpulver, vinäger, emulgeringsmedel: E471, jästextrakt, surhetsreglerande medel: citronsyra, antioxidanter: askorbinsyra, naturlig arom. Kan innehålla spår av **nötter, sesam** och **soja**.

(DK) Ostesnacks med soltørrede tomater • Ingredienser: **hvedemel (gluten)**, vegetabiliske olier (raps, palme), Double Gloucester ost 12% (**mælk**, kartoffelstivelse, salt, starter kultur, vegetarisk osteløbe, farve: E160b(ii)), soltørrede tomater 5%, **skrabeæg**, gær, salt, **mælkepulver**, tomatpulver, sukker, solsikke olie, urter (indeholder **selleri**), krydderier, løgpulver, eddike, emulgator: E471, gærekstrakt, surhedsregulerende middel: citronsyre, antioxidant: ascorbinsyre, naturlig aroma. Kan indeholde spor af **nødder, sesam** og **soja**.

(NO) Ostekjeks med soltørkede tomater • Ingredienser: **hvetemel (gluten)**, vegetabilisk olje (raps, palme), Double Gloucester ost 12% (**melk**, potetstivelse, salt, starterkultur, vegetarisk løype, farge (E160b(ii))), soltørkede tomater 5%, **egg fra frittgående høner**, gjær, salt, **melkepulver**, tomatpulver, sukker, solsikkerolje, urter (inneholder **selleri**), krydder, løkpulver, eddik, emulgator (E471), gjærekstrakt, syrerregulator (sitronsyre), antioksidant (askorbinsyre), naturlig smak. Allergeninformasjon: se ingredienser i **fet** skrift. Kan inneholde spor av **nøtter, sesam** og **soya**.

(ES) Galletas de queso y tomates secados al sol
Ingredientes: **harina de trigo (gluten)**, aceites vegetales (colza, palma), Double Gloucester queso 12% (**leche**, almidón de patata, sal, cultivos de fermentación, cuajo vegetariano, colorante: E160b(ii)), tomates secados al sol 5%, **huevos de gallinas criadas en el suelo**, levadura, sal, **leche en polvo**, tomate en polvo, azúcar, aceite de girasol, hierbas (contiene **apio**), especias, cebolla en polvo, vinagre, emulsionante: E471, extracto de levadura, acidulante: ácido cítrico, antioxidante: ácido ascórbico, aroma natural. Puede contener trazas de **frutos de cáscara, sésamo** y **soja**.

(IT) Biscotti salati al formaggio e pomodori secchi
Ingredienti: **farina di frumento tipo '0' (glutine)**, oli vegetali (colza, palma), Double Gloucester formaggio 12% (**latte**, amido di patate, sale, fermenti lattici, caglio vegetariano, colorante: E160b(ii)), pomodori secchi 5%, **uova da allevamento a terra**, lievito, sale, **latte in polvere**, pomodoro in polvere, zucchero, olio di girasole, erbe (contiene **sedano**), spezie, cipolla in polvere, aceto, emulsionante: E471, estratto di lievito, acidificante: acido citrico, antiossidante: acido ascorbico, aromi naturali. Può contenere tracce di **nocci, sesamo** e **soia**.

75g e

Trademark of / manufactured by

Buiteman bv, Mon Plaisir 93,
4879 AM Etten-Leur, The Netherlands,
www.buiteman.com

Imported to the UK by

RH Amar, Turnpike Way, HP12 3TF, UK



RSPO-1106273

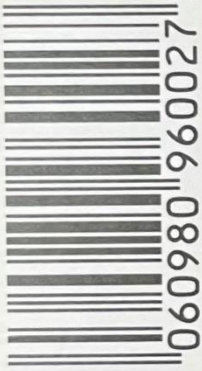
COCOA DUSTED TRUFFLES

INGREDIENTS: VEGETABLE OILS (COCONUT, PALM KERNEL), SUGAR, FAT REDUCED COCOA POWDER, WHEY POWDER (**MILK**), COCOA POWDER, EMULSIFIER (**SOYA LECTHIN**).

ALLERGY ADVICE:

FOR ALLERGENS, SEE INGREDIENTS IN BOLD. MAY CONTAIN TRACES OF **BARLEY, EGGS, NUTS, SESAME AND WHEAT.** SUITABLE FOR VEGETARIANS.

MONTY BOJANGLES COMPANY LTD.
LEGION HOUSE, 75 LOWER ROAD,
KENLEY, CR8 5NH.
MONTY BOJANGLES EUROPE LTD.,
THE MOUNT, 2 WOODSTOCK LINK,
BELFAST, BT6 8DD
TEL: +44(0)20 8668 5261



NUTRITION INFORMATION	TYPICAL VALUES PER 100g
energy	2492 kJ 600 kcal
fat	46g
of which saturates	39g
carbohydrate	41g
of which sugars	39g
protein	4.2g
salt	0.10g

FOR THE GIDDILY CURIOUS:
email: info@montybojangles.com
or visit our website: montybojangles.com
THESE CHOCGY SCOTTIES ARE BEST
PLACED IN A COOL DRY PLACE

NOV 2024
L223208-05782 1003

Best before end:



DISCOVER THE PLEASURE
OF VELVETY GIANDUJA
MILK CHOCOLATE ENROBING
CRUNCHY WHOLE
ROASTED HAZELNUTS



LINDT & SPRÜNGLI
MAÎTRE CHOCOLATIER SUISSE
DEPUIS 1845



(en) Gianduja hazelnut milk chocolate
with whole hazelnuts

Ingredients: sugar, ground hazelnuts (22%), whole hazelnuts (19%), cocoa mass, cocoa butter, whole milk powder, almonds (0.1%), emulsifier (soya lecithin), flavouring. May contain walnuts and other nuts. Milk chocolate contains: Cocoa solids: 33% min., Milk solids: 12% min.

(es) Bombones de chocolate con leche
con avellanas gianduja y avellanas enteras

Ingredientes: azúcar, avellanas trituradas (22%), avellanas enteras (19%), pasta de cacao, manteca de cacao, leche en polvo, almendras (0,1 %), emulgente (lecitina de soia), aroma. Puede contener nueces y otros frutos de cáscara. Fracción de chocolate con leche contiene cacao: 33% mínimo.

(pt) Bombons de chocolate de leite com
frutos de casca rija gianduja e avelãs inteiras
Ingredientes: açúcar, avelãs moídas (22%), avelãs
inteiras (19%), pasta de cacau, manteiga de
cacau, leite em pó, amendoas (0,1 %),
emulsionante (lecitina de soia), aroma. Pode
conter nozes e outros frutos de casca rija. Fração
de chocolate de leite contém cacau: 33%
mínimo.

Store in a cool and dry place / Conservar en lugar
fresco y seco / Conservar em local fresco e seco

NON-EU COCOA/CACAO NO-UE/CACAO NÃO-UE/
EU AND NON-EU HAZELNUTS/
AVELLANAS UE Y NO-UE/AVELÃS UE E NÃO-UE

Distributed by: Lindt & Sprüngli (UK) Ltd., United
Kingdom: 4 New Square, Feltham, Middlesex,
TW14 8HA. Republic of Ireland: PO BOX 13038,
Dublin 18. Lindt & Sprüngli (China) Ltd., Unit
1901&1906 No. 429, North Nanquan Road,
Shanghai, China, 200120

Distribuido/Distribuído por: Lindt & Sprüngli
(Espana) S.A., Marina 16-18, ES-08005 Barcelona

NET WT
PESO NETO
PESO LIQUIDO

165g e

Best before: / Consumir preferentemente antes del: /
Consumir de preferència antes de:

QUALITY GUARANTEE
CHOCOLAFABRIKEN LINDT & SPRÜNGLI AG

MANUFACTURED BY:
LINDT & SPRÜNGLI SPA
21056 INDUNO OLONA (VA) ITALY

LINDT SUSTAINABILITY
www.lindt.com



31 10 2024 L257350

Assortiment van pralines - Ingrédients: suiker, volle melkpoeder, cacaoassa, cacaooter, hazelnoten 6%, gesuikerde gecondenseerde volle melk, palmvet, glucosesiroop, boterolie (melk), melksuiker, dextrose, alcohol, kofie-extract 0,04%, emulgatoren: lecithinen (o.a. soja), stabilisator: E420, aroma's: karamel, framboos, sinaasappel en vanille. Chocolade: ten minste 50% cacaobestanddelen. Melkchocolade: ten minste 29% cacaobestanddelen. Witte chocolade: ten minste 23% cacaobestanddelen. Kan sporen van andere noten bevatten. Assortiment de bonbons de chocolat - Ingrédients: sucre, lait entier en poudre, pâte de cacao, beurre de cacao, noisettes 6%, lait entier concentré sucré, graisse de palme, sirop de glucose, huile butyrique (lait), sucre de lait, dextrose, alcool, extrait de café 0,04%, émulsifiants: lecithines (e.a. soja), stabilisant: E420, arômes: caramel, framboise, orange et vanille. Cacao: 50% minimum (dans le chocolat). Cacao: 29% minimum (dans le chocolat au lait). Cacao: 23% minimum (dans le chocolat blanc). Peut contenir des traces d'autres fruits à coque. Assorted chocolates - Ingredients: sugar, whole milk powder, cocoa mass, cocoa butter, hazelnuts 6%, sweetened condensed whole milk, palm fat, glucose syrup, butter oil (milk), milk sugar, dextrose, alcohol, coffee extract 0.04%, emulsifiers: lecithins (incl. soy), stabilizer: E420, flavourings: caramel, raspberry, orange and vanilla. Cocoa solids: chocolate: min. 50%, milk chocolate: min. 29%, white chocolate: min. 23%. Milk solids: milk chocolate: min. 24%, white chocolate: min. 27%. May contain traces of other nuts. Imported by: Hamlet Chocolates UK Ltd., Shearway Business Park, Shearway Road, Folkestone CT19 4RH, United Kingdom. Pralinenmischung - Zutaten: Zucker, Vollmilchpulver, Kakaomasse, Kakaobutter, Haselnüsse 6%, gezuckerte Kondensmilch, Palmfett, Glukosesirup, Butterfett (Milch), Milchsücker, Dextrose, Alkohol, Kaffee-Extrakt 0,04%, Emulgatoren: Lecithine (u.a. Soja), Stabilisator: E420, Aromen: Karamel, Himbeere, Orange und Vanillearoma. Kakao: 50% mindestens im Schokoladenanteil. Kakao: 29% mindestens im Milchschokoladenanteil. Kakao: 23% mindestens im Anteil weiße Schokolade. Kann Spuren von anderen Schalenfrüchten enthalten. Surtido de bombones de chocolate - Ingredientes: azúcar, leche entera en polvo, pasta de cacao, manteca de cacao, avellanas 6%, leche entera condensada azucarada, grasa de palma, jarabe de glucosa, aceite de mantecaquilla (leche), azúcar de la leche, dextrosa, alcohol, extracto de café 0,04%, emulgentes: lecitinas (incl. soja), estabilizante: E420, aromas: caramelo, frambuesa, naranja y vainilla. Porcentaje de cacao: Chocolate, cacao: 50% mínimo; Chocolate con leche, cacao: 29% mínimo; Chocolate blanco, cacao: 23% mínimo. Puede contener trazas de otros frutos de cáscara. Sortido de bombons de chocolate - Ingredientes: açúcar, leite em pó gordo, pasta de cacau, manteiga de cacau, avelãs 6%, leite gordo condensado açucarado, gordura de palma, xarope de glicose, óleo de manteiga (leite), açúcar do leite, dextrose, álcool, extrato de café 0,04%, emulsionantes: lecitinas (incl. soja), estabilizante: E420, aromas: caramelo, framboesa, laranja e baunilha. Percentagem de cacau: chocolate - cacau: 50% mínimo; chocolate de leite - cacau: 29% mínimo; chocolate branco - cacau: 23% mínimo. Pode conter outros frutos de casca rija em quantidades vestigiais. Blandning av praliner - Ingredienser: socker, helmjölkspulver, kakaomassa, kakaosmör, hasselnötter 6%, sötad kondenserad helmjolk, palmfett, glukossirap, smörolja (mjölk), mjölksocker, dextros, alkohol, kaffeextrakt 0,04%, emulgeringsmedel: lecitiner (bl.a. soja), stabilisator: E420, aromer: karamell, hallon, apelsin och vanilj. Kakaohalt: choklad: min. 50%, mjölkchoklad: min. 29%, vit choklad: min. 23%. Kan innehålla spår av andra nötter. Sokolaadikomplekide assortii - Koostis: suhkur, täispiimapulber, kakaomass, kakaovõi, sarapuupähklid 6%, magus kondenspiim, palmirasv, glukoosisirup, võiõli (piima), piimasuhkur, dekstroos, alkohol, kofivekstrakt 0,04%, emulgatorid: leitsitiinid (sh. soja), stabilisaator: E420, lõhna- ja maitseained: karamell, vaarikas, apelsin ja vanill. Kakaokuiuaine sisaldus: sokolaadis vähemalt 50%, piimasokolaadis vähemalt 29%, valges sokolaadis vähemalt 23%. Võib sisaldada vähesel määral muid pähkleid. Mix czekoladek - Składniki: cukier, mleko w proszku, miazga kakaowa, tłuszcz kakaowy, orzechy laskowe 6%, słodzone skondensowane mleko, tłuszcz palmowy, syrop glukozowy, olej masłany (mleko), cukier mleczny, dekstroza, alkohol, ekstrakt kawy 0,04%, emulgatory: lecytyny (m.in. soi), stabilizator: E420, aromaty: karmel, malina, pomarańcza i waniliowy. Czekolada: masa kakaowa minimum 50%, czekolada mleczna: masa kakaowa minimum 29%, biała czekolada: masa kakaowa minimum 23%. Może zawierać śladowe ilości innych orzechów. Cokoládové bombóny formované - Složení: cukr, sušené plnotučné mléko, kakaová hmota, kakaový, kakaové máslo, liskové ořechy 6%, slazené kondenzované plnotučné mléko, palmový tuk, glukózový sirup, maslový olej (mléko), mléčný cukr, dextroza, alkohol, kávový extrakt 0,04%, emulgátory: lecitiny (vc. soji), stabilizátor: E420, aromata: karamel, malinik, pomeranč a vanília. Obsah kakaového sušiny v čokoláde nejméně 50%, v mléčné čokoláde nejméně 29%, v bílé čokoláde nejméně 23%. Může obsahovat stopy dalších orchů. Szines, diszobozos belga vegyes praliné - Összetevők: cukor, teljes tejpor, kakaó-massza, kakaóvaj, moggyoró 6%, cukrozott süített teljes tej, pálmazsír, glükóz szirup, vaj olaj (tej), tejcukor, dekstróz, alkohol, kávé kivonat 0,04%, emulgealoszerek: lecitinek (többek között szójat), stabilizátor: E420, aromák: karamel, málna, narancs és vanília. Kakaó szárazanyag tartalom a csokoládében: min.50%. Kakaó szárazanyag tartalom a tejsokoládében: min.29%. Kakaó szárazanyag tartalom a fehér csokoládében: min.23%. Nyomokban egyéb dióféléket tartalmazhat. Rainforest Alliance Certified. Find out more at ra.org.

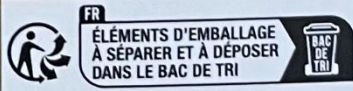
Voedingswaarden/Valeurs nutritionnelles/Nutrition information/Durchschnittliche Nährwerte/Valores nutricionales/Valores nutricionais/Näringsvärde/Toitumisalane teave/Wartości odżywcze/Wyživové hodnoty/Atlagos tápérték	100 g	25 g ±2 (%)
Energie/Energie/Energy/Energie/Valor energético/Energia/Energi/ Energiasisaldus/Energia/Energetická hodnota/Energia:	2200 kJ 526 kcal	550kJ 132 kcal
Vetten/Matières grasses/Fat/Fett/Grasas/Lípidos/Fett/Rasvad/Tuszcz/Tuky/Zsír:	30 g	7,6 g
- waarvan verzadigde vetzuren/dont acides gras saturés/of which saturates/davon gesättigte Fettsäuren/de las cuales saturadas/dos quais saturados/varav mättat fett/millest küllastunud rasvhapped/w tym kwasy nasycone/z toho nasycené mastné kyseliny/amelyből telített zsírsavak:	16 g	4,1 g
Koolhydraten/Glucides/Carbohydrate/Kohlenhydrate/Hidratos de carbono/Hidratos de carbono/Kolhydrat/Süsvikesikud/Węglowodony/Sacharidy/Szénhidrát:	56 g	14 g
- waarvan suikers/dont sucres/of which sugars/davon Zucker/de los cuales azúcares/dos quais açúcares/varav sockerarter/millest suhkruud/w tym cukry/z toho cukry/amelyből cukrok:	54 g	13 g
Eiwitten/Protéines/Protein/Eiweiß/Proteínas/Proteínas/Protein/ Valgud/Białko/Bilkoviny/Fehérje:	6,2 g	1,6 g
Zout/Sel/Salt/Salz/Sal/Sal/Sool/Sól/Sül/Só:	0,16 g	0,04 g

5 porties van/portions de/servings of/Portionen à/porciones de/porções de/portioner av/portsjonit/porcji po/porci po/adag 25 g. 10 (*) stuks/pièces/pieces/Stücke/piezas/unidades/styck/tükki/sztuk(i)/kusu/darab.

Gefabriceerd in België. Fabriqué en Belgique. Made in Belgium. Hergestellt in Belgien. Producido en Bélgica. Fabricado na Bélgica. Tillverkad i Belgien. Valmistatud Belgias. Wyprodukowano w Belgii. Zerné püvodu: Belgie. Származási hely: Belgium.

Koel en droog bewaren. A conserver au sec et au frais. Keep cool and dry. Kühl und trocken lagern. Conservar en lugar fresco y seco. Conservar em local fresco, seco e isento de odores. Não expor à luz solar. Förvaras svalt och torr. Hoida kuivas ja jahedas. Przechowywać w chłodnym i suchym miejscu. Uchovajte v suchu a chladu. Száras, hűvös helyen tartando. Min. +5°C/41°F - Max. +20°C/68°F

Ten minste houdbaar tot: zie zijkant. A consommer de préférence avant le: voir sur le côté. Best before: see side. Minstens houdbaar bis: siehe Seite. Consumir preferentemente antes del: ver lateral. Consumir de preferência antes de/L: ver na lateral da embalagem. Bäst före: se sidan. Parim enne: vt küljelt. Najlepiej spożyć przed: patrz z boku. Minimální trvanlivost do: viz strana obalu. Minőségét megőrzi (nap, hónap, év): lásd a csomag oldalán.



Nettogewicht/Poids net/Net weight/Nettogewicht/Peso neto/Peso líquido/Nettovikt/Netokaal/Masa neto/Hmotnost/Netto tömeg.

125 g e Net Wt. 4.4 oz

Hamlet nv - Kerkstraat 77, BE-9120 Vrasene - Tel.: +32 3 750 99 50



GRANDMA WILD'S
—1899—

Luxury Hand Decorated **DARK CHOCOLATE SHORTBREAD TREES**
Fully Coated Dark Chocolate All Butter Shortbread Shaped Biscuits

Ingredients: Dark chocolate coating (33%) (cocoa mass, sugar, cocoa butter, **milk** fat, emulsifier: **soya** lecithin, natural vanilla flavouring), **wheat** flour (**wheat** flour, Calcium Carbonate, Iron, Niacin, Thiamin), salted butter (18%) (cream: **milk**, salt), sugar, maize starch, rice flour, sugar crunch sparkle (sugar, water, glazing agent: E904; colours: E172, E171; glucose syrup).
Dark chocolate coating contains: cocoa solids 52% minimum.

For allergens, including cereals containing gluten, see ingredients in **bold**. Not suitable for nut & sesame allergy sufferers:
may also contain traces of egg, mustard, peanut and gluten sources (oat, spelt, rye, barley).
Suitable for vegetarians.

Storage Conditions: Store in a cool dry place avoiding direct sunlight. Once opened, keep in an airtight container and consume within 30 days.

Nutritional Information:

Typical Values	Per 100g	Per Biscuit
Energy (kJ/kcal):	2189/521	602/143
Fat (g):	29	8
Of which saturates	19	5
Carbohydrate (g):	57	16
Of which sugars	24	7
Protein (g)	5.4	1.5
Salt (g)	0.43	0.12

For Best Before: **165g e**
See side of box



1434

**CHEDDAR
CHEESE BISCUITS**

INGREDIENTS **Wheat** Flour, Margarine (Rapeseed Oil, Responsibly Sourced Palm Oil, Water, Salt, Emulsifier: Mono- and Diglycerides Of Fatty Acids, Acidity Regulator: Citric Acid, Natural Flavouring), Matured Cheddar Cheese (22%) (**Milk**, Salt, Starter Culture, Rennet, Natural Colouring), **Egg**, Yeast, Dried **Milk**, Salt, Sugar, Potato Starch, Spices, Yeast Extract, Emulsifier: Mono- and Diglycerides Of Fatty Acids, Colour: Paprika Extract.

For allergens, see ingredients in **bold**. May also contain traces of Nuts and Sesame.

NUTRITIONAL (PER 100G)

Energy 2283kj (548kcal), Fat 35g, Of Which Saturates 15g, Carbohydrate 44g, Of Which Sugars 0.9g, Fibre 2.9g, Protein 13g, Salt 2.4g.

ONCE OPENED STORE IN A COOL, DRY PLACE, IN AN AIRTIGHT CONTAINER.

cartwrightandbutler.co.uk

MADE IN THE NETHERLANDS FOR CARTWRIGHT & BUTLER
PO BOX 298 BEVERLEY HU17 6FG UK
CARTWRIGHT & BUTLER, JOYCE HOUSE, 21-23 HOLLES STREET,
DUBLIN 2, IRELAND

CARTWRIGHT & BUTLER® IS A REGISTERED TRADEMARK

100g e



5 060301 882175

BEST BEFORE
SEE TIN

Lily O'Brien's

**Creamy
Caramel &
Sea Salt**

**Devilishly handsome and
super slick, this creamy choc
is one smooth operator**

A dash of sea salt lifts our beloved creamy caramel combined with milk chocolate to form the perfect treat! I can't wait for you to tear open this bag and start the latest chapter of the Lily O'Brien story – a range of mouth-watering chocolate discs created for you to enjoy your favourite treat anywhere. Open the bag and melt into your perfect chocolate moment. Keep it just for yourself or share! And remember that your love for chocolate is at the heart of everything I do. You are part of the Lily O'Brien story too.

Lily O'Brien

Ingredients Milk Chocolate 75% [Sugar, Whole **Milk** Powder, Cocoa Butter, Cocoa Mass, Emulsifier (**Soya Lecithin**), Natural Vanilla Flavouring], Sticky Toffee Caramel 24.8% [Sugar, Glucose Syrup, Coconut Oil, Water, Sweetened Skimmed Condensed Milk (**Milk**, Sugar, Lactose (**Milk**)), Milk Chocolate (Sugar, Cocoa Butter, Cocoa Mass, Whole **Milk** Powder, Whey Powder (**Milk**), Emulsifier (**Soya Lecithin**), Butter (**Milk**), Salt)], Sea Salt (0.1%), Natural Flavouring.

Nutritional Information

Nutrition Information Typical Values	per 100g	per serving (40g - Approx. 4 pieces)
Energy	2142kJ/ 512kcal	857kJ/ 205kcal
Fat	27g	11g
of which saturates	18g	7.2g
Carbohydrate	60g	24g
of which sugars	56g	22g
Fibre	1.6g	0.6g
Protein	5.6g	2.2g
Salt	0.33g	0.13g

For maximum taste and enjoyment, please store your Lily O'Brien's chocolates in a cool dry place 15-18°C away from moisture, strong sunlight and odours.

Milk Chocolate contains Cocoa Solids 30% minimum, Milk Solids 20% minimum.

**Contains no artificial colours or flavours.
Suitable for vegetarians.**



For Allergens see ingredients listed in bold. May also contain Nuts, Peanuts & Cereals containing Gluten.

ROSEMARY BIG MINIS BREADSTICKS FOR DIPPING

Ingredients: **Wheat** flour (contains Calcium, Iron, Niacin, Thiamin), Durum **Wheat** Semolina, Extra Virgin Olive Oil Yeast, Salt, Rosemary (1%).

For allergens: Please see ingredients in **bold**

Suitable for vegetarians and vegans

Once opened store in an airtight container

Nutritional information	Typical values per stick	Typical values per 100g
Energy	36kJ 8kcal	1779kJ 422kcal
Fat	0.2g	11g
of which saturates	0.04g	1.9g
Carbohydrate	1.5g	72.6g
of which sugars	0.1g	2.5g
Fibre	0.1g	2.9g
Protein	0.2g	10g
Salt	0.03g	1.7g

Best before:

20 OCT 2023

100g (3.5oz) e

5

060198

680427

>



A coarse cut blend of pork, wild boar, and chicken liver.

Ingredients: Pork Jowl (47%), Wild Boar Meat (21%) Chicken Liver (20%), **Milk, Eggs, Salt, Cognac (0.8%), Spices, Natural Flavourings.**

Allergy advice: For allergens, see ingredients in **bold**.

Nutritional information per 100g

Typical Values	Per 100g
Energy	1249 kJ 302 kcal
Fat	27g
of which saturates	9.8g
Carbohydrate	0.7g
of which sugars	<0.5g
Protein	14g
Salt	1.8g

FR
87.001.001
CE

Net weight **180g**

Nutritional Information:

Spicy Tomato & Sticky Onion Chutney

Typical Values	Per 100g
Energy	683kj/161kcal
Fats	0.3g
of which saturates	0g
Carbohydrate	38.4g
of which sugars	33.3g
Protein	1.4g
Salt	0.4g

Ingredients: Tomatoes (38%), Sugar, Bramley Apples, Malt Vinegar (From **Barley**), Onion (9%), Chillies, Spices, Salt, **Mustard**.

Allergy Advice: For Allergens, see ingredients in **Bold**.
No Added Colour or Preservatives.

Best Before End: See Base. Refrigerate once opened.



Scotch Shortbread

Wheat Flour (**Wheat** Flour, Calcium Carbonate, Iron, Nicotinamide, Vitamin B1), Margarine (Vegetable Oils (Palm, Rapeseed), Water, Salt (2.1%), Emulsifier: Polyglycerol Esters of Fatty Acids, Colours: Curcumin, Annatto, Flavouring), Sugar, 100% Rice Flour, Vanilla Flavouring (Water, Propylene Glycol, Caramel Sugar Syrup, Thickener: Xanthan Gum, Acidity Regulator: Citric Acid, Preservative: Potassium Sorbate), Salt.

Not suitable for **Nut** allergy sufferers due to manufacturing methods, May also contain traces of **Egg, Milk, Mustard, Oat, Sesame & Soya**. Suitable for Vegetarians.

Nutritional Information Typical values per 100g

Energy Kcal	Energy Kj	Protein (g)	Total Fat (g)	of which Saturates	Total Carbohydrate	of which Sugars	Dietary Fibre (g)	Salt (g)
457	1912	5.3	22.9	7.9	59.8	18.8	1.6	0.22

For Allergens please see in **BOLD**



150g e

Store in a cool dry place. Once opened store in an airtight container and consume within 30 days.
Best before see base of box

www.abbeybiscuits.co.uk

CARTWRIGHT
ENGLAND
& BUTLER

THESE CRISPY WAFER ROLLS OOZING WITH A CREAMY COCOA CREAM FILLING ARE DELICIOUSLY IRRESISTIBLE. ENJOY!

CRISPY WAFER ROLLS
WITH COCOA CREAM FILLING

INGREDIENTS (EN)

Sugar, Palm Fat, **Wheat** Flour (Calcium, Iron, Niacin, Thiamin), Whey Powder (**Milk**), Skimmed **Milk** Powder, Low Fat Cocoa Powder (3.2%), Rapeseed Oil, Colour: Ammonia Caramel, Flavours, Salt.

For allergens, see ingredients in **bold**. May contain Eggs, Sesame Seeds, Peanuts, Nuts.

NUTRITIONAL (PER 100G)

Energy 2196kJ / 525kcal, Fat 28.0g, of which Saturates 12.0g, Carbohydrate 61.0g, of which Sugars 45.0g, Fibre 1.9g, Protein 5.5g, Salt 0.2g.

BEST BEFORE SEE BASE OF PACK.

KNUSPRIGE WAFFEL
MIT KAKAOCREMEFÜLLUNG

ZUTATEN (DE)

Zucker, Palmfett, **Weizen**mehl (Kalzium, Eisen, Niacin, Thiamin), Molkenpulver (**Milch**), Mager**milch**pulver, Entöltes Kakaopulver (3.2%), Rapsöl, Farbstoff: Ammoniak Karamell, Aromen, Salz.

Allergene Zutaten sind **fett gedruckt**. Kann Spuren von Eier, Sesam, Erdnüsse und Nüssen enthalten.

NÄHRWERTE (PRO 100G)

Brennwert 2196kJ / 525kcal, Fett 28.0g, Davon Gesättigte Fettsäuren 12.0g, Kohlenhydrate 61.0g, Davon Zucker 45.0g, Ballaststoffe 1.9g, Eiweiss 5.5g, Salz 0.2g.

Mindestens haltbar bis: Siehe Bodenaufdruck.

GAUFRETTE CROUSTILLANTE
FOURÉE À LA CRÈME DE CACAO

INGRÉDIENTS (FR)

Sucre, Graisse de Palme, Farine de **Blé** (Calcium, Fer, Niacine, Thiamine), Poudre de Lactosérum (**Lait**), **Lait** écrémé en Poudre, Maigre de Cacao en Poudre (3.2%), Huile de Colza, Colorant: Ammoniac Caramel, Arômes, Sel.

Pour les allergènes voir les ingrédients en **gras**.

Peut aussi contenir des traces de Œufs, Graines de Sésame, Cacahuètes et des Fruits à Coque.

NUTRITIONNELLES (POUR 100G)

Énergie 2196kJ / 525kcal, Graisses 28.0g, dont Saturés 12.0g, Glucides 61.0g, dont Sucres 45.0g, Fibres Alimentaires 1.9g, Protéines 5.5g, Sel 0.2g.

À consommer de préférence avant: voir emballage.

ONCE OPENED STORE IN A COOL, DRY PLACE, IN AN AIRTIGHT CONTAINER.

MADE IN POLAND FOR CARTWRIGHT & BUTLER
PO BOX 298 BEVERLEY HU17 6FG UK
CARTWRIGHT & BUTLER, JOYCE HOUSE, 21-23 HOLLES STREET,
DUBLIN 2, IRELAND

CARTWRIGHT & BUTLER® IS A REGISTERED TRADEMARK

cartwrightandbutler.co.uk

150g e

CROFT

FINE PORTS SINCE 1588

PORT

TRIPLE CROWN

Bottled by Quinta and Vineyard Bottlers - Vinhos SA.

Vila Nova de Gaia, Portugal

Product of Portugal

20% vol

75cl

Croft Triple Crown is one of the most established and respected Port brands with a loyal following among knowledgeable wine drinkers. Made from a selection of full bodied and ripe ports from the finest areas of the Douro Valley it is aged in seasoned oak vats in our cool, tranquil cellars in Oporto. Established in 1588, Croft has been renowned for ports of distinction for over three hundred years.

 15 UK Units	Enjoy Responsibly	
	UK Health Departments recommend:	
	Men	3-4 units a day
Women	2-3 units a day	
www.drinkaware.co.uk		

phites



port.com

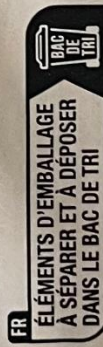
Assortiment van pralines - Ingrediënten: suiker, volle melkpoeder, cacaoassa, cacaooter, hazelnoten 6%, gesuikerde gecondenseerde volle melk, palmvet, glucoseroep, boterolie (melk), melksuiker, dextrose, alcohol, koffie-extract 0,04%, emulgator: sojalectine, stabilisator: E420ii, aroma's: karamel, framboos, sinaasappel en vanille. Chocolade: ten minste 50% cacaobestanddelen. Melkchocolade: ten minste 29% cacaobestanddelen. Witte chocolade: ten minste 23% cacaobestanddelen. Kan sporen van andere noten bevatten. Gefabriceerd in België. Assortiment de bonbons de chocolat - Ingrédients: sucre, lait entier en poudre, pâte de cacao, beurre de cacao, noisettes 6%, lait entier concentré sucré, graisse de palme, sirop de glucose, huile butyrique (lait), sucre de lait, dextrose, alcool, extrait de café 0,04%, émulsifiant: lécithine de soja, stabilisant: E420ii, arômes: caramel, framboise, orange et vanille. Cacao: 50% minimum (dans le chocolat). Cacao: 29% minimum (dans le chocolat blanc). Peut contenir des traces d'autres fruits à coque fabriqués en Belgique. Assorted chocolates - Ingredients: sugar, whole milk powder, cocoa mass, cocoa butter, hazelnuts 6%, sweetened condensed whole milk, palm fat, glucose syrup, butter oil (milk), milk sugar, dextrose, alcohol, coffee extract 0,04%, emulsifier: soy lecithin, stabilizer: E420ii, flavourings: caramel, raspberry, orange and vanilla. Cocoa solids: chocolate: min. 50%, milk chocolate: min. 29%, white chocolate: min. 23%. Milk solids: milk chocolate: min. 24%, white chocolate: min. 27%. May contain traces of other nuts. Made in Belgium. Imported by: Hamlet Chocolates UK Ltd., Shearway Business Park, Shearway Road, Folkestone CT19 4RH, United Kingdom. Vollmilchpulver - Zutaten: Zucker, Vollmilchpulver, Haselnüsse 6%, gezuckerte Kondensmilch, Palmfett, Glukosesirup, Butterfett (Milch), Milchsücker, Dextrose, Alkohol, Kaffee-Extrakt 0,04%, Emulgator: Sojalectine, Stabilisator: E420ii, Aromen: Karamel, Himbeere, Orange und Vanillearoma. Kakao: 50% mindestens im Schokoladenanteil. Kakao: 29% mindestens im Milchschokoladenanteil. Kakao: 23% mindestens im Anteil weiße Schokolade. Kann Spuren von anderen Schalenfrüchten enthalten. Hergestellt in Belgien. Surtido de bombones de chocolate - Ingredientes: azúcar, leche entera en polvo, pasta de cacao, manteca de cacao, avellanas 6%, leche entera condensada azucarada, grasa de palma, jarabe de glucosa, aceite de mantequilla (leche), azúcar de leche, cacao: 29% mínimo, chocolate blanco, cacao: 23% mínimo. Puede contener trazas de otros frutos de cascara. Producido en Bélgica. S blending av praliner - Ingredienser: socker, helmjölkspulver, kakaomassa, kakaostör, hasselnötter 6%, söttad kondenserad helmjölk, palmfett, glukossirap, smörolja (mjölk), mjölksocker, dextros, alkohol, kaffextrakt 0,04%, emulgeringsmedel: sojalectin, stabilisator: E420ii, aromer: karamell, hallon, apelsin och vanilj. Kakaohalt: choklad: min. 50%, mjölkchoklad: min. 29%, vit choklad: min. 23%. Kan innehålla spår av andra nötter. Tillverkad i Belgien. Bomboane din ciocolata asortate - Ingrediente: zahăr, lapte praf integral, masă de cacao, unt de cacao, alune 6%, lapte inducilit integral condensat, palm grăsimi, sirop de glucoză, unt ulei (lapte), zahăr din lapte, dextroză, alcool, extract de cafea 0,04%, emulgator: lecitina de soia, stabilizator: E420ii, arome: caramel, zmeura, porțocal și vanilie. Substanța uscată din cacao: în ciocolată minim 50%, în ciocolată cu lapte minim 29%, în ciocolată albă minim 23%. Poate conține urme de alte nuci. Produs în Belgia. Koelen droog bewaren. A conserver au sec et au frais. Keep cool and dry. Kühl und trocken lagern. Conserver en lugar fresco y seco. Förvaras svalt och torr. A se pastră la loc uscat și răcoros. Min. +5°C/41°F - Max. +20°C/68°F

Nettogewicht/Poids net/Net weight/Nettogewicht/

Peso neto/Nettovikt/Greutate netă

250 g e

Net Wt. 8.8 oz



Ten minste houdbaar tot/A consommer de préférence avant le/Best before/Mindestens haltbar bis/Consumir préférentiellemente antes del/Bäst före/A se consuma de preferința până la:

L22124 16/09/2023

Hamlet nv
Kerkstraat 77
BE-9120 Vrasene
Tel.: +32 3 750 99 50
119.02.1013V022022

5 400265 026152



Voedingswaarden/Waueurs nutritionnelles/Nutrition information/Durchschnittliche Nährwerte/Valores nutricionales/Namngsvärdena/Valorie nutritionale	100 g	25 g ±2 (*)
Energie/Energie/Energie/Valor energético/Energi/Valoare energetică	2200 kJ 526 kcal	550 kJ 132 kcal
Vetten/Matières grasses/Fat/Fett/Grasas/Fett/Grăsimi:	30 g	7,6 g
- waarvan verzadigde vetzuren/dont acides gras saturés/of which saturates/davon gesättigte Fettsäuren/de las cuales saturadas/varav mättat fett/din carne acizi grași saturați:	16 g	4,1 g
Koolhydraten/Glucides/Carbohydrate/Kohlenhydrate/Hidratos de carbono/Kohlydrat/Glucide:	56 g	14 g
- waarvan suikers/dont sucres/of which sugars/davon Zucker/de los cuales azucares/varav sockerarter/din care zahăruri:	54 g	13 g
Eiwitten/Protéines/Protein/Eiweiß/Proteinas/Protein/Proteine:	6,2 g	1,6 g
Zout/Sel/Salt/Salz/Sal/Salt/Sare:	0,16 g	0,04 g

10 portions de/10 partes de/servings of/Portionen à/porciones de/portioner av/portii de 25 g
20 (*) stuks/pieces/pièces/Stücke/piezas/styck/bucăți

IT - GRISSINI TIPO "0" CON CEREALI E OLIO EXTRA VERGINE D'OLIVA (3%). RICCHI DI FIBRE.
INGREDIENTI: Farina di grano tenero tipo "0", crusca di grano, farine di cereali (6%) (segale integrale, farro spelta integrale, orzo perlato, riso), olio extravergine di oliva (3%), fibra di acacia, sale, lievito, farina di grano maltato. Può contenere latte, semi di sesamo, soia e senape. Conservare il prodotto sigillato, in luogo fresco, asciutto e lontano da fonti di luce.

EN - MULTIGRAIN BREADSTICKS WITH EXTRA VIRGIN OLIVE OIL (3%). HIGH FIBRE.
INGREDIENTS: Unbleached wheat flour, wheat bran, cereals flour (6%) (wholemeal rye, wholemeal spelt wheat, pearl barley, rice), extra virgin olive oil (3%), acacia fibre, salt, yeast, malted wheat flour. Contains: cereals with gluten (wheat). May contain: milk, sesame seeds, soy and mustard. Keep the product sealed in a cool, dry place, away from light sources.

FR - GRESSINS AVEC CÉRÉALES ET HUILE D'OLIVE VIERGE EXTRA (3%). RICHE EN FIBRES.
INGRÉDIENTS: Farine de blé, son de blé, farines de céréales (6%) (seigle intégrale, blé d'épeautre intégrale, orge perlé, riz), huile d'olive extra vierge (3%), fibre d'acacia, sel, levure, farine de blé malté. Peut contenir du lait, graines de sésame, soja et moutarde. À conserver dans un endroit frais et sec et à l'abri de la lumière.

DE - GETREIDEN BROSTANGEN MIT NATIVEM OLIVENÖL EXTRA (3%). HOHER BALLASTSTOFFGEHALT.
ZUTATEN: Weizenmehl, Weizenkleie, (6%) Getreidemehlen (Vollkorn-Roggen, Vollkorn-Dinkelweizen, Perlen-Gerste, Reis), (3%) Natives Olivenöl extra, Akazienfaser, Salz, Hefe, gemalzter Weizenmehl. Kann Milch, Sesamsamen, Soja und Senf enthalten. Das Produkt gut verschlossen an einem kühlen und trockenen Ort lagern. Von Licht fernhalten.

PL - PALUSZKI WIELOZIARNISTEGO Z OLIWĄ Z OLIVEK EXTRA VERGIN (3%). WYSOKA ZAWARTOŚĆ BLONNIKA POKARMOWEGO.
SKŁADNIKI: Mąka pszenna, otręby pszenne, mąki ze zbóż (6%) (pełnoziarniste żyto, pełnoziarnisty pszenica orkisz, jęczmień perłowy, ryż), oliwa z oliwek extra vergin (3%) błonnik akacjowy, sól, woda, słodowana mąka pszenna. Może ona zawierać nasiona sezamu, mleko, soi i gorczyca. Przechowywać w suchym miejscu, szczególnie zamknięte, z dala od źródeł światła.

CS - TYČINKY VÍCEZRNĚ S EXTRA PANENSKÝM OLIVOVÝM OLEJEM (3%). S VYSOKÝM OBSAHEM VLÁKNINY. TRVANLIVÉ PEČIVO.
SLOŽENÍ: Pšeničná mouka, pšeničné otruby, obilné mouky (6%) (celozrnné žito, celozrnná pšenice špalda, perlový ječmen, rýže), extra panenský olivový olej (3%), akáciová vláknina, sůl, pekařské droždí, sladová pšeničná mouka. Může obsahovat mléko, sezamová semínka, sóju a hořčice. Výrobek skladujte uzavřený na chladném a suchém místě, chraňte před světlem.

NL - MEERGRANEN SOEPSTENGELS MET EXTRA VIERGE OLIJFOLIE (3%). VEZELRIJK.
INGREDIËNTEN: Tarwebloem, tarwezemelen, graanmelen (6%) (volkoren rogge, volkoren spelttarwe, parelgort, rijst), olijfolie extravierge (3%), acacia vezel, zout, gist, gemoute tarwebloem. Kan bevatten van melk, sesamzaden, soja en mosterd. Het product in een goed gesloten verpakking bewaren op een koele, droge en donkere plaats.

ES - PALITOS CON CEREALES Y ACEITE DE OLIVA VIRGEN EXTRA (3%). ALTO CONTENIDO DE FIBRA.
INGREDIENTES: Harina de trigo, salvado de trigo, harina de cereales (6%) (centeno integral, trigo espelta integral, cebada, arroz), aceite de oliva virgen extra (3%), fibra de acacia, sal, levadura, harina de trigo malleado. Puede contener leche, semillas de sésamo, soja y mostaza. Conservar el producto sellado, en un lugar fresco y seco, lejos de fuentes de luz.

HR - GRISINI S ŽITARICAMA S EKSTRA DJEVIČANSKIM MASLINOVIM ULJEM (3%). VISOKO OBOGAĆENA VLAKNIMA.
SASTOJCI: Pšenično brašno, pšenične mekinje, brašna od žitarica (6%) (integralni raženi, integralni pšenica pir, prekrupa od ječma, riža), ekstra djevičansko maslinovo ulje (3%), bagremova vlakna, sol, kvasac, pšenično sladno brašno. Može sadržavati sjemenke sezama, mlijeka, soju i gorušica. Proizvod čuvati na hladnom i suhom mjestu, daleko od izvora svjetlosti.

GR - ΚΡΙΤΣΙΝΙΑ ΔΗΜΗΤΡΙΑΚΑ ΠΟΛΥΣΠΟΡΑ ΕΞΤΡΑ ΠΑΡΘΕΝΟ ΕΛΑΙΟΛΑΔΟ (3%). ΥΨΗΛΗ ΠΕΡΙΕΚΤΙΚΟΤΗΤΑ ΣΕ ΕΛΑΘΙΜΕΣ ΙΝΕΣ.
ΣΥΣΤΑΤΙΚΑ: Αλεύρι σίτου, πίτουρο σιταριού, άλευρα δημητριακών (6%) (ολικής άλεσης σικάλης, ολικής σίτος σπέλτα, κριθάρι, ρύζι), έξτραπαρθένο ελαιόλαδο (3%), Ινώδ ακακίας, αλάτι, ζύμη, βύνης σίτου αλεύρι. Ενδέχεται να περιέχει γάλα, Σπόροι σησαμιού, σόγια και Σινάπι. Για να διατηρηθεί η φρεσκάδα του προϊόντος, να τοποθετείται σε ένα αεροστεγές δροσερό και ξηρό δοχείο, μακριά από κάθε φως.

PESO NETTO / NET WEIGHT : 125 g (4.4 oz)

EU

Valori nutrizionali medi per 100 g / Average nutritional value per 100 g / Valeurs nutritionnelles moyennes pour 100 g / Durchschnittliche Nährwerte für 100 g / Średnie wartości odżywcze w 100 g / Výživové údaje na 100 g / Gemiddelde voedingswaarden voor 100 g / Valores nutricionales medios por 100 g / Prosječna hranjiva vrijednost na 100 g / μέση θρεπτική αξία 100 γρ	
Energia / Energy / Énergie / Energiewert / Wartość energetyczna / Energetická hodnota / Energie / Valor energético / Energija / ενεργειακή αξία	1629 kJ / 386 kcal
Grassi / Fat / Matières grasses / Fett / Tłuszcz / Tuky / Vetten / Grasa / Masti / λιπαρά	5.1 g
di cui: acidi grassi saturi / of which: saturates / dont: acides gras saturés / davon: gesättigte Fettsäuren / w tym: kwasy tłuszczowe nasycone / z toho: nasycené mastné kyseliny / waarvan: verzadigde / de los cuales: ácidos grasos saturados / od kojih: zasićenih masnih kiselina / εκ των οποίων: κορεσμένα λιπαρά οξέα	0.9 g
Carboidrati / Carbohydrates / Glucides / Kohlenhydrate / Węglowodany / Sacharidy / Koolhydraten / Carbohidratos / Угљљикohидрати / υδατάνθρακες	68 g
di cui: zuccheri / of which: sugars / dont: sucres / davon: Zucker / w tym: cukier / z toho: cukry / waarvan: suikers / de los cuales: azucares / od kojih: šećeri / εκ των οποίων: σάκχαρα	2.2 g
Fibre / Fiber / Fibres / Faser / Błonnik / Vlákna / Vezels / Fibra / Vlakna / ίνες	10 g
Proteine / Protein / Protéines / Protein / Białko / Bilkoviny / Eiwitten / Proteína / Bjelančevine / πρωτεΐνη	12 g
Sale / Salt / Sel / Salz / Sól / Sól / Zout / Sal / Sol / Αλάτι	1.8 g



Unlock the Flavour

INGREDIENTS

Popped Corn (26%), Sugar, Glucose Syrup, Milk Chocolate (15%) (Sugar, Cocoa Butter, Whole **Milk** Powder, Cocoa Mass, Emulsifier: **Soya** Lecithin, Natural Vanilla Flavour) Shortbread Biscuit (13%) (Wheat Flour (**Gluten**), Sugar, Margarine, Cocoa Butter) Butter (**Milk**), Rapeseed Oil, Salt, Emulsifier: Sunflower Lecithin, Raising Agent: Bicarbonate of Soda.

For allergens please see ingredients in **bold**.

Suitable for Vegetarians.

Store in a cool, dry place. Once opened, re-seal bag to ensure freshness.

WARNING

May contain the occasional unpopped kernel.

Made in a facility that handles Milk, Soya, Nuts, Peanuts and Gluten.

So delicious it's hard to share!

Best before see base.

FAMILY OWNED



There's nothing CORN-Y about recycling

80g e

NUTRITIONAL INFORMATION

Typical Values per 100g

Energy	446kcal/1866KJ
Fat	16.3g
Of which saturates	8.7g
Carbohydrates	68.7g
Of which sugars	38.7g
Fibre	3.6g
Protein	4.1g
Salt	0.4g

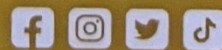
Established in a shed in Great Britain.

Have your butler send your message to:

Popcorn Shed Ltd, Shedquarters, 30 City Road, London, EC1Y 2AB

Popcorn Shed Ltd, Moat House, 54 Bloomfield Avenue, Belfast, Northern Ireland, BT5 5AD

Send us your very own #ShedSelfie to win popcorn @popcornshed





6 LUXURY MINCE PIES Only the finest ingredients have been carefully selected to create these aromatic mince pies. The delicious all butter pastry is packed with luxuriously rich mince, infused with 12 Year Old Glenfiddich® Single Malt Scotch Whisky. They have been created in the heart of Speyside by two of Scotland's finest family companies to a traditional recipe by the Walker family, who have been baking in the village of Aberlour since 1898.

The aromatic Single Malt Scotch Whisky comes from the Glenfiddich Distillery in the neighbouring village of Dufftown where they have been making fine Malt Whisky since 1887. The strong family traditions of both Walkers and Glenfiddich ensure that the craftsmanship and quality of ingredients remain unchanged and these mince pies are as good today as they have always been.

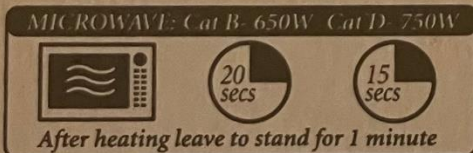
NUTRITION

Typical values /Valeurs moyennes/Typische Werte/Valores medios	Per 100g
Energy kJ /Energie/Brennwert/Valor energético	1680 kJ
Energy kcal	400 kcal
Fat /Lipides/Fett/Grasas	15.0 g
of which saturates /dont acides gras saturés/davon gesättigt/de las cuales saturadas	7.8 g
Carbohydrate /Glucides/Kohlenhydrate/Carbohidratos	61.7 g
of which sugars /dont sucres/davon Zucker/de los cuales azúcares	40.5 g
Fibre /Fibres/Ballaststoffe/Fibra	1.9 g
Protein /Protéines/Eiweiß/Proteínas	3.6 g
Salt /Sel/Salz/Sal	0.23 g

LUXURY MINCE PIES Ingredients: Fruit mince (47%) (sugar, apple purée, currants, sultanas, crystallised stem ginger (stem ginger, sugar), Glenfiddich whisky (3.5%), candied citrus peel (glucose-fructose syrup, orange peel, sugar, lemon peel, acidity regulator: citric acid), vegetable suet (palm oil, rice flour, sunflower oil), cornflour, mixed spice, acid: acetic acid; natural flavouring), **wheat flour** (wheat flour, calcium carbonate, iron, niacin, thiamin), butter (milk) (14%), sugar, salt. For allergens, including cereals containing gluten, see ingredients in **bold**. May also contain nuts and egg. Store in a cool dry place.

HEATING GUIDELINES

- Remove all packaging including foil containers.
- Enlever l'emballage y compris les recipients en aluminium.
- Entfernen Sie die gesamte Verpackung, einschließlich der Folienbehälter.
- Retire todo el material de embalaje, envases de aluminio inclusive.



- Care should be taken when eating this product after heating as the filling can be extremely hot.
- Attention, après réchauffage, la garniture peut être extrêmement chaude.
- Beachten Sie beim Verzehr dieses Produktes bitte, dass die Füllung nach dem Aufwärmen außerordentlich heiß sein kann.
- Debe tener cuidado al consumir este producto tras su calentamiento, ya que podría quemarse con el relleno.

TARTELETTES FOURRÉES AUX FRUITS SECS Ingrédients: Mélange de fruits secs et d'épices (47%) (sucre, purée de pommes, raisins de Corinthe, raisins de Smyrne, gingembre confit (gingembre, sucre), Glenfiddich whisky (3.5%), écorce d'agrumes confite (sirop de glucose, écorce d'orange, sucre, écorce de citron, régulateur d'acidité: acide citrique), graisse végétale (huile de palme, farine de riz, huile de tournesol), maizena, mélange d'épices, acide: acide acétique; arôme naturel), farine de **blé** (farine de **blé**, carbonate de calcium, fer, niacine, thiamine), beurre (**lait**) (14%), sucre, sel. Les allergènes, y compris les céréales qui contiennent du gluten, sont indiqués en **gras**. Présence éventuelle de fruits à coque et d'œufs. À conserver dans un endroit frais et sec. **PRODUIT D'ÉCOSSE.**

TÖRTCHEN MIT KANDIERTEN FRÜCHTEN Zutaten: Kandierete Früchte (47%) (Zucker, Apfelpüree, Korinthen, Sultaninen, kandierter Stengel-Ingwer (Stengel-Ingwer, Zucker), Glenfiddich Whisky (3.5%), Zitronat und Orangeat (Glucose-Fruktose-Sirup, Orangenschale, Zucker, Zitronenschale, Säureregulator: Zitronensäure), pflanzlicher Talg (Palmöl, Reismehl, Sonnenblumenöl), Maisstärke, Gewürzmischung, Säure: Essigsäure; natürliche Aromastoffe), **Weizenmehl** (**Weizenmehl**, Kalziumkarbonat, Eisen, Niacin, Thiamin), Butter (aus **Milch**) (14%), Zucker, Salz. Allergene, einschließlich glutenhaltiger Zerealien, siehe **fettgedruckte**. Kann auch Nüsse und Eier enthalten. Kühl und trocken lagern.

HERGESTELLT IN SCHOTTLAND. TARTALETAS DE FRUTAS PASAS Ingredientes: Picadillo de frutas pasas y especias (47%) (azúcar, puré de manzana, pasas de Corinto, pasas sultanas, jengibre confitado (jengibre en conserva, azúcar), Glenfiddich whisky (3.5%), cáscaras de cítricos confitadas (jarabe de glucosa-fructosa, cáscara de naranja, azúcar, cáscara de limón, corrector de la acidez: ácido cítrico), grasa vegetal (aceite de palma, harina de arroz, aceite de girasol), almidón de maíz, mezcla de especias, ácido: ácido acético; aromatizante natural), harina de **trigo** (harina de **trigo**, carbonato de calcio, hierro, niacina, tiamina), mantequilla (**leche**) (14%), azúcar, sal. Los alérgenos, incluidos los cereales con gluten, aparecen marcados en **negrita**. Puede también contener frutos secos de cáscara y huevos. Conservar en un lugar fresco y seco. **PRODUCTO DE ESCOCIA.**

BOTTEGA

FAMILY DISTILLERS
SINCE 1967

DISTILLED DRY GIN

WITH WATER FROM THE ALPS

N° 28915

PRODOTTO ED IMBOTTIGLIATO DA
PRODUCED AND BOTTLED BY

PRODUIT ET MIS EN BOUTEILLE PAR
BOTTEGA SPA - VICOLO ALDO BOTTEGA, 2
31010 GODEGA DI SANT'URBANO (TV) - ITALIA
IT00TVA00221P / Consumer Service ph. (39) 0438.406801

www.bottegaspa.com

PRODOTTO IN ITALIA - PRODUCT OF ITALY

100% ITALIAN BOTANICALS FROM:
JUNIPER _____ TUSCANY
SAGE _____ TRIVENETO
LEMON _____ SICILY



40% vol. 700ml e
Lotto: vedi bottiglia - Lot: see #



0 2 2 5 0 2 0 9 8 3 3 1 4



Miopasso 2021

NERO D'AVOLA SICILIA

DENOMINAZIONE DI ORIGINE CONTROLLATA

Miopasso è il nostro nuovo modo di intendere il Nero d'Avola. Abbiamo usato le più innovative tecniche di vinificazione che unite alla tradizione del Nero d'Avola hanno aggiunto intensità e fascino, con il risultato di un vino morbido e pieno, con gusto persistente, ricco ed elegante. Perfetto con arrosti e carne rossa, selvaggina e formaggi stagionati.

Miopasso is our new way of producing Nero d'Avola. We have used the most advanced winemaking techniques by using a percentage of dried grapes (appassimento) in the production of Miopasso, enhancing the traditional characteristics of the grape variety. This gives the wine deeper complexity and charm. Full, round and smooth with a rich and elegant palate, and a long exciting finish. Enjoy with roasts, red meats, game and mature cheese.

Imbottigliato da: C.F.M. e C. S.p.A. - VEROLANUOVA - ITALIA / THE WINE PEOPLE S.R.L. - TRENTO - ITALIA

LOTTO 15/31

PRODOTTO IN ITALIA



75 cl e
14% VOL



CONTAINS SULPHITES-CONTIENE SOLFITI-ENTHÄLT SULFITE-CONTIENT DES SULFITES-BEVAT SULFIETEN-INDEHOLDER SULFITTER-SUDETJE VINA SULFUR
INNEHÅLLER SULFIT-SISALDAB SULFITID-SATUR SULFITI-OBSAHUJE SIŘIČTANY-ΠΕΡΙΕΧΕΙ ΘΕΙΩΔΗ-FIG SULFITI-CONTIENE SULFITI-СІЛІЦЬНИЙ СУЛФІТ
TARTALMAZ SZULFITOK-ZAWIERA SIARCZYNY-CONTIENE SULFITOS-VSEBUJE SULFITI-CONTÉM SULFITOS-OBSAHUJE SIŘIČTANY-SISALTÁ SULFITEN

Buiteman A Family Bakery since 1958

(NL) Kaasbolletjes met gerijpte Goudse kaas
Ingrediënten: **tarwebloem (gluten)**, gerijpte Goudse kaas 29% (**melk**, aardappelzetmeel, zout, zuursel, stremsel, kleurstof: E160b(ii); beta-caroteen, conserveermiddel: E251), plantaardige oliën (raap, palm), **scharrelei**, bakkergist, **melkpoeder**, zout, suiker, emulgator: E471, gemodificeerd aardappelzetmeel, specerijen, gistextract, kleurstof: paprika extract, voedingszuur: citroenzuur, natuurlijk aroma. Kan sporen van **noten, sesam, selderij** en **soja** bevatten.

(UK) Cheese crumbles with matured Gouda
Ingredients: **wheat flour (gluten)**, matured Gouda cheese 29% (**milk**, potato starch, salt, starter culture, rennet, colour: E160b(ii); beta-carotene, preservative: E251), vegetable oils (rapeseed, palm), **barn egg**, yeast, **dried milk**, salt, sugar, emulsifier: E471, modified potato starch, spices, yeast extract, colour: paprika extract, acidity regulator: citric acid, natural flavouring. May contain traces of **nuts, sesame, celery** and **soya**.

(DE) Käsegebäck mit gereiftem Gouda • Zutaten: **Weizenmehl (Gluten)**, gereifter Goudakäse 29% (**Milch**, Kartoffelstärke, Salz, Säurewecker, Lab, Farbstoff: E160b(ii); Beta-Carotin, Konservierungsstoff: E251), pflanzliche Öle (Raps, Palme), **Eier aus Bodenhaltung**, Hefe, **Milchpulver**, Salz, Zucker, Emulgator: E471, modifizierte Kartoffelstärke, Gewürze, Hefeeextrakt, Farbstoff: Paprikaextrakt, Säuerungsmittel: Citronensäure, natürliches Aroma. Kann Spuren von **Schalenfrüchten, Sesamsamen, Sellerie** und **Soja** enthalten. Die Füllhöhe ist technisch bedingt.

(FR) Biscuits au Gouda affiné • Ingrédients: **farine de blé (gluten)**, fromage de Gouda affiné 29% (**lait**, amidon de pomme de terre, sel, acide lactique, préserveur, colorant: E160b(ii); bêta-carotène, produit conservateur: E251), huiles végétales (colza, palme), **œufs de poules élevées au sol**, levure, **lait en poudre**, sel, sucre, émulsifiant: E471, amidon de pomme de terre modifié, épices, extrait de levure, colorant: extrait de paprika, acidifiant: acide citrique, arôme naturel. Peut contenir des traces de **fruits à coque, sésame, céleri** et **soja**.

(SE) Lagrad Gouda ostkex • Ingredienser: **vetemjöl (gluten)**, lagrad Goudaost 29% (**mjölk**, potatisstärkelse, salt, mjölkkultur, löpe, färgämne: E160b(ii); beta-karoten, konserveringsmedel: E251), vegetabiliska oljor (raps, palm), **ägg från frigående höns inomhus**, jäst,

mjölkpulver, salt, socker, emulgeringsmedel: E471, modifierad potatisstärkelse, kryddor, jästextrakt, färgämne: paprikaextrakt, surhetsreglerande medel: citronsyra, naturlig arom. Kan innehålla spår av **notter, sesam, selleri** och **soja**.

(DK) Ostersnacks med modnet Gouda • Ingredienser: **hvedemel (gluten)**, modnet Gouda ost 29% (**mælk**, kartoffelstivelse, salt, starter kultur, osteløbe, farve: E160b(ii); beta carotene, konserveringsmiddel: E251), vegetabiliske olier (raps, palme), **skrabeæg**, gær, **mælkepulver**, salt, sukker, emulgator: E471, modificeret kartoffelstivelse, krydderier, gærekstrakt, farve: paprikaekstrakt, surhedsregulerende middel: citronsyre, naturlig aroma. Kan indeholde spor af **nødder, sesam, selleri** og **soja**.

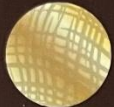
(NO) Kjekskuler med modnet Gouda • Ingredienser: **hvetemel (gluten)**, modnet Gouda ost 29% (**melk**, potetstivelse, salt, starterkultur, løype, farge (E160b(ii), betakaroten) konserveringsmiddel (E251)), vegetabilisk olje (raps, palme), **egg fra frittgående høner**, gjær, **melkepulver**, salt, sukker, emulgator (E471), modifisert potetstivelse, krydder, gjærekstrakt, farge (paprikaekstrakt), syrerregulator (sitronsyre), naturlig smak. Allergeninformasjon: se ingredienser i **fet** skrift. Kan inneholde spor av **notter, sesam, selleri** og **soya**.

(ES) Galletas con queso Gouda curado • Ingredientes: **harina de trigo (gluten)**, queso Gouda curado 29% (**leche**, almidón de patata, sal, cultivos de fermentación, cuajo, colorante: E160b(ii); beta-caroteno, conservante: E251), aceites vegetales (colza, palma), **huevos de gallinas criadas en el suelo**, levadura, **leche en polvo**, sal, azúcar, emulsionante: E471, almidón de patata modificado, especias, extracto de levadura, colorante: extracto de paprika, acidulante: ácido cítrico, aroma natural. Puede contener trazas de **frutos de cáscara, sésamo, apio** y **soja**.

(IT) Biscotti salati al Gouda stagionato • Ingredienti: **farina di frumento tipo '0' (glutine)**, formaggio Gouda stagionato 29% (**latte**, amido di patate, sale, fermenti lattici, caglio, colorante: E160b(ii); beta-carotene, conservante: E251), oli vegetali (colza, palma), **uova da allevamento a terra**, lievito, **latte in polvere**, sale, zucchero, emulsionante: E471, amido di patate modificato, spezie, estratto di lievito, colorante: estratto di paprica, acidificante: acido citrico, aromi naturali. Può contenere tracce di **nocci, sesamo, sedano** e **soia**.



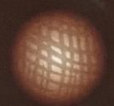
Questions or comments? Email
us at consumerservice@buiteman.com.



Milk Latte Crisp



Dark Espresso Neapolitan



Dark Coffee Cream



Milk Cappuccino Neapolitan



5 010972 004802 >



Widely Recycled

If you have any queries or comments regarding this product please contact our Quality Assurance Department. Telephone: +44 (0)1756 792531 E: sales@whitakerschocolates.com

YOUR STATUTORY RIGHTS ARE NOT AFFECTED

Whitakers Chocolates Ltd
85 Keighley Road, Skipton
North Yorkshire. BD23 2NA
www.whitakerschocolates.com

170g e

BEST BEFORE END DEC 2021 3952

GB: Coffee collection

Ingredients: Milk Chocolate 36% (sugar, cocoa butter, whole milk powder, cocoa mass, lactose (milk), whey powder (milk), emulsifier: soya lecithin), Dark Chocolate 33% (cocoa mass, sugar, cocoa butter, emulsifier: soya lecithin), Fondant 24% (sugar, glucose syrup, water), Sugar, Espresso Flavour, Cappuccino Flavour, Coffee Flavour, Colour: plain caramel, Stabiliser: invertase. Dark Chocolate contains: Cocoa solids 55% minimum. Milk Chocolate contains: Cocoa solids 32% minimum, Milk solids 14% minimum. **Allergy Advice:** For allergens, see ingredients in bold. Also, may contain nuts. **STORE IN A COOL DRY PLACE AWAY FROM DIRECT SUNLIGHT.**

FR: Collection café

Ingredients: Chocolat au lait 36% (sucre, beurre de cacao, lait entier en poudre, pâte de cacao, lactose (lait), poudre de lactosérum (lait), émulsifiant: lécithine de soja), chocolat noir 33% (pâte de cacao, sucre, beurre de cacao, émulsifiant: lécithine de soja), fondant 24% (sucre, sirop de glucose, eau), sucre, saveur espresso, saveur cappuccino, saveur café, colorant: caramel nature, stabilisateur: invertase. Le chocolat noir contient au moins 55% de cacao. Le Chocolat au Lait contient au minimum 32% de cacao et 14% de matière sèche de lait. **Conseils aux personnes allergiques:** Pour les allergènes, voir ingrédients marqués en caractères gras. Peut également contenir des fruits à coque. **A CONSERVER DANS UN ENDROIT FRAIS ET SEC, A L'ABRI DE LA LUMIERE DIRECTE.**

ES: Colección café

Ingredientes: chocolate con leche 36% [azúcar, manteca de cacao, leche entera en polvo, pasta de cacao, lactosa (leche), suero en polvo (leche), emulsionante: lecitina de soja], chocolate negro 33% [masa de cacao, azúcar, manteca de cacao, emulsionante: lecitina de soja], fondant 24% [azúcar, jarabe de glucosa, agua], azúcar, aroma de espresso, aroma de capuchino, aroma de café, color: caramelo natural, estabilizador: invertasa. El chocolate negro contiene un mínimo del 55% de cacao sólido. El chocolate con leche contiene un mínimo de 32% de sólidos de cacao y un mínimo de 14% de sólidos de leche. **Aviso de alérgenos:** para los alérgenos, ver los ingredientes en negrita. También puede contener frutos secos. **CONSERVAR EN UN LUGAR SECO Y FRESCO, ALEJADO DE LA LUZ SOLAR DIRECTA.**

DE: Kaffee-collection

Zutaten: Milchschokolade 36% (Zucker, Kakaobutter, Vollmilchpulver, Kakaomasse, Laktose (Milch), Molkepulver (Milch), Emulgator: Sojalecithin), Dunkle Schokolade 33% (Kakaomasse, Zucker, Kakaobutter, Emulgator: Sojalecithin), Fondant 24% (Zucker, Glukosesirup, Wasser), Zucker, Espresso-Aroma, Cappuccino-Aroma, Kaffee-Aroma, Farbstoff: einfache Zuckerkulär, Stabilisator: Invertase. Dunkle Schokolade enthält mind. 55% Kakaofeststoffe. Milchschokolade enthält mind. 32% Kakaorockenmasse und mind. 14% Milchrockenmasse. **Allergiehinweis:** Für Allergene siehe fettgedruckte Zutaten. Kann auch Nüsse enthalten. **WARMEGESCHÜTZT UND TROCKEN LAGERN. VOR DIREKTEM SONNENLICHT SCHÜTZEN.**

DK: Kaffekollektion

Ingredienser: Mælkeschokolade 36% (sukker, kakaosmør, sødmælkspulver, kakaomasse, laktose (mælk), vallepulver (mælk), emulgator: Sojalecithin), mørk chokolade 33% (kakaomasse, sukker, kakaosmør, emulgator: Sojalecithin), fondant 24% (sukker, glukosesirup, vand), sukker, espressoaroma, cappuccinoaroma, kaffearoma, farve: Almindelig karamel, stabilisator: Invertase. Mørk chokolade indeholder minimum 55% kakaoesterstof. Mælkeschokolade indeholder kakaosterstof på minimum 32%, mælkeesterstof på minimum 14%. **Allergi:** Angivende allergener henvises til ingredienserne med fed skrift. Kan også indeholde nødder. **OPBEVARES TØRT OG KØLT OG IKKE I DIREKTE SOLLYS.**

Nutrition Information / Valor nutricional / Næringsværdi / Valeurs nutritionnelles / Nährwertangaben

Typical values / Valores típicos / Typiske værdier / Valeurs typiques / Typische Werte	Per / por / pro / por / pro 100g	Per / por / pro / por / pro 2 chocolates / chokolades / chocolats / schokolade
Energy / Energía / Energi / Energie / Brennwert	1965kJ/469kcal	255kJ/61kcal
Fat / Grasas / Fedt / Matières grasses / Fette	19.9g	2.6g
of which saturates / de las cuales saturadas / heraf mættede fedtsyrer / Dont acides gras saturés / davon gesättigt	12.1g	1.6g
Carbohydrate / Hidratos de carbono / Kulhydrat / Glucides / Kohlenhydrate	65.3g	8.5g
of which sugars / de los cuales azúcares / heraf sukkerarter / Dont sucres / davon Zucker	64.8g	8.4g
Fibre / Fibra / Fibras / Ballaststoffe	4.2g	0.5g
Protein / Proteína / Proteiner / Protéines / Eiweiß	5.1g	0.6g
Salt / Sal / Sale / Sel / Salz	0.05g	trace

Contains 26 chocolates / Contiene 26 chocolates / Indeholder 26 chokolade / Contient 26 chocolats / Enthält 26 Schokolade



The Fairtrade cocoa may be mixed with non-certified cocoa, on a mass balance basis. Visit info.fairtrade.net/sourcing

PROSECCO

Denominazione di Origine Controllata

TREVISO

BRUT



Prodotto da LA GIOIOSA SPA
CROCETTA DEL MONTELLO (TV) - ITALIA

75cl e PRODOTTO IN ITALIA 11%vol



CONTIENE SOLFITI - CONTIENS SULFITES - ENHÄLT SVLFTE - CONTIENE SOLFITE
BEVE RESPONSABILI MENTE - DRINK RESPONSIBLY


CHAMPAGNE
Lanson
1760

CHAMPAGNE
LE BLACK LABEL
BRUT

Contient des sulfites
Contains sulphites
Enthält Sulfite

Indeholder sulfitter
Sisältää sulfiitteja
Innehåller sulfiter

Contiene solfiti
Contiene sulfitos
Περιέχει θειώδη

Blend :
Number of Crus : 100
Grand & Premier Crus : 50%

Pinot Noir : 50%
Chardonnay : 35%
Pinot Meunier : 15%

Ageing : 4 years

Dosage : 8g/l Brut

Harvest base : 2015 05/2020

: Disgorgement date

Reserve wines 30%

L0/S8180.03

: Traceability

10121 M Black Label
10 ml 12.5% vol.



Product of France - NM-232-001
LABORÉ PAR LANSON



0286