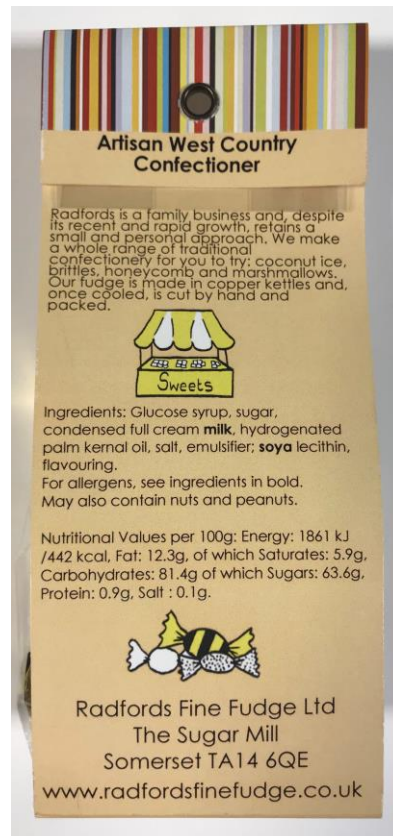


Sweet Treats

Chloe's – Golden Wreath Biscuits (150g)



Radfords – Clotted Cream Toffees (100g)



Walkers – Dessert Collection (120g)



DESSERT CHOCOLATE CLASSICS An Assortment of Milk, White and Dark Chocolates with Dessert flavour fillings

Ingredients: Milk Chocolate (20%) (Sugar, Cocoa Butter, Whole Milk Powder, Cocoa Mass, Emulsifier: Sunflower Lecithin, Flavouring), Dark Chocolate (7.5%) (Cocoa Mass, Sugar, Cocoa Butter, Emulsifier: Sunflower Lecithin, Flavouring), White Chocolate (7.5%) (Sugar, Cocoa Butter, Whole Milk Powder, Emulsifier: Soya Lecithin, Flavouring), Sugar, Glucose Syrup, Palm Oil, Whey Powder (Milk), Water, Condensed Milk, Invert Sugar Syrup, Cocoa Powder, Butter Oil (Milk), Gelling Agent: (Pectin), Glucose-Fruuctose Syrup, Emulsifier: Soya Lecithin, Flavouring, Salt, Citric Acid, Acidity Regulator: Sodium Citrate, Colourant: E163.

For Allergens: See ingredients in bold. May also contain Peanuts and Tree Nuts. Store in a Cool Dry Place.

Milk Chocolate Contains Cocoa Solids 30% Minimum. Milk Solids 14% Minimum. Dark Chocolate Contains Cocoa Solids 50% Minimum.

101 **Ingredienten:** Melkchocolade (20%) (Suiker, Cacaoboter, Volle Melkpoeder, Cacaomassa, Emulgator: Zonnebloem Lecithine, Smaktoestoffen), Pure Chocolade (7,5%) (Cacaomassa, Suiker, Cacaoboter, Emulgator: Zonnebloem Lecithine, Smaktoestoffen), Witte Chocolade (7,5%) (Suiker, Cacaoboter, Volle Melkpoeder, Emulgator: Soja Lecithine, Smaktoestoffen), Suiker, Glucosestroop, Palmolie, Welgedroogde Melk, Water, Gecondenseerde Melk, Invertsuikerstroop, Cacaopoeder, Boter (Melk), Geléerendstof: Pectine, Glucose-Fruuctosestroop, Emulgator: Soja Lecithine, Smaktoestoffen, Zout, Citroenzuur, Aarzelgellingmiddel: E331, Kleurstof: E163.

Voor allergenen: zie ingrediëntenlijst in het grijs. Het product kan ook nog bevatten: Pinda's, Noten. Op een koel, droge plaats bewaren.

102 **Ingredientes:** Chocolate De Leche (20%) (Azúcar, Manteca De Cacao, Leche Entera En Polvo, Masa De Cacao, Emulsificante: Lecitina De Girasol, Aromas), Chocolate Negro (7.5%) (Masa De Cacao, Azúcar, Manteca De Cacao, Emulsificante: Lecitina De Girasol, Aromas), Chocolate Blanco (7.5%) (Azúcar, Manteca De Cacao, Leche Entera En Polvo, Emulsificante: Lecitina De Soja, Aromas), Azúcar, Glucosa Líquida, Aceite De Palma, Suero De Leche En Polvo, Agua, Leche Condensada, Azúcar Invertido, Cacao En Polvo, Manteca (Leche), Gelificantes: Pectina, Glucosa-Fruictosa Líquido, Emulsificante: Lecitina De Soja, Aromas, Sal, Citrico Ácido, Corrector De Acidez: E331, Colorante: E163.

Para alérgenos: Véase los ingredientes en negrita. También puede contener Cacahuates, Nueces. Guardar en un lugar fresco y seco.

103 **Ingredientes:** Chocolat Au Lait (20%) (Sucre, Beurre De Cacao, Lait En Poudre Entier, Pâte De Cacao, Emulsifiant: Lécithine De Tournesol, Aromes), Chocolat Noir (7.5%) (Pâte De Cacao, Sucre, Beurre De Cacao, Emulsifiant: Lécithine De Tournesol, Aromes), Chocolat Blanc (7.5%) (Sucre, Beurre De Cacao, Lait En Poudre Entier, Emulsifiant: Lécithine De Soja, Aromes), Sucre, Sirop De Glucose, Huile De Palme, Poudre De Petit Lait, Eau, Lait Condensé, Sirop De Sucre Inverti, Poudre De Cacao, Beurre Lait, Gélifiant Pectine, Sirop De Glucose-Fruuctose, Emulsifiant: Lécithine De Soja, Aromes, Sel, Acide Citrique, Correcteur De Acidité: E331, Colorant: E163.

Pour les allergènes: voir les ingrédients en gras. Peut également contenir Arachides et Noix.

A conserver dans un endroit frais et sec.

104 **Produktbeschreibung:** Dessert sortert. Zutat: Milchchokolade (20%) (Zucker, Kakaoabutter, Vollmilchpulver, Kakaoeisse, Emulgator: Sonnenblumenlecithine, Aroma), Schokolade (7.5%) (Kakaomasse, Zucker, Kakaoabutter, Emulgator: Sonnenblumenlecithine, Aroma), Weiße Schokolade (7.5%) (Zucker, Kakaoabutter, Vollmilchpulver, Emulgator: Soja Lecithine, Aroma), Zucker, Glucosestroop, Palmöl, Süßholzwurzelpulver (MILCH), Wasser, Kondensmilch, Invertzuckerstroop, Kakaoabutter, Buttereisenblech (Milch), Geliermittel: Pektin, Glucose-Fruktosestroop, Emulgator: Soja Lecithine, Aroma, Salz, Säuerungsmittel: Citronensäure, Säureregulator: E331, Farbstoff: E163.

Allergien: 20% Mandelkerne (im Schokoladenanteil), Kakao: 50% Mandelkerne, Milchzucker: 14% Mandelkerne (im Milchschokoladenanteil). Hinweis für Allergiker: Siehe fettgedruckte Zutaten. Kann Spuren enthalten von Schalenfrüchten (Nüsse) und Erdnüssen.

105 **Ingredientes:** Chocolate De Lait (20%) (Azúcar, Manteca De Cacao, Leche Entera En Po, Pasta De Cacao, Emulsione: Lecitina De Girasol, Aromas), Chocolate Negro (7.5%) (Masa De Cacao, Azúcar, Manteca De Cacao, Emulsione: Lecitina De Girasol, Aromas), Chocolate Blanco (7.5%) (Azúcar, Manteca De Cacao, Leche Entera En Po, Emulsione: Lecitina De Soja, Aromas), Azúcar, Xarope De Glucose, Siro De Palma, Suero En Polvo, Agua, Leche Condensada, Xarope De Azúcar Invertido, Polvo De Cacao, Manteca (Leche), Gelificante: Pectina, Xarope De Glucose-Fructosa, Emulsificante: Lecitina De Soja, Aromas, Sal, Acido Citrico, Regulador De Acidez: E331, Colorante: E163.

Para Alérgenos: Véase los ingredientes en negrito. También puede contener Almonds, Noces.

Conservar en un lugar frío e seco.

106 **Ingredienten:** cioccolato al latte (20%) (zucchero, burro di cacao, latte intero in polvere, massa di cacao, emulsionante: lecitina di girasole, aromi), cioccolato fondente (7.5%) (massa di cacao, zucchero, burro di cacao, emulsionante: lecitina di girasole, aromi), cioccolato bianco (7.5%) (zucchero, burro di cacao, latte intero in polvere, emulsionante: lecitina di soia, aromi), zucchero, sciroppo di glucosio, olio di palma, polvere di siero di latte, acqua, latte condensato, sciroppo di zucchero invertito, cacao in polvere, burro chiarificato (burro), gelificante: pectina, sciroppo di glucosio-fruttosio, emulsionante: lecitina di soia, aromi, sale, acido citrico, regolatore di acidità: citrato di sodio, colorante: arancio.

Allergeni: vedi ingredienti in grassetto. Può inoltre contenere arachidi e frutta a guscio.

Conservare in luogo fresco e asciutto. Da consumarsi preferibilmente entro la data di scadenza.

107 **Ingredientes:** chocolate al leite (20%) (açúcar, manteiga de cacau, leite inteiro em po, pasta de cacau, emulsão: lecitina de girasol, aromas), chocolate negro (7.5%) (massa de cacau, açúcar, manteiga de cacau, emulsão: lecitina de girasol, aromas), chocolate branco (7.5%) (açúcar, manteiga de cacau, leite inteiro em po, emulsão: lecitina de soja, aromas), açúcar, xarope de glicose, xarope de palma, soro em pó, água, leite condensado, xarope de açúcar invertido, pó de cacau, manteiga (leite), gelificante: pectina, xarope de glicose-frutose, emulsificante: lecitina de soja, aromas, sal, ácido cítrico, regulador de acidez: E331, corante: E163.

Para Alérgenos: Veja os ingredientes em negrito. Também pode conter Amendoins, Nozes.

Conservar em um lugar frio e seco.

108 **Ingredientes:** Milk Chocolate (20%) (Sugar, Cocoa Butter, Whole Milk Powder (Cow's Milk), Cocoa Mass, Emulsifier: Sunflower Lecithin, Flavouring), Dark Chocolate (7.5%) (Cocoa Mass, Sugar, Cocoa Butter, Emulsifier: Sunflower Lecithin, Flavouring), White Chocolate (7.5%) (Sugar, Cocoa Butter, Whole Milk Powder (Cow's Milk), Emulsifier: Soya Lecithin, Flavouring), Sugar, Glucose Syrup, Vegetable Fat (Palm Fruit, Whey Powder (Cow's Milk), Water, Condensed Milk (Cow's Milk), Invert Sugar Syrup, Cocoa Powder, Butter (Cow's Milk), Gelling Agent: (Pectin), Glucose-Fruuctose Syrup, Emulsifier: Soya Lecithin, Flavouring, Salt, Citric Acid, Acidity Regulator: Sodium Citrate, Colourant: Anthocyanin.

Contains Cow's Milk and Soya.
May contain Peanuts and Tree Nuts.

STORE IN A COOL DRY PLACE.

For Best Before See side of Pack.
Made in the UK by Walkers Chocolates, Coventry Road, Birmingham. B25 8HE.

120 g

Nutrition Information for South Africa only		
TYPICAL NUTRITIONAL INFORMATION AS PACKED		
Serving Size: 40 g		
	Per 100g	Per 40g Serving
Energy (kJ)	2031	812
Protein (g)	3.6	1.4
Digestible Carbohydrate (g)	65	26
of which total sugar (g)	58.0	23.2
Total Fat (g)	23.1	9.2
of which saturated fat (g)	13.1	5.3
Dietary Fibre (g)	0.9	0.4
Total Sodium (mg)	90	36

†AOAC 991.43

Nutrition/Valori Nutritivi	
Durchschnittliche Nährwerte pro 100 g	
Energy/Energie/Valor energético/Enegie	2031 kJ / 485 kcal
Fat/Vetten/Macros grasso/Oleoso/Lipido/Grease	23.1 g
of which saturates/Waars verzadigd/lipide/geltinge Fettwaars/cont de gras verzadigd/los gras waars, saturados/los gras waars gordes saturados/los acid gras satur.	13.1 g
Carbohydrate/Koolhydraat/Kohlenhydrate/Glucose/Fruictosa de Carbono/Carbón	65.2 g
of which Sugars/Waars suiker/waars: Zucker/art: sucrose/los coles azúcares/los gras azúcar/los osucrose.	58.0 g
Protein/Eiweien/Eiweiß/Proteins/Proteins	3.6 g
Salt/Zout/Sau/Sel/Sala	0.2 g

5 011555 041061 >

Copperpot – All Butter Fudge (150g)



ESTABLISHED 1875
COPPERPOT
CORNWALL

Butter Fudge.

INGREDIENTS: Sugar, Butter 18% (MILK), Sweetened Condensed MILK, Glucose Syrup, Golden Syrup, Emulsifier Soya Lecithin, Salt.

● Suitable for vegetarians.

ALLERGY ADVICE: For allergens, see ingredients in bold. Gluten-Free. May contain traces of nuts.

STORAGE INSTRUCTIONS: Store in a cool, dry place away from direct sunlight. Once opened, store in an airtight container.

NUTRITION	
Typical Values	per 100g
Energy kJ	192
kcal	458
Fat (g)	17.3
of which saturates (g)	11.1
Carbohydrate (g)	74.9
of which sugars (g)	68.4
Fibre (g)	1.1
Protein (g)	1.1
Salt (g)	0.30

Net Wt. 5.3oz
150g e

recyclemy.com UK ONLY

CARTON-CARD widely recycled

WRAP-PLASTIC check local recycling

Copperpot® is a registered trademark of County Confectionery Ltd, registered in many countries.

Produced in the UK by County Confectionery Ltd, St Ives, Cornwall, TR26 2JH, United Kingdom

Best Before: []

5 027675 513074

PK020586

STAS – Milk Chocolate Bar (90g)



Milk chocolate contains 34% cocoa solids minimum & 22% milk solids minimum

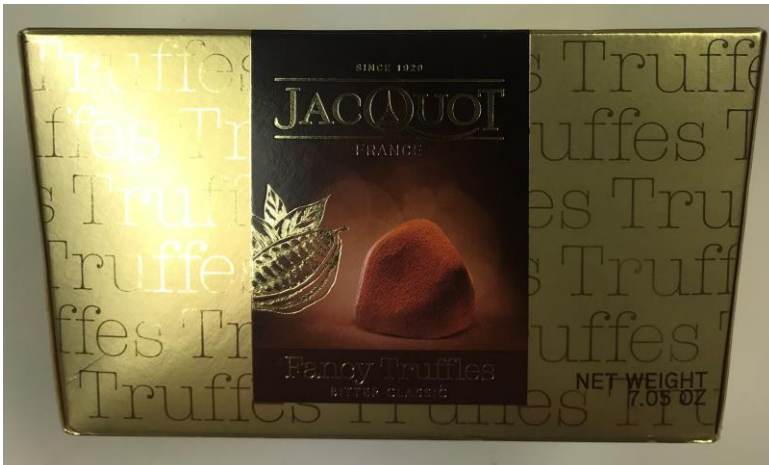
Ingredients: Sugar, Cocoa butter, Whole **milk** powder, Cocoa mass, Natural vanilla, Emulsifier: **Soya** lecithin, Colours E171, E172, E555.

For Allergens see ingredients in **Bold**. May also contain **Nuts**

Nutrition: Typical values	per 100g:
Energy	2355 KJ 562 Kcal
Fat	36.1 g
of which saturates	21.7 g
Carbohydrates	51.2 g
of which sugars	50.2 g
Protein	6.9 g
Salt	0.2 g

Store in a cool dry place away from direct sunlight
Made in UK, The Stas Partnership, Kent, DA18 4AA,
Tel: 020 8311 3747

Jacquot – Bitter Classic Truffles (200g)



EN - Fancy truffles - Ingredients: vegetable fats (palm kernel, palm), sugar, low fat cocoa powder (17%), **lactose**, emulsifier: sunflower lecithin, natural vanilla flavouring. May contain traces of **gluten** and **nuts**. Keep in a cool and dry place (18°C to 20°C). Imported by UNIVERSAL CANDY - Unit 8, 22 Beaumont Road, Mt Kuring-Gai NSW 2080, AUSTRALIA. Imported by DKSH New Zealand Limited - 97 Walkers Road, Longburn, Private Bag 11047 - Palmerston North 4442 - New Zealand. FR - Truffles fantaisie - Ingrédients: graisses végétales (palmiste, palme), sucre, cacao maigre en poudre (17%), **lactose**, émulsifiant: lecitine de tournesol, arôme naturel de vanille. Peut contenir des traces de **gluten** et de fruits à coque. A conserver à l'abri de l'humidité et de la chaleur (18°C à 20°C). PT - Trufas fantasia - Ingredientes: gorduras vegetais (palmiste, palma), açúcar, cacau magro em pó (17%), **lactose**, emulsionante: lecitina de girassol, aroma natural de baunilha. Pode conter traços de **gluten** e de **frutos de casca rija**. Conservar em local seco e fresco entre 18° e 20°C. FI - Tryffelifantasia - Ainekset: kasvisrasvat (palmu öljy, palmu), sokeri, vähärasvainen kaakaopulveri (17%), **laktoosi**, emulsiojia: tournesolinäköallesiini, luonnollinen vanilja-aromi. Voi sisältää jäämiä **gluteenista** ja pähkinöistä. Säilytettävä suojassa kosteudelta ja kuumuudelta (18° - 20°C).

SV - Fantastistryffel - Ingredienser: vegetabiliska matfetter (palmkärna, palm), socker, lågfetthaltigt kakaopulver (17%), **laktos**, emulgeringsmedel: solroslecitin, naturligt vaniljarom. Kan innehålla spår av **gluten** och **nötter**. Skyddas mot fukt och värme (18 - 20°C). Marknadsföres av: GSD AB Tel: +46 (0) 582 499990.

Net weight / Poids Net / Peso Líquido / Nettopaino / Nettovikt / Masa netta :
200 g - 7.05 OZ

Best Before
此日期前最佳
A consommer de préférence avant le / Consumir de preferència antes de / Parasta ennen / Bäst före-datum / Najlepiej spożyć przed:

Nutrition Information / Informations nutritionnelles / Informaciones nutricionales / Ravinto-ohje / Näringningsinformation / Informacja o wartości odżywczej	Typical values per / Valeurs moyennes pour / Valores medios por / Ravintoarvo per / Näringningsvärde per / Średnia wartość odżywcza w 100 g
Energy / Energie / Valor energética / Energia / Energi / Wartość energetyczna	2472 kJ / 595 kcal
Fat / Matières grasses / Lípidos / Rasva / Fett / Tuczysz / of which saturates / dont acides gras saturés / dos quals saturados / josta tyydyttyneistä / vaarav määttelä / w tym kwasy tłuszczowe nasycone	44 g
Carbohydrate / Glucides / Hidratos de Carbono / Hiilihydraatti / Kulhydrat / Węglowodory / of which sugars / dont sucres / dos quals açúcares / josta sokerista / vaarav sockerarter / w tym cukry	43 g
Protein / Protéines / Proteínas / Proteini / Protein / Białko	41 g
Salt / Sel / Sal / Suelta / Salt / Sol	3.9 g
	0.01 g

3 015496 414252