

ROAD ANGEL™

HALO PRO



USER GUIDE

PACKAGE CONTENTS



Halo Pro Front Camera



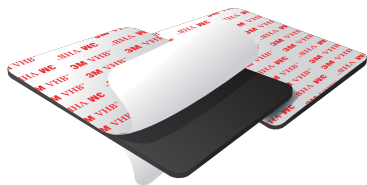
Halo Pro Power Cable



Halo Pro Rear Camera



Halo Pro Rear Camera Cable



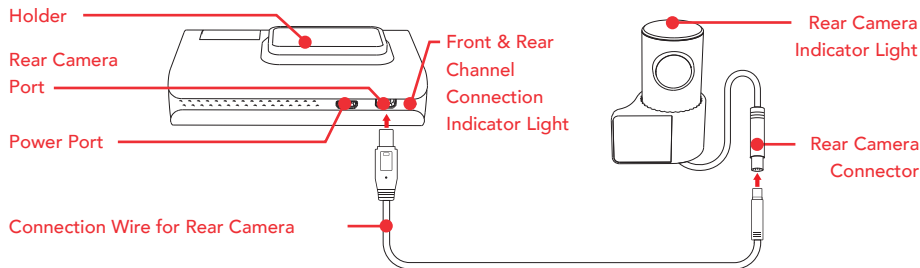
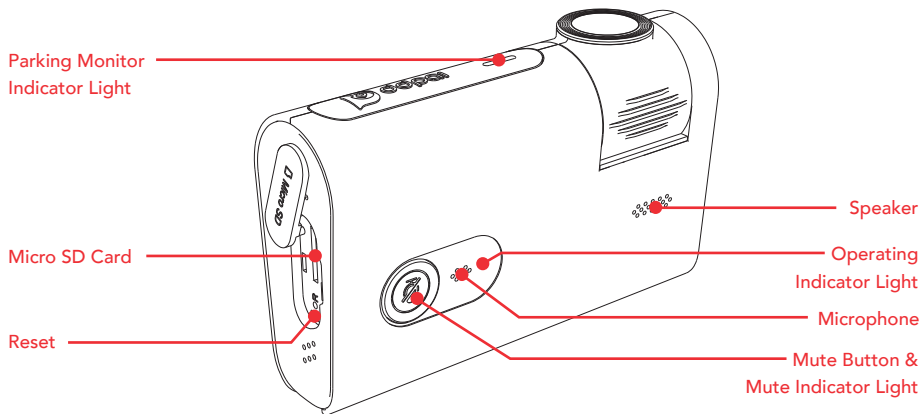
3M Sticky Pads



Instructions

HALO PRO

CONFIGERATION & BUTTON INSTRUCTION



HALO PRO

OPERATION INSTRUCTIONS

INDICATOR LIGHT STATUS INSTRUCTIONS

1. Parking Monitoring Indicator Light

Working: 1 Flash per second

2. Operating Indicator Light

- a) Working: 1 Flash per second
- b) TF Card Failure: Quick Flash
- c) Failure: Remains lit

3. Mute Indicator Light

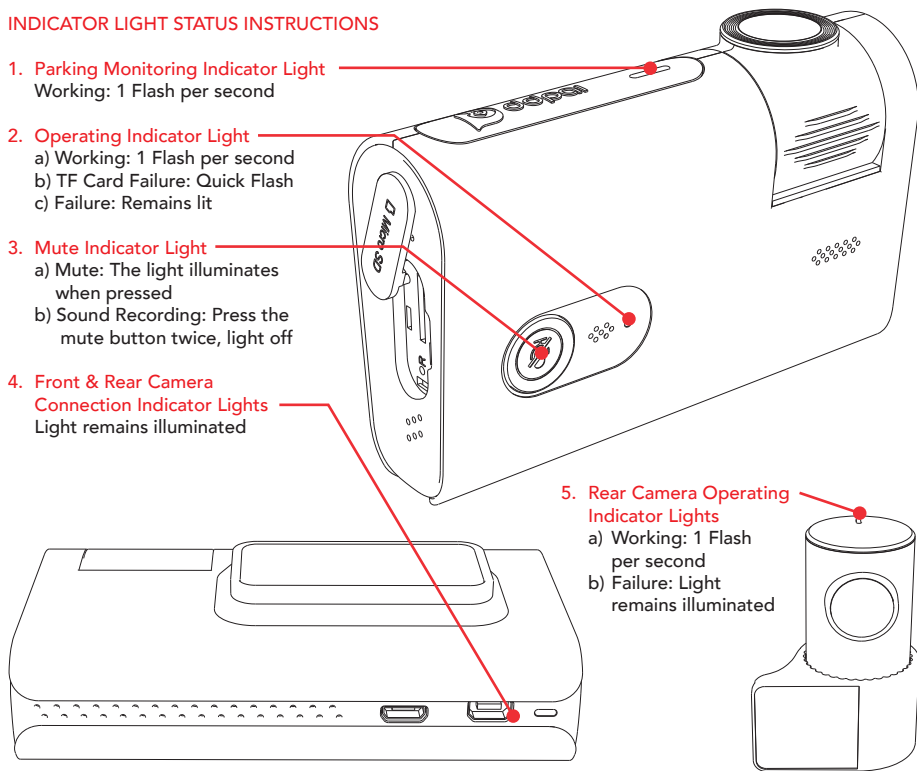
- a) Mute: The light illuminates when pressed
- b) Sound Recording: Press the mute button twice, light off

4. Front & Rear Camera Connection Indicator Lights

Light remains illuminated

5. Rear Camera Operating Indicator Lights

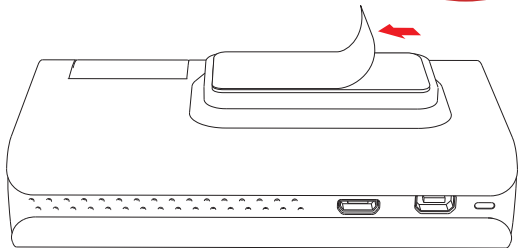
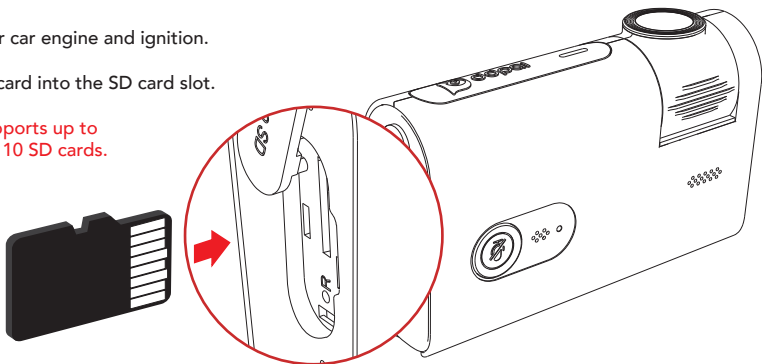
- a) Working: 1 Flash per second
- b) Failure: Light remains illuminated



GETTING STARTED ¹

1. Power off your car engine and ignition.
2. Insert the SD card into the SD card slot.

- Halo Pro supports up to 128Gb class 10 SD cards.



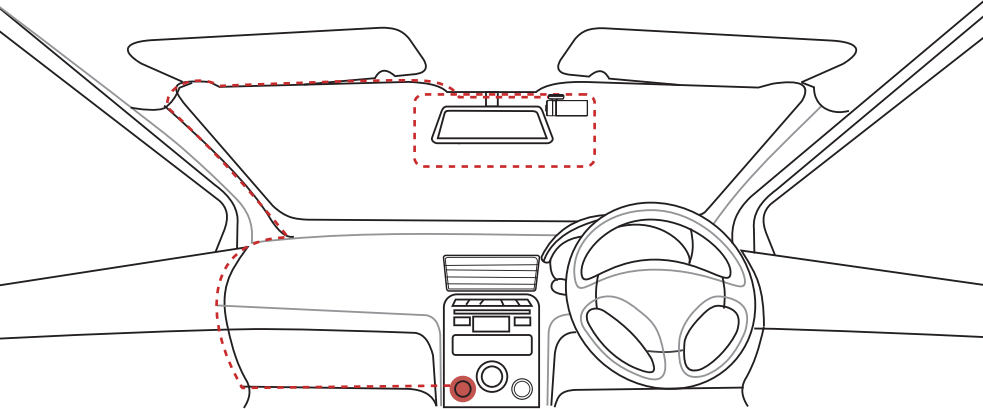
3. Mount the Halo Pro to your windscreen by peeling off the protective film from the 3M sticky pad and place behind the rear-view mirror.

Do not remove SD Cards when the Camera is on. The SD Card will need formatting with the device before first use.

Ensure the Halo Pro does not obstruct the view of the driver.

HALO PRO

GETTING STARTED ²



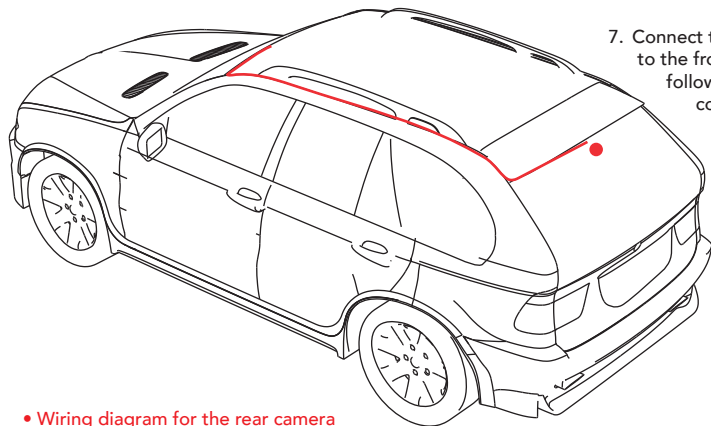
5. Plug the USB cable into the back of the power adapter and the micro USB into Halo Pro.
6. Follow the wire-running diagram on the next page to install the included rear camera link cable into your vehicle from the front camera to the position of the rear camera.

A constant/permanent power source is required for parking mode to operate correctly.

Hardwiring kits and accessories are available separately.



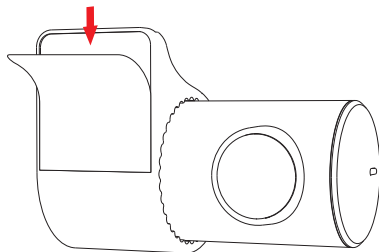
HALO PRO



7. Connect the rear camera link cable to the front and rear camera following the diagrams on the configuration and button instructions page.

• Wiring diagram for the rear camera

8. Mount the Halo Pro rear camera to your rear window by peeling off the protective film from the 3M sticky pad and place in a location that will not obstruct your view.
9. Turn on the car's ignition and check everything is working correctly. The Halo Pro will automatically boot up with a welcoming voice alert.



Both front and rear cameras should be installed inside the vehicle only.

APP INSTALLATION

Scan the QR Code to download the Road Angel App.



Download the Road Angel App from the Google Playstore or Apple Appstore using the above QR code. Alternatively navigate to your preferred Appstore and search for Road Angel Halo.



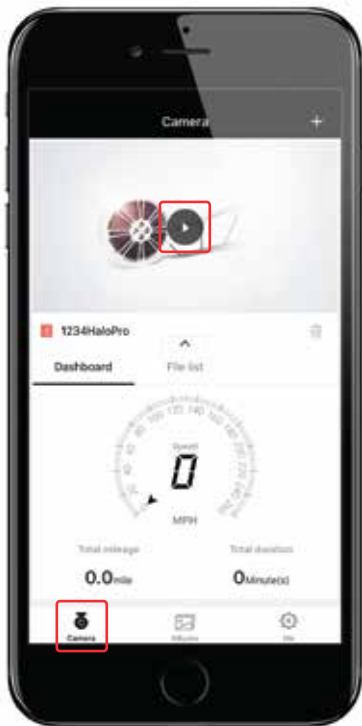
HALO PRO



Launch the App. Press the '+' icon in the top right corner. Then follow the instructions that will be shown in the App on how to connect the device via Wi-Fi. Once connected successfully you may return to the Halo App.

- The default Wi-Fi password is set to '1234567890'.

LIVE PREVIEW ¹



To preview the dash camera currently recording footage, select the 'Camera' tab at the bottom of the screen and press the play icon. This will display a real time view of the live dash camera footage.

Below the live footage preview is an area that will show you come basic GPS information relating to your speed and mileage; current MPH, 'Total mileage' and 'Total duration'.



At the top of the screen you will see the current live preview of the dash camera.

In the middle is the map of your current location. This will update as you drive.

At the bottom you will see 3 icons that allow you to download, take a photo or enter full screen. The download tab lets you download an image taken or download footage, this will take you to the download screen ready to create a clip.



Pressing the tab on the right of the map display will open the live data display.



You can switch back to the live map display at any time by pressing the tab on the left of the screen.

This shows data such as; 'Current speed', 'Average speed', 'Max speed', 'Current elevation', 'Compass/Direction' and 'Driving mileage'.



Enter the albums tab to view images, downloaded videos and events. Events are moments stored when the camera detects an impact from its G-Axis Sensors.

Select the image or video to view the file. Here you can save, delete or edit the file, saving the file saves it into your phone's media gallery outside of the app. If you wish to select multiple clips at once, you can do so by pressing and holding.

PHOTO EDITING ¹



After you have selected the photo from the Album page you have several options.

Top right button saves photos to the phone's photo album.
Bottom left magic wand opens the photo editing mode.
Middle trash can deletes the photo and bottom right allows you to share the photo.



The photo editing screen allows you to add text captions, video frames, contrast settings and choose from 17 photo filters.

When you are finished simply save your file.

VIDEO PLAYBACK ¹



To playback footage, slide the scroll bar which will show you a thumbnail of the moment about to be viewed along with the date and time.



You can rotate your phone to the side to enhance the experience. This also works for Live Preview, Photo Viewing, Video Viewing and Downloading Footage.

DOWNLOAD FOOTAGE ¹



When in the video playback mode, select the download icon on the right of the screen which will take you to the download screen.

To create a clip of what has been recorded, slide the viewing bar to the right to scroll backwards in time and to the left to go forwards. A thumbnail of what moment you are on with a date and time will be displayed to help select the right clip.

Press 'Start download', on the right of the thumbnail, the footage will begin playing showing you what is being saved.





When you are happy with the length of the clip, press 'Complete download'.

This will show you a thumbnail of the created clip, giving you the option to 'share' or 'delete' the clip. The clip stored in the app album tab and can be played back at your leisure or downloaded to your phone.



VIDEO EDITING 1



After you have selected a video from the Album page you have several options. The bottom controls change playback options. The top right buttons allow you to share the video and open the side menu.

From the side menu you can delete the video, 'Save' the video to your phones photo/video album or open the 'Video Editing' mode.





The video editing screen lets you crop the length of the selected video and choose video quality. Once done press the 'Next' button at the bottom to continue.



From the next video editing screen you can change the sound options for the video. You can toggle the sound on and off or you can choose from 7 music tracks.

When you are finished simply 'Save' your file.

GPS TELEMATICS ¹



To access the GPS/Telematics data press the Setting icon ('Me') in the bottom right to access the general settings of the dash camera.

At the top of the first settings page you will see most recent GPS/Telematics data from your last route.

This will show you some basic information about your most recent route. Including driving scores, start and finish locations and mileage.

Press this tab/panel to show more information.



After pressing the tab/panel for more information you will be presented with this page.

This page stores and shows more than just your most recent route with much more added information.

Clicking on different tabs will expand the details and show that route in map form.

Pressing a map will take you to the next page.

GPS TELEMATICS ³



After pressing the map information on the last page you will be presented with detailed information regarding the GPS/Telematics of that particular route.

Pressing the Play icon in the bottom right of the map will playback the route in map form with live data replay.

You can also press the top right button to save an image with all current information.

The information at the bottom of the page can be changed by swiping to the left.



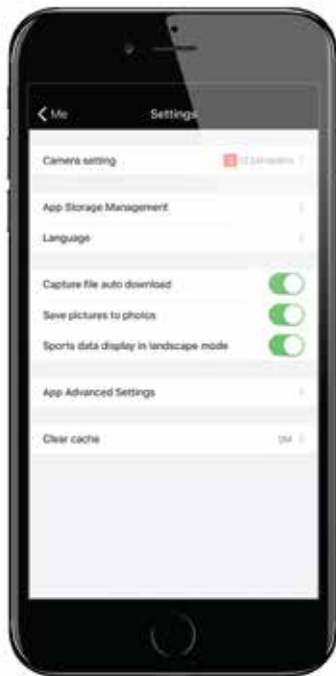
Swiping left on the data panels will cycle through the information that has been recorded.

The data types that are recorded represent information about driving score, speed (in graph form) over the entire route, elevation (in graph form), acceleration and brake performance (shown in speed/time format) and distance.



CAMERA SETTINGS

When connected to the camera, press the Settings icon ('Me') in the bottom right to access the general settings of the dash cam.



The Halo Pro's parking mode records video footage even when your vehicle is parked. The parking mode feature has several settings that can be changed. these will be different depending on the vehicles ignition state.



When the vehicles ignition is turned ON the 'Advanced Camera Settings' screen will show as above. Here you can toggle the Parking Mode (Park Guard) on/off. You can also adjust the Parking Mode G-Sensor sensitivity and set the threshold for the Parking Mode Low Battery Shutoff protection.



When the vehicles ignition is turned OFF the 'Advanced Camera Settings' screen will show as above. Here you can adjust the Parking Mode G-Sensor sensitivity, set what type of video format you want Parking Mode to be recorded in and set the duration of the Parking Mode recording time limit.

Parking Mode requires a Hardwiring Kit to function. These can be purchased separately.

FAQS

VIDEO RECORDING

Q1: Shall I keep the Halo Pro connected with my Smart phone when it is working?

A1: The Halo Pro starts to record video automatically when the car is started without needing to connect to your phone. However, if they are connected, you can preview, download and playback the videos from the Halo App on your Smart phone.

Q2: Why are some of the Halo Pro video recordings missing?

A2: Make sure the Halo App and the Halo Pro's firmware's are the latest version. If there is a 'Storage exception' notification, this means the SD card is corrupted and needs to be replaced.

Q3: Why is the image unclear on my Smart phone?

A3: The video downloaded to your Smart phone is compressed, you can review HD recordings via a PC in MP4 format.

WI-FI AND APP CONNECTIVITY

Q1: How do I change the Wi-Fi name and password of the Halo Pro?

A1: Make sure your Halo Pro is connected to the App. Then go to Me > Settings > Camera Settings > Camera Name (changes your Wi-Fi name), Camera Password (changes your Wi-Fi password).

Q2. Why is my Wi-Fi always disconnected?

A2: Go to Settings > Wi-Fi > Menu > Advanced > Disable 'Scanning always available'. If 'Scanning always available' is checked, make sure your Smart phone is near the Halo Pro.

Q3: After connection to the Halo Pro Wi-Fi, why can't my Android Smart phone access it's Mobile Data?

A3: Due to the settings of Android Smart phones, Mobile Data is no longer available when it's connected to the Wi-Fi of the Halo Pro.

SPECIFICATIONS & REFERENCES

MAIN HARDWARE

Recording	Front: 2K 1440P@25fps HD Loop Recording Rear: 720P@20fps HD Loop Recording
Lens	Front: 140° Viewing Angle - f/1.8 Aperture – 6 Layer Rear: 120° Viewing Angle - f/2.2 Aperture – 4 Layer
Image Sensor	Front: Omnivision OV4689 CMOS Image Sensor Rear: Omnivision OV9712 CMOS Image Sensor
Processor	Front: Hisilicon Hi3516D Processor Rear: Hisilicon Hi3518E Processor

TECHNICAL PARAMETERS

Storage	TF Card, up to 128Gb, Auto Loop
Video Resolution	Front: 1440P Rear: 720P
Image Resolution	4 Million Pixels
Connectivity	Wi-Fi 2.4GHz

- Apps and camera firmware continue to update.
- Store temperatures: -20°C - 70°C
- Foreign objects on the lens will seriously reduce image quality. Clean the lens using a soft non-static cloth. Do not clean using abrasive materials and/or chemicals.
- In the unlikely event of a problem with the device, repairs must be undertaken by a professional.
- Do not dispose of this item in household refuse, please use dedicated electrical recycling widely available.

FCC STATEMENT This device complies with Part 15 of the FCC Rules. Operation is subject to the following 2 conditions: (1) This device may not cause harmful interference, and (2) Must accept any interference received, Incl. interference that may cause undesired operation.

WARNING Changes or modifications not expressly approved by the party responsible for compliance could void the user's authority to operate the equipment.

NOTE This equipment has been tested and found to comply with the limits for a Class B digital device. These limits are designed to provide reasonable protection against harmful interference in a residential installation. This equipment generates uses and can radiate radio frequency energy and, if not installed and used in accordance with the instructions, may cause harmful interference to radio communications. However, there is no guarantee that interference will occur in a particular installation. If this equipment does cause harmful interference to radio or TV reception, which can be determined by turning the equipment off and on, the user is encouraged to try to correct the interference by one or more of the following measures: (1) Reorient or relocate the receiving antenna. (2) increase the separation between the equipment and receiver. (3) Connect the equipment into an outlet on a circuit different from that which the receiver is connected. (4) Consult the dealer or an experienced radio/TV technician for help.

Road Angel Group, DB House, Rani Drive, Nottingham NG5 1RF

roadangelgroup.co.uk

Copyright© 2019 Road Angel Group. All Rights Reserved

ROAD ANGEL™

PURE

SMART DRIVERS HAVE A

ROAD ANGEL™




THE SUNDAY TIMES



“ The Pure is a high quality, compact, well designed bit of kit with reliable data and powerful features. It's an excellent all-in-one driver aid for the speed-conscious. ”



For more info visit: RoadAngelGroup.com