

# The Night Before Christmas

Red Wine - Vina Vasta Tempranillo Syrah Merlot (12.5%) – 75cl



## Corkers – Sweet Thai Crisps (150g)



## Chloe's – Golden Wreath Biscuits (150g)





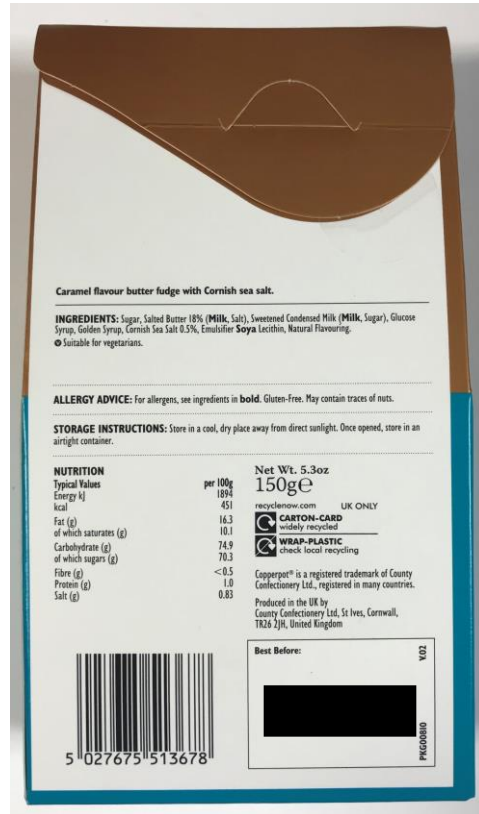
## Ooh! Chocolata – Very Gingery Dark Chocolate (50g)



## Vitavigor – Traditional Breadsticks (125g)



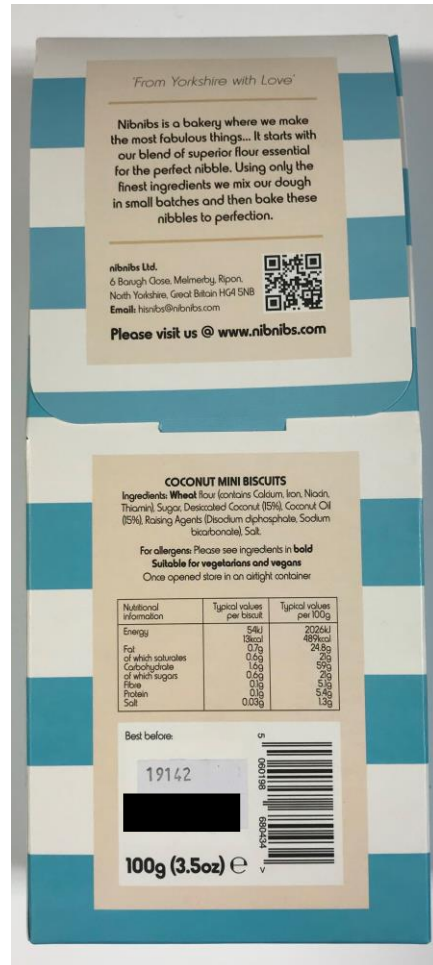
## Copperpot – Caramel & Sea Salt Fudge (150g)



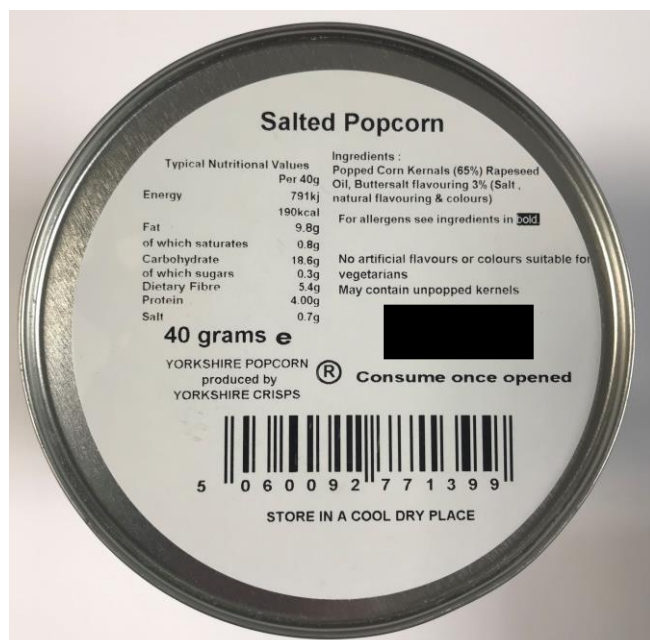
## STAS – Milk Chocolate Buttons (70g)



nibnibs – Coconut Mini Biscuits (100g)



Yorkshire Popcorn – Salted (40g)





## Baru – Swirly Hot Chocolate Powder (250g)



### INGREDIENTS

#### CHOCOLATE POWDER WITH CHOCOLATE FIGURINES

Sugar, cocoa powder, dark chocolate (10 %) (cocoa mass, sugar, cocoa butter, emulsifier: soya lecithin, natural flavour: vanilla). Dark chocolate contains cocoa solids 53 % minimum.

### NUTRITION INFORMATION

Servings per package: 12 (21 g)  
Approx. serving size: 21 g

	Avg Quantity per Serving	Avg Quantity per 100g
Energy	361 kJ / 86 kcal	1721 kJ / 408 kcal
Fat	1.9 g	9.2 g
- Of which Saturates	1.2 g	5.5 g
Carbohydrate	15 g	70 g
- Of which Sugars	14 g	68 g
Protein	1.3 g	6 g
Salt	0 g	0.01 g

### ALLERGENS

Contains soya.

Produced in a factory that also handles milk, nuts, gluten and peanuts.

## Hamlets – Mallows (150g)



### Food Value/100g

Energetic value in kJ	1418,00000
Energetic value in kcal	339,00000
Proteins (total g)	3,10000
Carbohydrates (total g)	79,00000
of which sugars (g)	69,00000
Fat (total g)	0,50000
of which saturated fat (g)	0,10000
of which mono-unsaturated fat (g)	0,10000
of which polyunsaturated fat (g)	0,10000
of which Trans fat (g)	0,10000
Fibers (g)	0,50000
Sodium (mg)	6,00000
Alcohol (ml)	0,00000
Alcohol (g)	0,00000
Cholesterol (mg)	0,00000

### List of ingredients

711.001

Ingredients and compound ingredients	%	Country of origin	Origin
glucose-fructose syrup	= 66,00	BE/FR	wheat
sugar	= 17,40	BE	sugar beet
water	= 9,40	BE	mains water
porcine gelatin	= 3,20	BE	pig skin
dextrose	= 3,00	BE	wheat
corn starch	= 1,00	SP/FR	maize
flavouring : vanilla flavour	= 0,03	DE	artificial

## STAS – Chocolate Bauble (60g)



### Milk Chocolate Bauble

Milk chocolate contains 34% cocoa solids minimum and 27% milk solids minimum. Ingredients: Sugar; cocoa butter, whole **milk** powder, cocoa mass, Emulsifier; **soya** lecithin Colours; E171, E172, E555, natural vanilla. For Allergens see ingredients in **bold**. May also contain **nuts**.

Net weight **60g**

Nutrition: Typical values per100g: Energy 2358KJ/563Kcal; Fat 36.2g of which saturates 21.8g; Carbohydrates 50.9g of which sugars 49.9g; Protein 7.0g; Salt 0.2g.

Store in a cool dry place away from direct sunlight  
Made in UK: Stas Chocolatier, Kent, DA18 4AA, Tel 020 8311 3747