

Holly Berry

Prosecco – Bollicina Prosecco Extra Dry (11%) – 75cl



Joe & Seph's – Mint Chocolate Popcorn (32g)



*If you don't love this popcorn...
...I'll eat my hats!*

Popcorn with Caramel, Belgian Chocolate & Mint

Ingredients
Corn, Sugar, Butter (*Milk*), Chocolate (25%) (Sugar, Whole *Milk* Powder, Cocoa Mass (31%), Cocoa Butter (14%), *Soya* Lecithin, Natural Vanilla), Corn Syrup, Mint Extract Powder (Peppermint Extract, Glucose Syrup, Peppermint Oil), Peppermint Oil, Cocoa solids 39.8% minimum, Milk solids 15.6% minimum.

Allergy information
For allergens see ingredients in **bold italic**. Made in an environment where nuts, peanuts and sesame seeds are present.

Storage instructions
Store in a cool, dry, dark place. Once open consume within 5 days.

Nutritional information		
Typical values per	100g	Serving
Energy	2003kJ 480kcal	320kJ 77kcal
Fat	28.3g	4.5g
of which saturates	17.4g	2.8g
Carbohydrate	59.6g	9.5g
of which sugars	38.2g	6.1g
Protein	4.3g	0.7g
Salt	0.7g	0.1g

Serving size = 16g

Careful!
May contain unpopped kernels.

No artificial flavours, colours or preservatives
Gluten free
Suitable for vegetarians

Discover over 40 other flavours at joeandsephs.co.uk
Find **joeandseph** on:
  

Joe's Gourmet Foods Ltd
PO Box 2406, WD18 1TH

32g
(two servings per pack)

Best before
See bag below

0 700621 159797

50455NAGK

Chloe's – Golden Wreath Biscuits (150g)



These all-butter biscuits are enrobed in Milk Chocolate and topped with golden sugar sprinkles

INGREDIENTS: MILK CHOCOLATE (25%): Sugar, Cocoa Mass, *Whole Milk Powder*, Cocoa Butter, Vegetable Fat, *Whole Powdered Milk*, Emulsifier, Sunflower Lecithin, **Whole Egg**, Sugar, **GOLDEN SPRINKLES** (10%): Sugar, Colours, Titanium Dioxide, **Butter** (8%), **Vanilla**, **Almond**, **Shells**, **BUTTER** (6%), **MAI**, **Whey Powder** (MAI), Flavour Agents, Sodium Bicarbonate, Aluminium Carbonate, Potassium Nitrate, **Whole Egg Powder**, Invert Sugar, Salt, Natural Flavour, Colouring, Curcumin.

For allergens, including cereals containing gluten, see ingredients in **bold italic**. May contain traces of Nuts, Peanuts, Barley and Soya.

Suitable for Vegetarians.

Store in a cool dry place away from strong light and odours. Once opened place in an airtight container.

Nutrition Information

	per 100g	per Biscuit (approx 12g)
Energy	1952kJ 465kcal	240kJ 57kcal
Fat	18.3g	2.3g
of which saturates	11.5g	1.4g
Carbohydrate	67.6g	8.3g
of which sugars	41.5g	5.1g
Protein	6.7g	0.8g
Salt	0.3g	0.04g

Approximately 12 servings per pack
Produced and packed in The Netherlands
Best before end. See side of box

Tray: Plastic - Not Currently Recycled
Wrap: Plastic - Not Currently Recycled
Carton: Card - Widely Recycled

Deck the halls with Golden Wreaths
Treat yourself to a sweet taste of the continent this festive season. Our festive all-butter biscuits are generously enrobed in milk chocolate then topped with gold sugar crystals for extra indulgence.

From Chloe's, with love
Chloe's brings you the best in continental biscuits and sweet treats to enjoy at home.

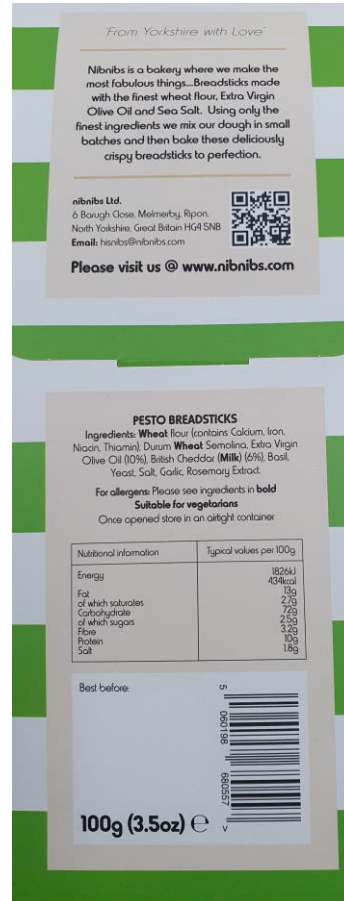
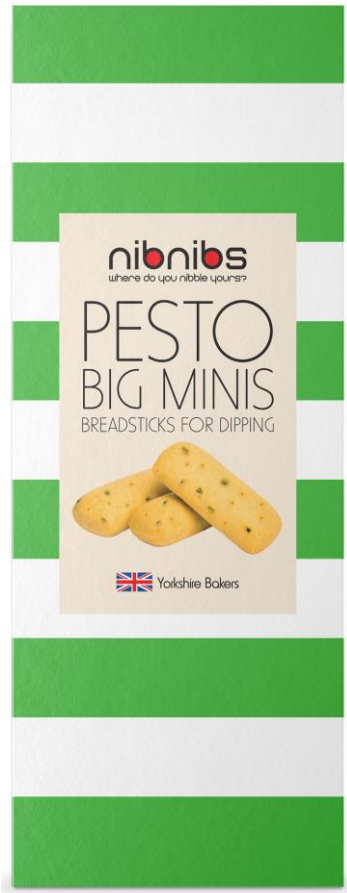
5 034083 004025

Chloe's, C/O Arden Fine Foods UK Ltd, 10 Banner Park, Wickmans Drive, Coventry, CV4 9XA

 @chloesuk1

150g e 

nibnibs – Pesto Big Minis (100g)



Minters Fine Foods – Christmas Pudding (227g)



Whitakers – Peppermint Creams (150g)



G81. Dark chocolate with peppermint flavoured fondant centres.
 Ingrédients: Fondant 63% (sugar, glucose syrup, water), Dark Chocolate 36% (cocoa mass, sugar, cocoa butter, emulsifier, soya lecithin), Peppermint Oil, Stabiliser, Invertase, Dark Chocolate contains cocoa solids 55% minimum.
Allergy Advice: For allergens, see ingredients in bold. Also may contain milk and nuts.
CONSERVATION: DRY PLACE AWAY FROM DIRECT SUNLIGHT.

F81. Chocolats noirs avec crème ondule menthe.
 Ingrédients: Fondant 63% (sucre, matière sèche de glucose, eau), Chocolat noir 36% (pâte de cacao, sucre, beurre de cacao, émulsifiant, lécithine de soja), essence menthe poivrée, stabilisant invertase. Le chocolat noir contient au moins 55% de cacao. **Constate sans cacao.** À conserver dans un endroit frais et sec. À l'abri de la lumière directe.

E5. Chocolate negro con relleno de crema de sabor a menta.
 Ingredientes: Fondant 63% (azúcar, sólidos de glucosa, agua), Chocolate negro 36% (masa de cacao, azúcar, manteca de cacao, de cacao sólido), Aves de almendra para los chocolates, estabilizante invertasa. El chocolate negro contiene mínimo 55% del cacao sólido. **Aviso de alérgenos:** para los chocolates, ver los ingredientes en negrilla. Puede contener también leche y frutos secos. **CONSERVAR EN UN LUGAR SECO Y FRESCO. ALEJADO DE LA LUZ SOLAR DIRECTA.**

D81. Zerkbitter Schokolade mit Füllung mit Pfefferminzgeschmack.
 Zutaten: Fondant 63% (Zucker, Glukosesirup, Wasser), Zerkbitterschokolade 36% (Kakaomasse, Zucker, Kakaobutter, Emulgator: Sojalecithin), Pfefferminzöl, Feuchthaltemittel Sorbitol, Invertase. Dunkle Schokolade enthält mind. 55% Kakaoanteil.
Allergiehinweis: Für Allergene siehe fettgedruckte Zutaten. Kann auch Milch und Nüsse enthalten.
WALDSCHEITEL UND ROCKEN KÄSSEN VOR DIREKTEM SONNENSCHUTZ!

D81. Marke chokolada med fondant med pepparmintsmak.
 Ingredienser: Pebermyntefondant 63% (sukker, tærret glukosesirup, vand), mørke chokolade 36% (kakaomasse, sukker, kakaosmør, emulgator: sojalecithin), pebermynteesens, stabilisator: invertase. Mørk chokolade indeholder minimum 55% kakaoester.
Allergi: Angående allergener henvises til ingredienserne med fed skrift. Kan også indeholde melk og nødder.
OPBEVARET TRODT OG SIKT OG SIKT DIREKTE SOLLYS!

Nutrition Information / Valor nutricional / Næringsværdi / Valeurs nutritives / Nährwertangaben

Typical values / Valores típicos / Typiske værdier / Valeurs typiques / Typische Werte	Per 100 g (per 100g)	Per / per / per / per / per 3 biscuits / chocolate / chocolade / schokolade / schokolade
Energy / Energía / Énergie / Énergie / Brennwert	1801 kJ (428 kcal)	13.1 (312 kcal)
Fat / Grasas / Fett / Matières grasses / Fette	12.4g	2.5g
of which saturates / de los cuales saturados / von denen gesättigt / dont les gras saturés / davon gesättigt	7.5g	1.5g
Carbohydrate / Hidratos de carbono / Kohlenhydrate / Glucides / Kohlenhydrate	73.4g	13.4g
of which sugars / de los cuales azúcares / von denen Zucker / dont les sucres / davon Zucker	67.7g	13.8g
Fibre / Fibra / Fibrer / Ballstoffer	2.0g	0.4g
Protein / Proteína / Protéines / Protéines / Eiweiß	2.4g	0.5g
Salt / Sal / Salz / Sel / Salz	0.2g	0.03g

Contains 13 chocolates / Contiene 13 chocolates / Inhalt 13 Schokolade / Contenu 13 des chocolats / Inhalt 13 Schokolade

150g e

Vegan
GAUEN FEE
FAIRTRADE

If you have any queries or comments regarding this product please contact our Quality Assurance Department. Telephone: +44 (0)1756 792531 Email: info@whitakerschocolates.com

Whitakers Chocolates Ltd
 85 Knightley Road, Sligoan
 North Yorkshire YO23 2NA.
www.whitakerschocolates.com

YOUR STATUTORY RIGHTS ARE NOT AFFECTED

Not for sale where it may be illegal on a resale basis. See our website for more information.

Elizabeth Shaw – Mint & Cocoa Biscuits (140g)



Elizabeth Shaw
 The origins of Elizabeth Shaw and the heritage of making quality chocolate date back to 1881 and our original After Dinner Mint Crisp.

MINT & COCOA
 CRISP BISCUIT WITH MINT FLAVOUR CARAMEL (32.3%)
 COCOA NIBS AND RICE CRISPS IN DARK CHOCOLATE.

Ingredients: dark chocolate 35.5% (sugar, cocoa mass, cocoa butter, butteroil (milk), emulsifiers: soya lecithin, polyglycerol polyricinoleate, vegetable fats: palm, shea, sili, mango, in varying proportions, flavoured), **wheat** flour, glucose syrup, sugar, rice crisps (8.5%) (rice flour, **wheat** flour, corn flour, sugar, **barley** malt extract, salt), palm fat, invert sugar syrup, cocoa nibs (4.3%), glucose-fructose syrup, apple puree, apple juice concentrate, humectant: sorbitol, starch, whey powder (milk), emulsifiers: soya lecithin, mono and diglycerides of fatty acids; salt, **barley** malt extract, raising agents: ammonium carbonate, sodium carbonate, diphosphates; flavourings.

Allergy Advice: For allergens, see ingredients in **bold**. Also, may contain peanuts, other nuts and egg. Suitable for vegetarians. Keep cool and dry.

Nutrition Information

Typical values	Per 100 g	Per biscuit
Energy	1917 kJ	297 kJ
	458 kcal	71 kcal
Fat	21.0 g	3.3 g
of which saturates	12.0 g	1.9 g
Carbohydrate	60.0 g	9.3 g
of which sugars	39.0 g	6.0 g
Fibre	3.8 g	0.6 g
Protein	4.0 g	0.6 g
Salt	0.34 g	0.05 g

Contains 9 biscuits

Guarantee: At Elizabeth Shaw we have a long-standing reputation for the quality of our products, which we value greatly. Therefore, if this product was damaged in any way when you received it, please return the complete package to us stating where and when you purchased it; we will replace it and refund your postage. This warranty applies within the UK only, it does not affect your statutory rights.

140 g e Net wt 4.9 oz

Elizabeth Shaw® is a registered trade mark of Elizabeth Shaw Ltd, registered in many countries. Made in the EU. Elizabeth Shaw Ltd, 1 Greenworth Court, Lime Kiln Close, Stone Gilford, Bredon BS24 6SR, UK. Tel: 0800 9880 880. www.elizabethshaw.co.uk © 2017 Elizabeth Shaw Ltd. Best before and

1881

5 1055037 1002966 >

Ooh! Chocolata – Very Minty Crisp Dark Chocolate Bar (50g)



Ingredients: Cocoa mass, sugar, cocoa butter, mint crisp (sugar, pure mint oil), emulsifier (**soya lecithin**), vanilla extract.

Dark chocolate contains minimum 60% cocoa solids.

! **Allergy advice:** For allergens, please see ingredients in **bold**. Also, may contain traces of milk, nuts, peanuts and gluten.

V **Suitable for Vegetarians**



Nutrition information	Typical values	per 100g	
	Energy Kj		2225 kj
	Kcal		552 kcal
	Fat		35g
	of which saturates		21.4g
	Carbohydrate		43.1g
	of which sugars		38.5g
	Protein		6.9g
	Fibre		9.8g
Salt		0.1g	

Ardens – Rosemary & Quinoa Nibble Sticks (55g)



ardens

NIBBLESTICKS

QUINOA & ROSEMARY

Breadsticks with Extra Virgin Olive Oil (15%), Quinoa and Rosemary

Ingredients: Wheat Flour, Extra Virgin Olive Oil (15%) (from Greece), Sour Dough (Wheat Flour, Water), Quinoa (8%), Rosemary (5%), Yeast, Salt.

Allergy Advice: For allergens, including cereals containing gluten, see ingredients in **bold**. May contain traces of Barley, Nuts & Sesame.

SUITABLE FOR VEGANS

Nutritional	Per 100g	Per Nibble Stick
Energy	1815kJ 432kcal	91kJ 22kcal
Fat	14.1g	0.7g
of which saturates	2.6g	0.1g
Carbohydrate	61.6g	3.1g
of which sugars	2.3g	0.1g
Protein	12.6g	0.6g
Salt	2.0g	0.1g

Serving size 5g (1 Nibblestick), 11 servings per pack.

55g

Storage Advice: Store in a cool dry place away from strong light and odours. Once opened, keep in an airtight container.

Brilliantly baked for Arden Fine Foods UK Ltd,
10 Banner Park, Coventry, CV4 9XA.

Nicest nibbled by (Best Before). See bag.

- BAG - PLASTIC** - Check Local Recycling
- SLEEVE - CARD** - Widely Recycled
- TAG - MIXED MATERIAL** - Not Currently Recycled

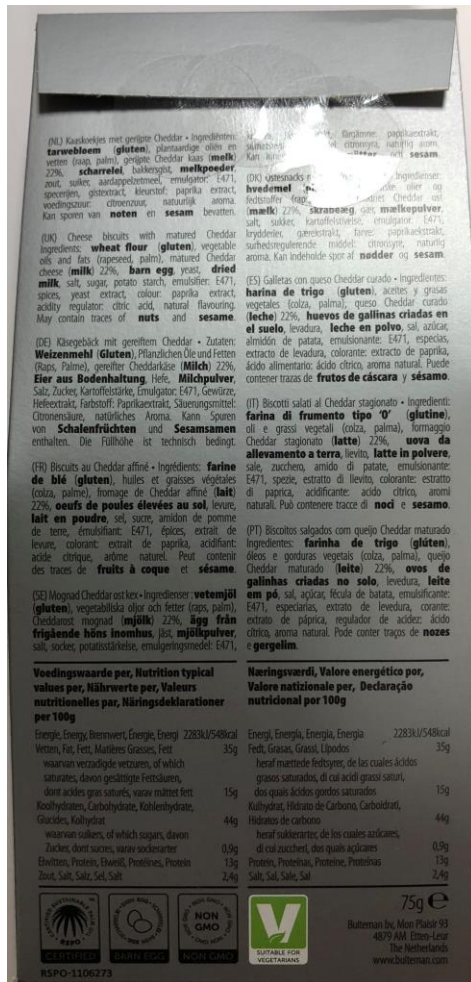
GET SOCIAL WITH OUR FOODIE FAMILY

@ardensuk |

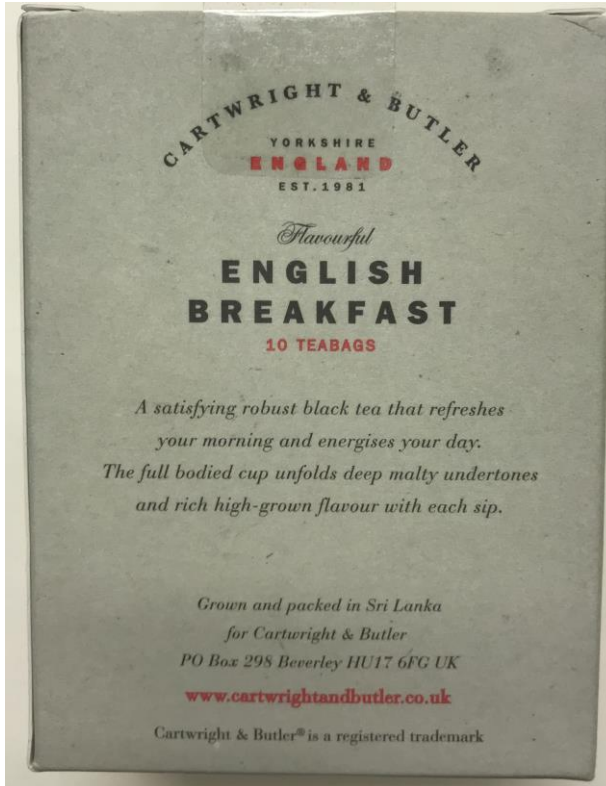
Grandma Wild's – 4 Luxury Mince Pies



Buiteman – Cheddar Biscuits (75g)



Cartwright & Butler – English Breakfast Tea 10 Teabags (30g)



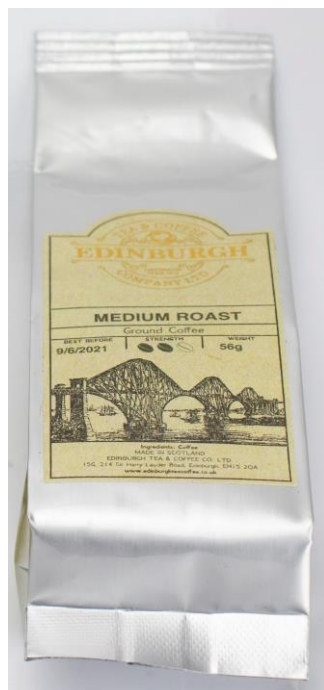
Savoursmiths – Desert Salt Crisps (150g)



Desert Salt Potato Crisps	
Typical Values/ Les Valeurs Typiques/ Typische Werte/ Typische Warden/ Valores Típicos/ Yalori Tipici/ Typiske Værdier/ Typiske Verdier/ Typiska Värden/ Tyypilliset Arvot/ Τυπικές Τιμές per 100g	
Energy/ Energie/ Energie/ Energie/ Energia/ Energi/ Energi/ Energi/ Energia/ Ενέργεια	2029kJ / 485kcal
Fat/ Graisse/ Fett/ Dik/ Grasa/ Grasso/ Fed/ Fett/ Fett/ Rasva/ Almog	26.5g
Saturates/ Saturés/ Sättigt/ Verzadigde Vetturen/ Saturados/ Saturi/ Mättade Fettsyror/ Mettet Fett/ Mättade Fettsyror/ Tydyttyneet Rasvahapot/ Κορεσμένα	2.8g
Carbohydrates/ Les Glucides/ Kohlenhydrate/ Koolhydraten/ Carbohidratos/ Carbolat/ Kulhydrater/ Karbohydrater/ Kolhydrater/ Hiilihydraatit/ Υδατάνθρακες	49g
Sugars/ Sucres/ Zucker/ Suikers/ Azúcares/ Zuccheri/ Sukker/ Sukker/ Søkerarter/ Σάκχαρα	0.8g
Fibre/ Fibre/ Faser/ Vezel/ Fibra/ Fibra/ Fiber/ Fiber/ Fiber/ Kuitu/ Iva	6.4g
Protein/ Protéine/ Eiweiß/ Eiwit/ Proteina/ Proteina/ Protein/ Protein/ Protein/ Προτεΐνη	6.7g
Salt/ Sel/ Salz/ Zout/ Sal/ Sale/ Salt/ Salt/ Salt/ Suola/ Αλάς	0.8g
Serving suggestion 30g, 146 kcal per 30g Serving.	

UK DESERT SALT POTATO CRISPS 150G Ingredients: Potatoes, Sunflower Oil, Desert Salt. For Allergens, see ingredients in bold. Packed in a protective atmosphere. Made in England. Store in a cool, dry place.
FR SEL DU DESERT CHIPS DE POMMES DE TERRE 150G Pommes de terre, huile de tournesol, sel du désert. Pour les allergènes, voir les ingrédients en gras. Produit conditionné sous atmosphère protectrice. Fabriqué en Angleterre. Conservez dans un endroit frais et sec. A conserver à l'abri de la chaleur et de l'humidité.
DE KARTOFFELCHIPS MIT WÜSTENSALZ 150G Zutaten: Kartoffeln, Sonnenblumenöl, Wüstensalz. Für Allergene siehe Zutaten in Fettdruck. Unter Schutzatmosphäre verpackt. Hergestellt in England. Kühl und trocken lagern.
NL AARDAPPELCHIPS MET WOESTIJNZOUT 150G Ingrediënten: Aardappelen, Zonnebloemolie, Woestijnzout. Voor allergenen, zie bij ingrediënten in het vet. Verpakt onder beschermende atmosfeer. Gemaakt in Engeland. Bewaren op een koele, droge plek.
ES PATATAS FRITAS CON SAL DEL DESIERTO 150G Ingredientes: Patatas, aceite de girasol, sal del desierto. Para los alérgenos, vea los ingredientes en negrita. Envasadas en atmósfera protectora. Elaboradas en Inglaterra. Guardar en lugar fresco y seco.
IT PATATE CON SALE DESERTICO 150G Ingredienti: Patate, Olio di semi di girasole, Sale deserto. Per gli allergeni, vedere gli ingredienti in grassetto. Confezionato in atmosfera protettiva. Prodotto in Inghilterra. Conservare in luogo fresco e asciutto.
DK KARTOFFELCHIPS MED ØRKENSALT 150G Ingredienser: Kartoffel, Solsikkeolie, Østersalt. For allergener, se ingredienser i fed skrift. Pakket i beskyttende atmosfære. Made in England. Opbevares på et koldt, tørt sted.

Edinburgh Tea & Coffee Company – Medium Roast Coffee (56g)



Ingredients: Coffee
 MADE IN SCOTLAND
 EDINBURGH TEA & COFFEE CO. LTD
 15G, 214 Sir Harry Lauder Road, Edinburgh, EH15 2QA
www.edinburghteacoffee.co.uk

Elizabeth Shaw – Dark Chocolate Mint Crisp (175g)

