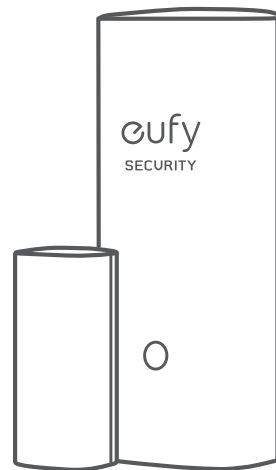




# Quick Start Guide

Entry Sensor



Anker Innovations Limited. All rights reserved. eufy and the eufy logo are trademarks of Anker Innovations Limited, registered in the United States and other countries. All other trademarks are the property of their respective owners.

51005002145 V02

# TABLE OF CONTENTS

For Entry Sensor Installation	<b>02</b>	<b>04</b>	Led
Battery Placement	<b>02</b>	<b>05</b>	Faq
Adding Entry Sensor to Your System	<b>03</b>	<b>05</b>	Safety
Mounting the Sensor	<b>03</b>	<b>08</b>	Customer Service

## FOR ENTRY SENSOR INSTALLATION



Entry Sensor (T8900)



Sensor Magnet



CR123A Battery

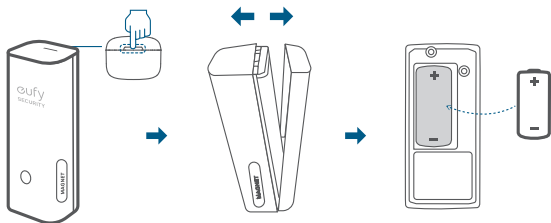


Mounting Screws

**Note:** 1. Entry Sensor is only compatible with the eufy security Homebase or Homebase E.

## BATTERY PLACEMENT

Remove the battery compartment lid on the Entry Sensor and insert the provided CR123A battery. Replace the lid.



02 English

## ADDING ENTRY SENSOR TO YOUR SYSTEM

On Eufy Security app follow the onscreen instructions to add your Eufy Security devices. Choose **Add Device**, then select **Entry Sensor** to add it to your system.

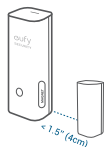
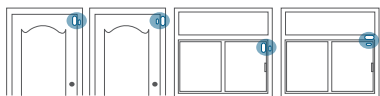


## MOUNTING THE SENSOR




Place the sensor on the edge of a door or window. Use the adhesive strips (On the back of the sensor) or mounting screws provided to mount the sensor.

- Make sure the gap between Entry Sensor and the sensor magnet is less than 1.6 in (4 cm) when the door or window is closed.
- The bottom of the sensor magnet should align with the bottom of Entry Sensor.

English 03



## LED


Sensor LED indicator	Entry Sensor status
	Flashing blue Adding to HomeBase
	Flashing blue (Once) Sensor detects an open/close activity
	Flashing red (Once) Sensor battery is low or disconnects from HomeBase

## FAQ

1. **What battery does the Entry Sensor use?**  
Entry Sensor uses a CR123A battery with 3V output.
2. **How long does the battery last?**  
One CR123A battery usually lasts up to 2 years, but depends on the usage.

Please visit our official website to download the user manual:  
[www.eufylife.com](http://www.eufylife.com)

## SAFETY

 This product complies with the radio interference requirements of the European Community.

### Declaration of Conformity

Hereby, Anker Innovations Limited declares that this device is in compliance with the essential requirements and other relevant provisions of Directive 2014/53/EU. For the declaration of conformity, visit the Web site <https://www.eufylife.com/>.

Do not use the Device in the environment at too high or too low temperature, never expose the Device under strong sunshine or too wet environment.

The suitable temperature for the product and accessories is 0°C - 40°C.  
RF exposure information: The Maximum Permissible Exposure (MPE) level has been calculated based on a distance of d=20 cm between the device and the human body. To maintain compliance with RF exposure requirement, use product that maintain a 20cm distance between the device and human body.  
**CAUTION RISK OF EXPLOSION IF BATTERY IS REPLACED BY AN INCORRECT TYPE. DISPOSE OF USED BATTERIES ACCORDING TO THE INSTRUCTIONS**

SUB-1G Frequency range: 866~866.8MHz 868.2~869MHz

Sub-1G Max Output Power:8.865dBm(ERIP for 868.2~869MHz);11.746dBm(ERIP for 866~866.8MHz)

The following importer is the responsible party (contact for EU matters only)

Importer:Anker Technology (UK) Ltd

Importer Address: Suite B, Fairgate House, 205 Kings Road, Tyseley, Birmingham, United Kingdom B11 2AA



This product is designed and manufactured with high quality materials and components, which can be recycled and reused.



This symbol means the product must not be discarded as household waste, and should be delivered to an appropriate collection facility for recycling. Proper disposal and recycling helps protect natural resources, human health and the environment. For more information on disposal and recycling of this product, contact your local municipality, disposal service, or the shop where you bought this product.

### FCC Statement

This device complies with Part 15 of the FCC Rules. Operation is subject to the following two conditions: (1) this device may not cause harmful interference, and (2) this device must accept any interference received, including interference that may cause undesired operation.

**Note:** This equipment has been tested and found to comply with the limits for a Class B digital device, pursuant to Part 15 of the FCC Rules. These limits are designed to provide reasonable protection against harmful interference in a residential installation.

This equipment generates uses and can radiate radio frequency energy and, if not installed and used in accordance with the instructions, may cause harmful interference to radio communications. However, there is no guarantee that interference will not occur in a particular installation.

If this equipment does cause harmful interference to radio or television reception, which can be determined by turning the equipment off and on, the user is encouraged to try to correct the interference by one or more of the following measures: (1) Reorient or relocate the receiving antenna. (2) Increase the separation between the equipment and receiver. (3) Connect the equipment into an outlet on a circuit different from that to which the receiver is connected. (4) Consult the dealer or an experienced radio/TV technician for help.

### FCC Radio Frequency Exposure Statement

The device has been evaluated to meet general RF exposure requirements. The device can be used in fixed / mobile exposure condition. The min separation distance is 20cm.

The following importer is the responsible party

Company Name: POWER MOBILE LIFE, LLC

Address: 400 108th Ave NE Ste 400, Bellevue, WA 98004-5541

Telephone: 1-800-988-7973

This device complies with Industry Canada licence-exempt RSS standard

# CUSTOMER SERVICE

## Warranty



Mechanical part: 36-month limited warranty

Electrical part: 12-month limited warranty

Warranty can be extended to 24 months

+1 (800) 988 7973 Mon-Fri 9AM-5PM (PT)



+44 (0) 1604 936 200 Mon-Fri 6AM-11AM (GMT)

+49 (0) 69 9579 7960 Mon-Fri 6:00-11:00



Customer Support: [support@eufylife.com](mailto:support@eufylife.com)

Anker Innovations Limited

Room 1318-19, Hollywood Plaza, 610 Nathan Road,  
Mongkok, Kowloon,  
Hong Kong



@EufyOfficial



@EufyOfficial



eufyofficial