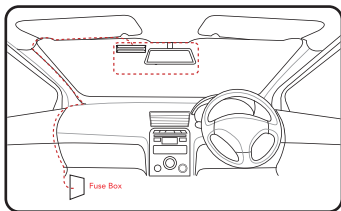
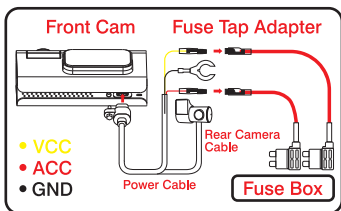


This hardwiring kit is designed for the Road Angel Halo Pro & Aura HD3 ONLY.
It uses a 12V Type C USB Connector. Use with other devices may cause damage.



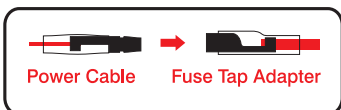
STEP 1

- Connect the Type C Connector of the Halo Pro Hardwire Kit to the Halo Pro Front camera. This is located at the rear of the camera (see image above).
- Gently route the cable under the headliner and or rear-view mirror.
- Route the cable towards the passenger side of the vehicle and down the A-Pillar trim panel next to the Dashboard.
- When at the bottom of the A-Pillar and lower dash, route the Halo Pro Power cable to the location of the vehicle fuse box (see car manual).



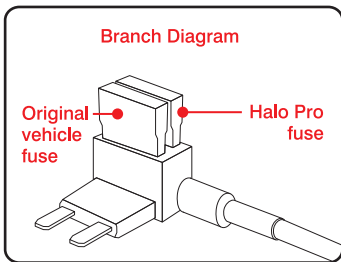
STEP 2

- There are 2 bullet connectors on the Halo Pro power cable - the VCC (Yellow) and ACC (Red)
- Insert each bullet connector into the corresponding colour of the suitable fuse tap adapter.
- Insert the connector fully and tighten the joint point using wire Crimps or Pliers.
- Ensure the insulation sleeve covers the joining points.



STEP 3

- In the vehicle fuse box, please locate and select the suitable fuse(s) to use for both the VCC (Yellow) and ACC (Red) – The VCC (Yellow) is referred to as “Constant” or “Permanent” live. The ACC (Red) is referred to as “Switch” or “Ignition” live



STEP 4

- The fuse tap adapter branch circuit is connected to VCC (Yellow) & ACC (Red) wires by a fuse which protect both the Halo Pro and the Vehicle from voltage Damage.
- Remove the existing fuse as highlighted in (Step 3) – sometimes a fuse will not be present.
- Insert this fuse into the lower slot of the Halo Pro Fuse Tap adapters
- Insert the supplied corresponding fuses into the upper slot of the Halo Pro Fuse Tap adapters
- Now insert the Halo Pro Fuse Tap adapters the empty slot in the car's fuse box, thus making sure VCC (Yellow) & ACC (Red) are in the correct locations!

VCC = Constant Live

VCC Power cable (YELLOW) is referred to as a 'Contant Live' meaning power is always present even when the ignition is not on.

ACC = Ignition Live

ACC Power cable (RED) is referred to as an 'Ignition live' meaning that the power is only present when the ignition key is turned.

GND = Ground/Earth

GND Cable (BLACK) is referred to as 'Ground' or 'Earth' and should be attached to a screw which is attached to the body or bare metal.

DISCLAIMER

Road Angel Group has made every effort to ensure the information contained in this manual is accurate and reliable. However, the information is subject to change without notice. Road Angel Group assumes no responsibility for any damage or injury resulting from incorrect installation of electric devices or components. Any electrical installation should only be performed by a competent or qualified individual. Working with your vehicle's electrical system can be dangerous both to you and your vehicle.

- Ensure the ignition is off before installing the Halo Pro Hardwire Kit.
- Check the polarity and grounding is correct before testing the installation.
- Avoid using a fuse connection for a safety critical circuit, e.g. Airbag.
- Not designed for installation to positive ground circuits.
- Any modifications to the halo Pro or Hardwiring kit and its supplied accessories will void the product warranty. (extension of the hardwiring is permitted to suit the vehicle type)
- The ACC (Red) is referred to as “Switch” or “Ignition” live, meaning power is only on when Ignition is on.
- The VCC (Yellow) - is referred to as “Constant” or “Permanent” live, meaning power is always on even when the ignition has been turned off.
- Please take extra care and attention when routing all cables, ensuring all and any excess cable is neatly located out of the way and not causing obstruction, danger to the driver or operation of the vehicle.

THIS TYPE OF INSTALLATION SHOULD BE PERFORMED BY A QUALIFIED AND CAPABLE INDIVIDUAL OR BUSINESS ONLY. PLEASE CONSULT A PROFESSIONAL INSTALLER FOR ANY QUERIES.

TO ARRANGE A MOBILE INSTALLATION SERVICE PLEASE CALL 0330 320 3030