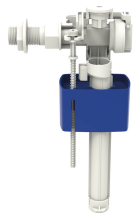
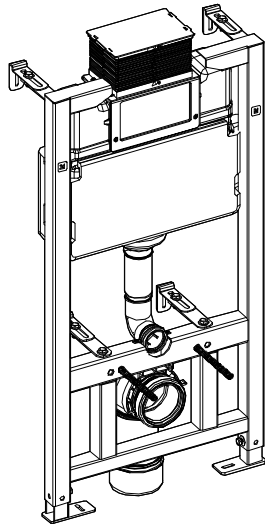


Technical Data Sheet

1000mm Wall Hung Frame and Cistern - CT1709



No.	Description	Product Code	Fixings Included?	Gross Weight
1	1.0m Wall Hung Frame and Cistern	CT1709	Yes	16KG



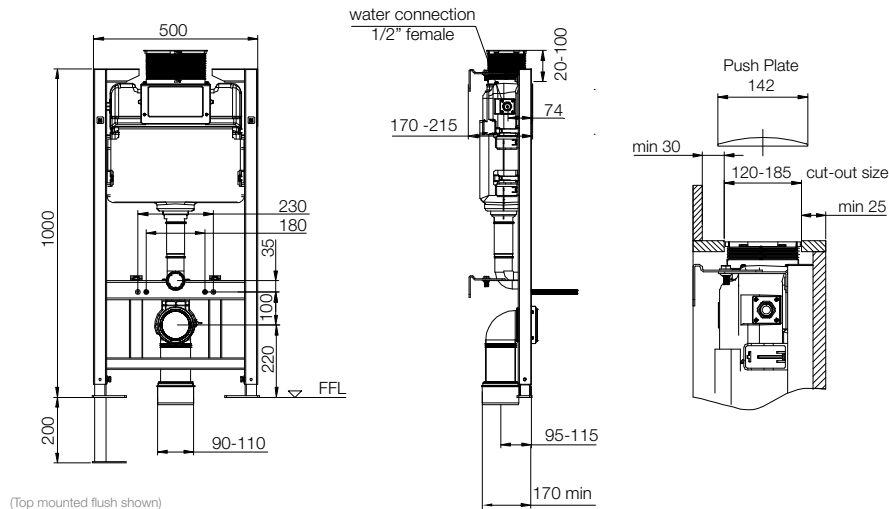
Now comes fitted with air gap inlet valve
Inlet valve WRAS approval number 2105042

KEY FEATURES

- 3/6 litre adjustable flush option
- pneumatic flush valve and push button operation
- side entry 1/2" (female) inlet valve
- 0.2-10.0 bar working pressure range
- polystyrene insulation jacket
- front access panel
- Ideal for use below windows
- Brackets, fixings and 1st fix protective covers included

DIMENSIONS

DIAGRAMS NOT TO SCALE | ALL DIMENSIONS IN MM TOLERANCE OF ± 5MM
ALL PRODUCTS CONFORM TO BRITISH STANDARDS



(Top mounted flush shown)

FAQs

Q - Is the frame supplied with a flush plate?

A - No, this is purchased separately

Q - Can the flush plate be mounted on top?

A - Yes the flush plate can be mounted on the front or top of the cistern

Q - Can the waste pipe be routed out to the side of the frame?

A - Yes, with a minimum distance of 170mm from wall to the front of the frame.

Q - What is the flushing volume of the cistern?

A - The cistern has full flush of 6 litres and reduced flush of 3 litres.