

Insignia

Installation Guide

MX2000 Steam Room

Should you require additional assistance with the installation of your product, please call 01908 317512 or email customerservices@insigniashowers.com.



Contents

Thank you for your purchase	3
Tips for Installation	4
Braided Hose Requirements	5
Electrical, Water & Tool requirements	6
Box contents	7
Column and Right Back Panel Install	8
Right Side Panel Install	9
Left Back Panel Install	10
Left Side Panel Install	11
Bench Install	12
Door and Front Framework Install	13
Door Handle Install	14
Roof Install	15
Control Panel and Electrical Connections	16

Steam Generator Install	17
Control Panel Instructions	18
Sauna Room Safety Guide	20
WEEE Compliance Statement	21



Thank you for your recent purchase of an Insignia shower. Please read this booklet with great care to ensure you get the best out of your build and have a shower that will last for many years to come! Like everything, in order to obtain a first class product that will serve you well for many years, the effort and correctness put into the assembly will reflect in the quality of your finish.

Before we start, here's our 4 top tips which may assist you...

TIP 1—Building Your Shower

This product is suitable for a DIY build, providing you are confident in your DIY abilities. Please look through this build guide and decide on whether you feel confident in undertaking this task. If you are not, seek the services of a professional and show them these instructions before hiring.

TIP 2—Hard Water

Due to the nature of this product we highly advise the purchase and fitting of a water softener.

(Please note: limescale build up may cause damage to your shower and will not be covered under warranty)

TIP 3—Installation

These showers are designed to be free standing and movable from their location should you have the need to replace anything.

ALWAYS USE Flexible braided water inlet pipes (not supplied) and not central heating plastic type! Get your WRAS Approved Flexible Braided Hoses [here](http://www.insigniashowers.com/wras-approved-braided-hoses.html). (www.insigniashowers.com/wras-approved-braided-hoses.html)

NEVER FIX with rigid pipes, **NEVER FIX** the unit to the wall or floor.

TIP 4—Sealing

When using Insignia's RubberGum, please ensure the product does not come in contact with your silicone as this will cause the RubberGum to fail and will not adhere as intended. RubberGum is immediately waterproof and will gain additional strength over time.

Have you got yours?

Essential for your shower build!

The Insignia **WRAS** approved flexible braided shower hose is an essential part of your shower build. Designed specifically for connecting the hot and cold water feeds allowing for an easier installation. **Note: These are not available in shops.**

Don't worry if you have forgotten to purchase this as we've included this handy link for you! All you need to do is use your smart device and simply point your camera at the QR code to scan it. You can also download a free QR reader app.



Not got a smart device? No problem! Just type the following web link into your web browser:

www.insigniashowers.com/wras-approved-braided-hoses.html

Essential
Item



Electrics

All connections **MUST** be carried out by an approved part P electrician and a minor works certificate must be issued upon completion. This product is NOT designed for DIY install and improper installation could be fatal.

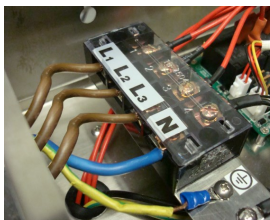
Please use correct size and type to meet electrical codes. Leave 2 feet of slack wire at generator location for finish hook-up. Connect the generator to a dedicated circuit breaker.

A. Route the supply wire through the hole marked POWER.

B. Connect the supply wires to terminals marked L1, L2 & L3 and N. Please see Diagram for 240v Conversion

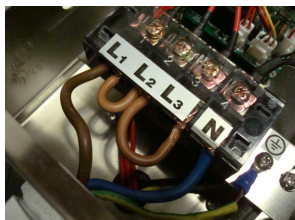
C. Connect the ground to the ground screw marked accordingly.

3 Phase 380v



Connect 3 x live wires in to (L1) then (L2) and (L3). Connect the 1 neutral Cable in to position (N) & finally 1 x Earth Cable to the earth screw on the plate.

Single Phase 220/240v



Connect 1 x live wire in to (L1) then bridge (L1+L2) and (L2 + L3) as show in the picture above. Connect the 1 neutral Cable in to position (N) & finally 1 x Earth Cable to the earth screw on the plate.

Pressure/Water Requirements

We recommend a BAR pressure between 2.5 and 3.4 BAR. If you have a combi boiler system no problem should be experienced. If you have a gravity feed older type installation (hot water tank type usually less than 1 BAR) you will almost certainly need a pump. We cannot advise on which type of pump is used, location or design because all house plumbing layouts vary. This is a job for your installer/plumber. The end delivery however must fall within the scope above.

Important Note Do not exceed 3.4 BAR pressure under any circumstances. Warranty is void if so as damage will occur. If you have a combi supply, please use a pressure reducing valve if required to lower the BAR pressure to the shower.

Please Remember that this product is free standing and is designed to be pulled away from the wall.

The waste hose must be of a flexible type (**Supplied. Note: Not suitable for solvent type joints**)

The water supply pipes must be that of a flexible braided type (**not supplied**).

DO NOT OVERTIGHTEN THE BRAIDED HOSES AS IT CAN CAUSE THE CONNECTION TO POP AFTER A FEW WEEKS OF USE.

Always fit easy to get to isolation taps on both hot and cold water supply (not supplied). Just like a dishwasher or washing machine, this product **MUST** be isolated when not in use.

Tools Required

You will require:

- | | |
|---|--|
| <ul style="list-style-type: none"> Scissors Knife Spirit Level Tape Measure | <ul style="list-style-type: none"> Philips Screwdriver Electric Drill Safety Gloves Safety Glasses |
|---|--|

Parts Required

- RubberGum (supplied)
- Plumbers Mait (not supplied)
- Hot and cold isolation valves (not supplied)
- Suitable McAlpine type 40 mm compression coupling for waste to house connection.
- 3x Braided hoses (not supplied). If you haven't purchased these already, simply click the following link below or copy in to any web browser. For ease we have listed the required pack below for your install.
- Shower cabins with steam require **pack 2**

<https://www.insigniashowers.com/wras-approved-braided-hoses.html>

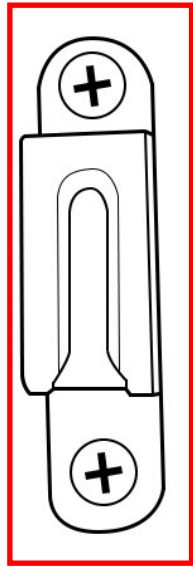
What's in the Boxes?

Contents	Quantity	✓
Central Column	1	[]
Left Back Panel	1	[]
Right Back Panel	1	[]
Glass Door/Frame	1	[]
Door Handle	1	[]
Left Side Panel	1	[]
Right Side Panel	1	[]
Roof	1	[]
Marble Bench	2	[]

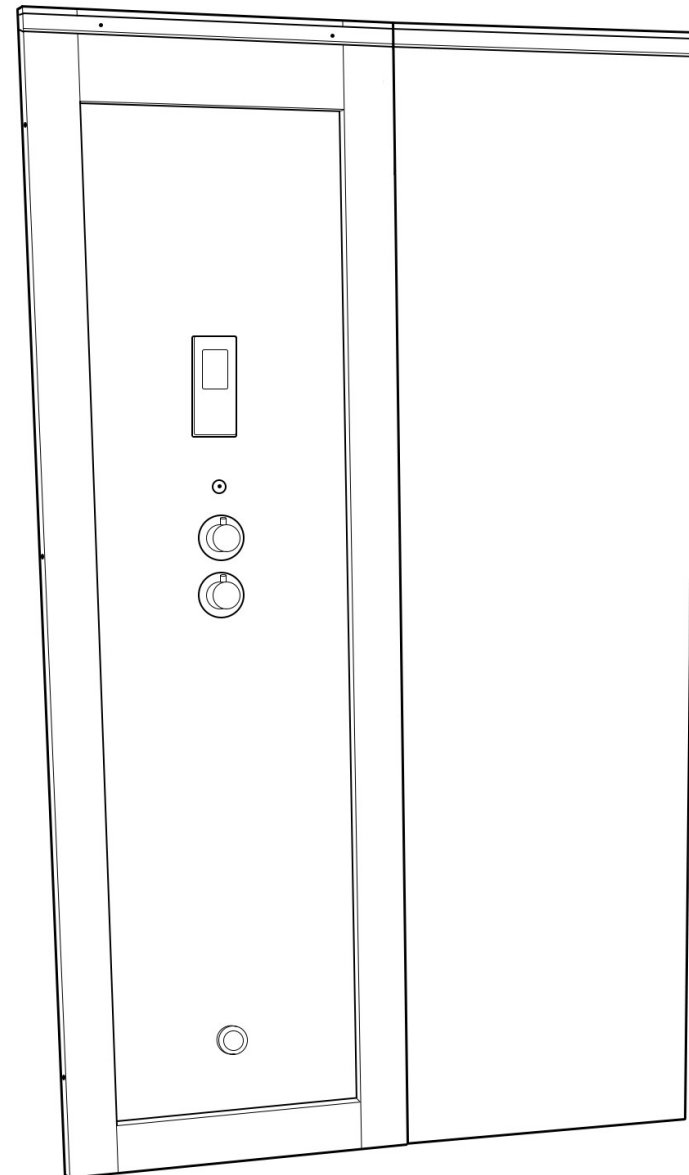
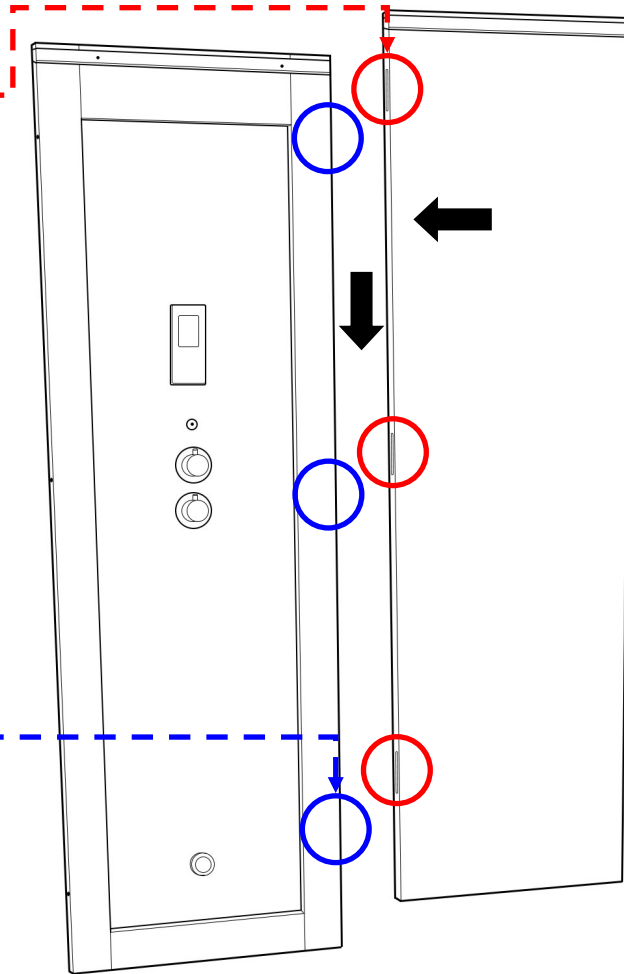
VERY IMPORTANT

Have you got everything? If not please contact the Insignia directly on **01908 317 512**. Remember **NEVER** book your tradesman until everything has arrived, been checked and is present. No replacement/missing parts can be obtained free of charge during or after the build. Any claims can only be within the timescale permitted (48 hours after delivery) and always **BEFORE** build.

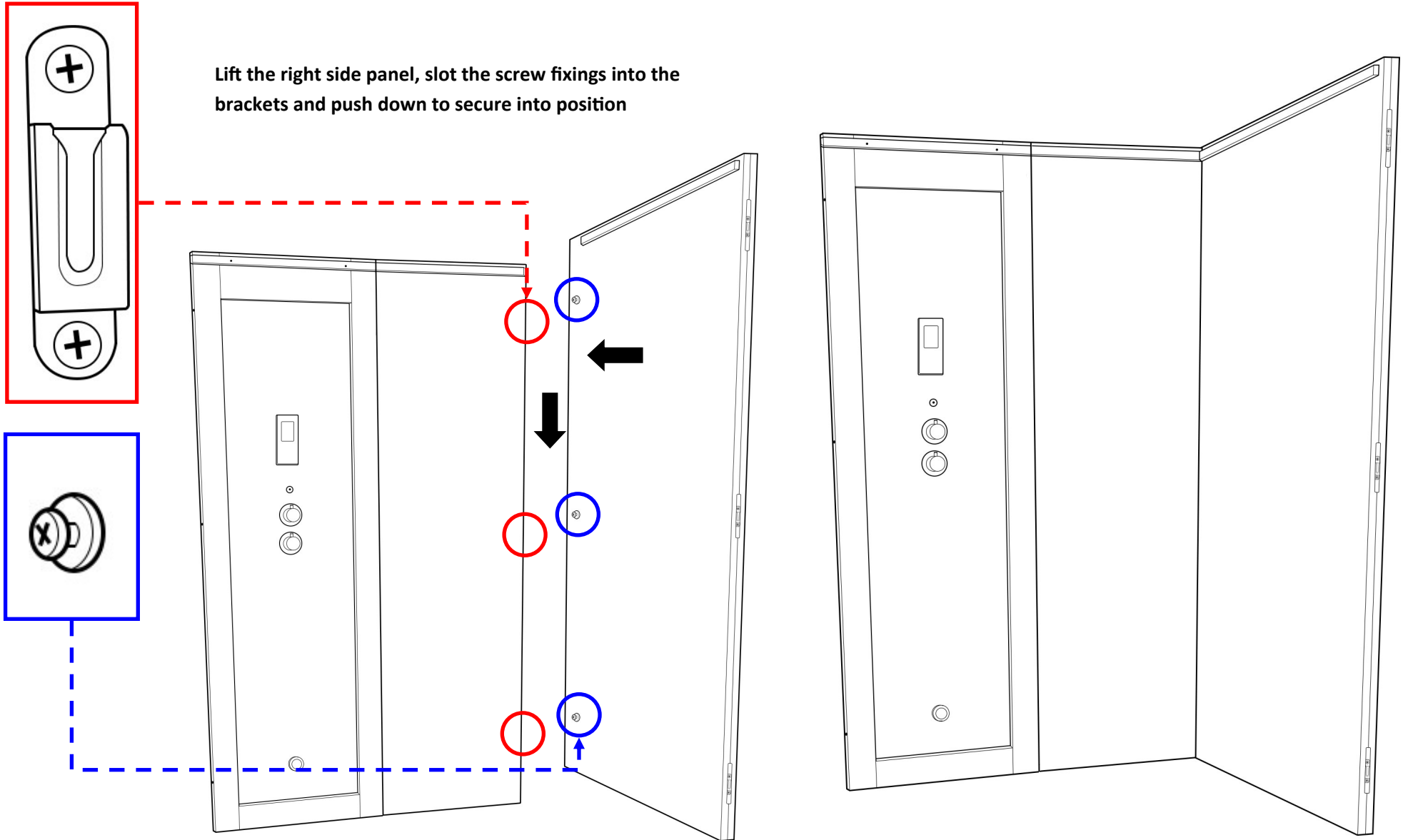
Step 1 — Connecting the column and right back panel



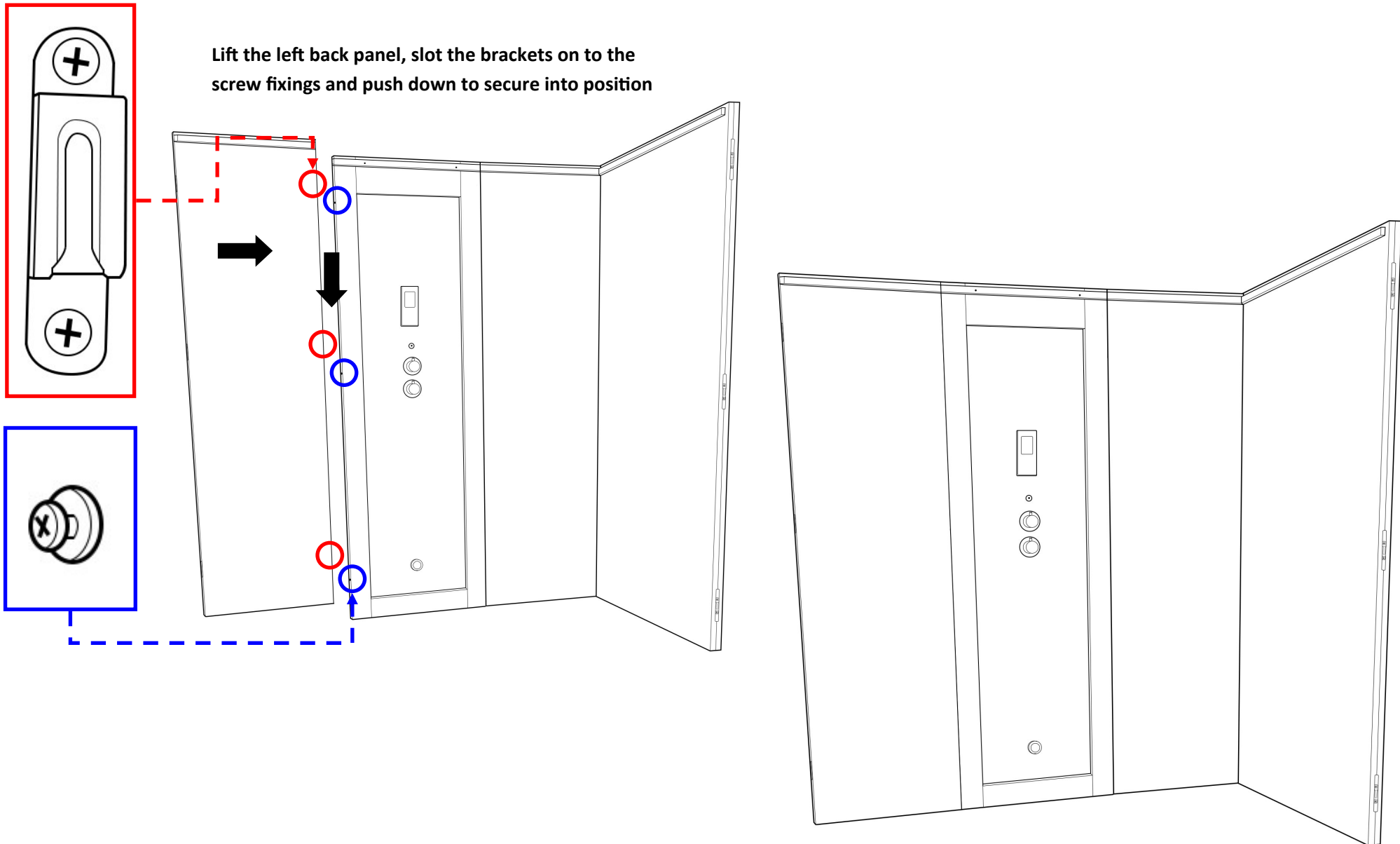
Slot the panel bracket over the screw fixings and push down to secure in place.



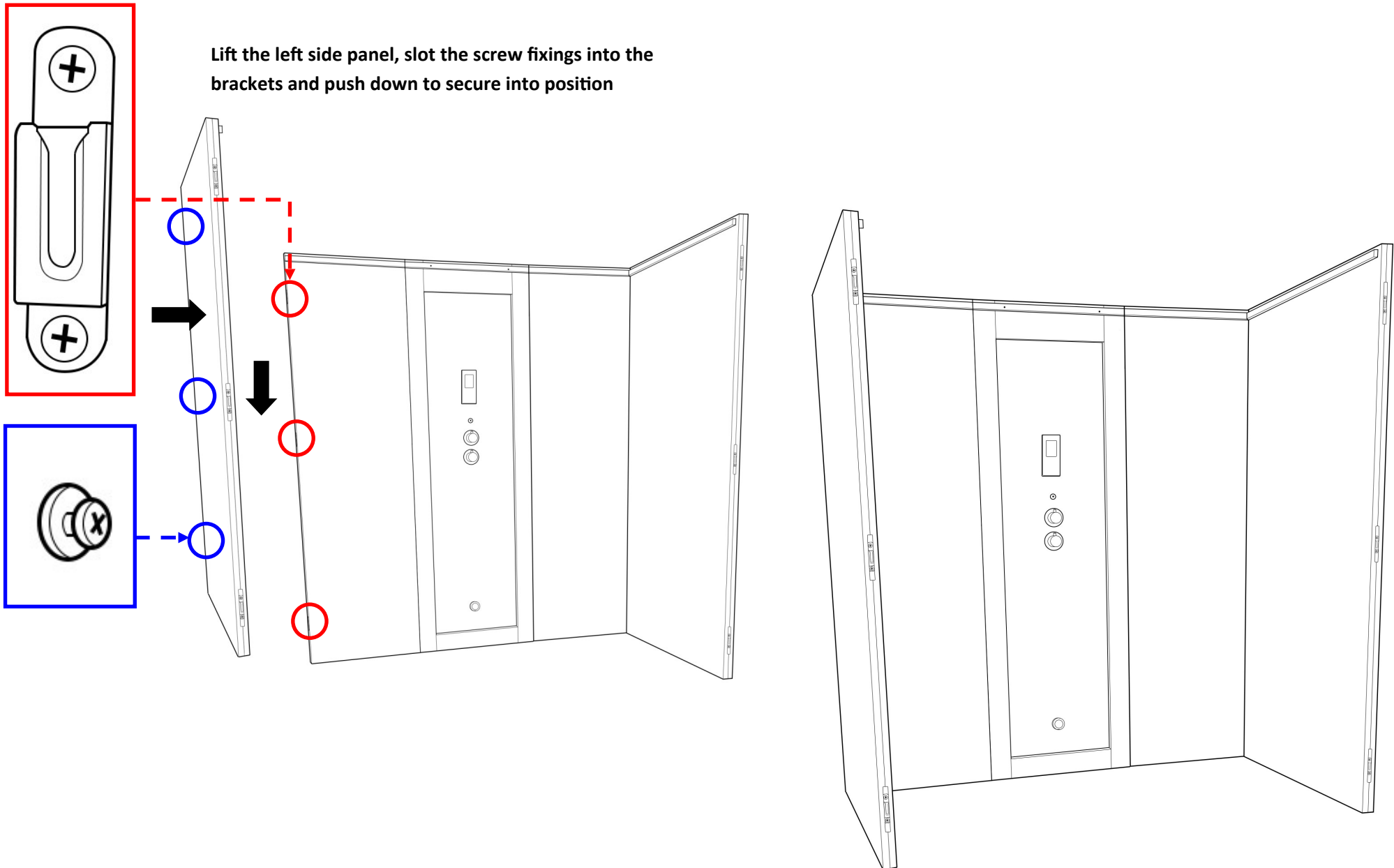
Step 2 — Connecting the right side panel



Step 3 — Connecting the left back panel

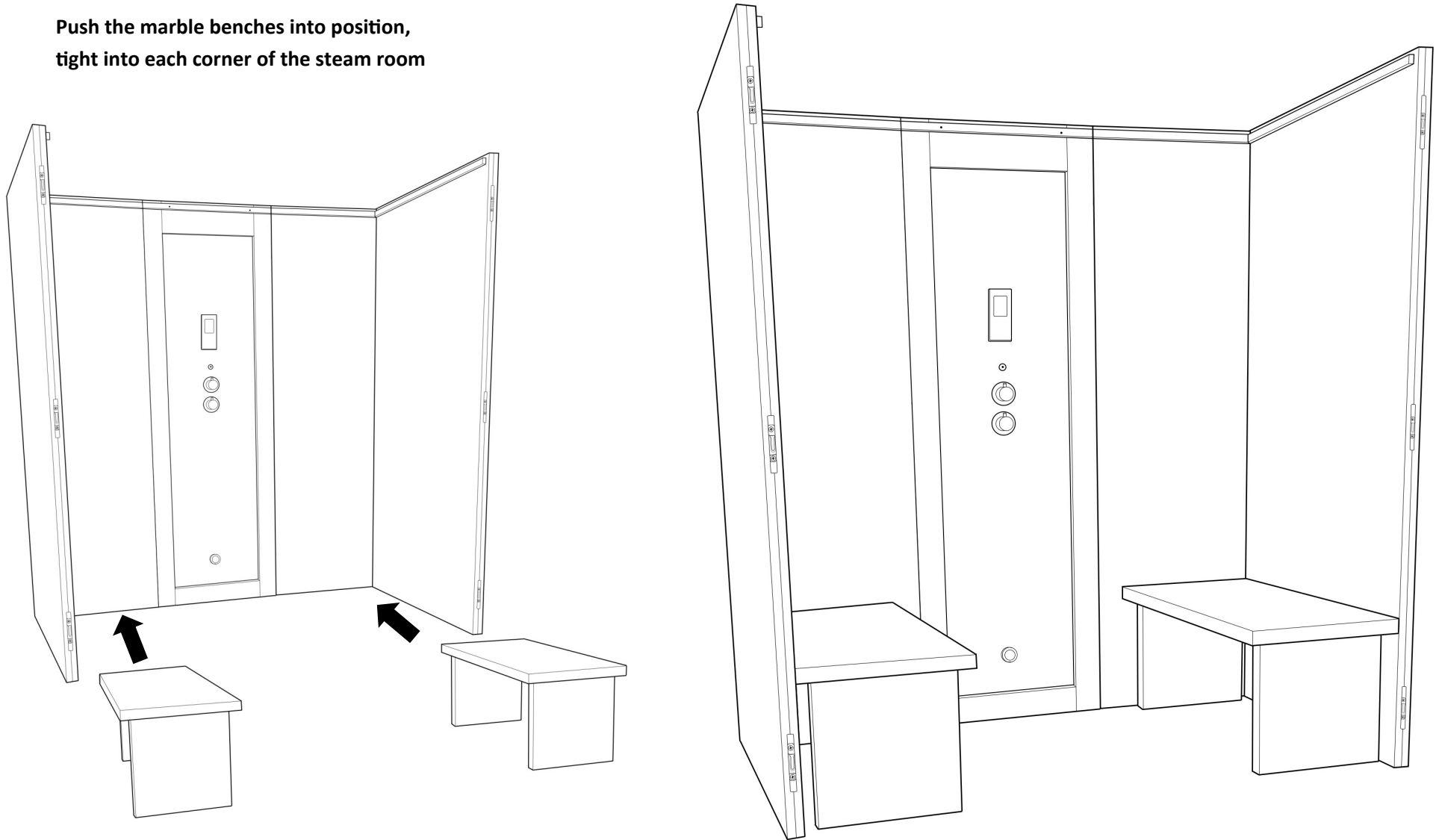


Step 4 — Connecting the left side panel

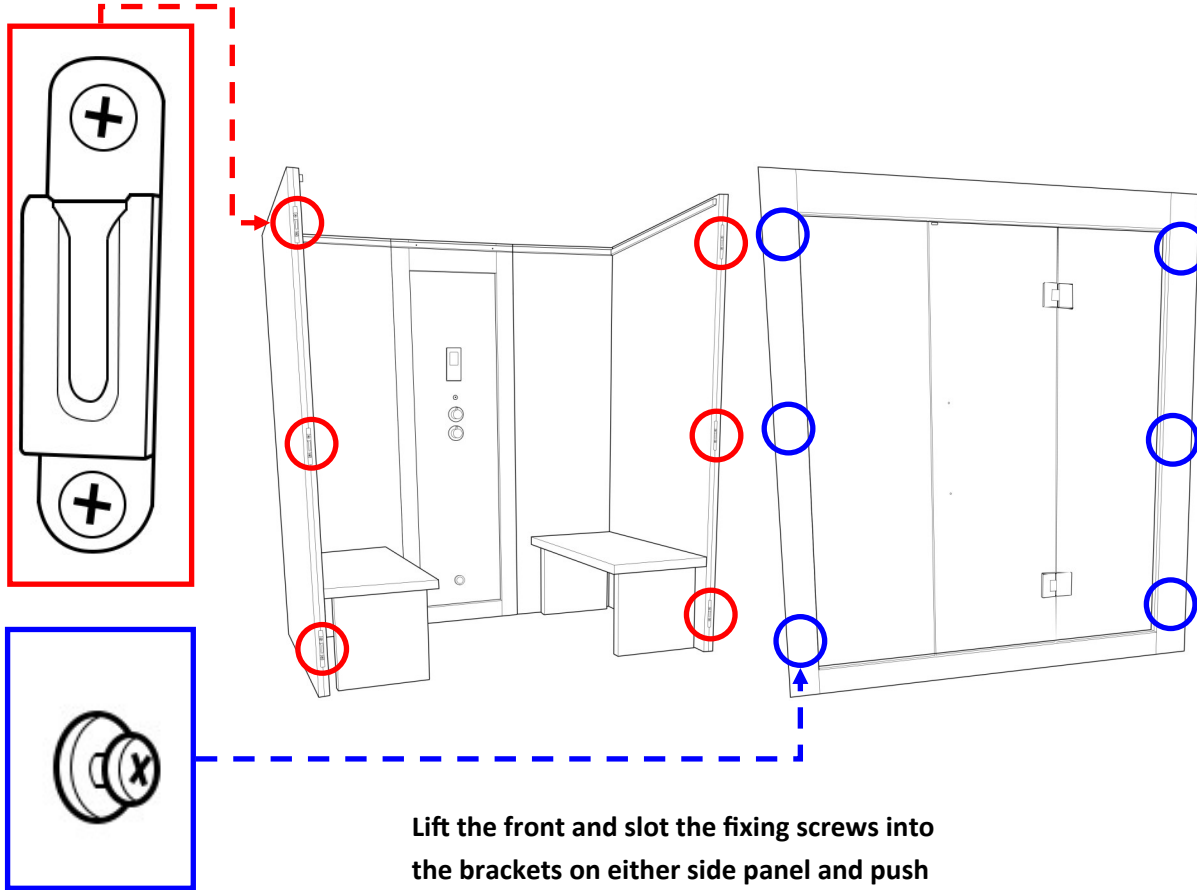


Step 5 — Placing the benches in position

Push the marble benches into position,
tight into each corner of the steam room



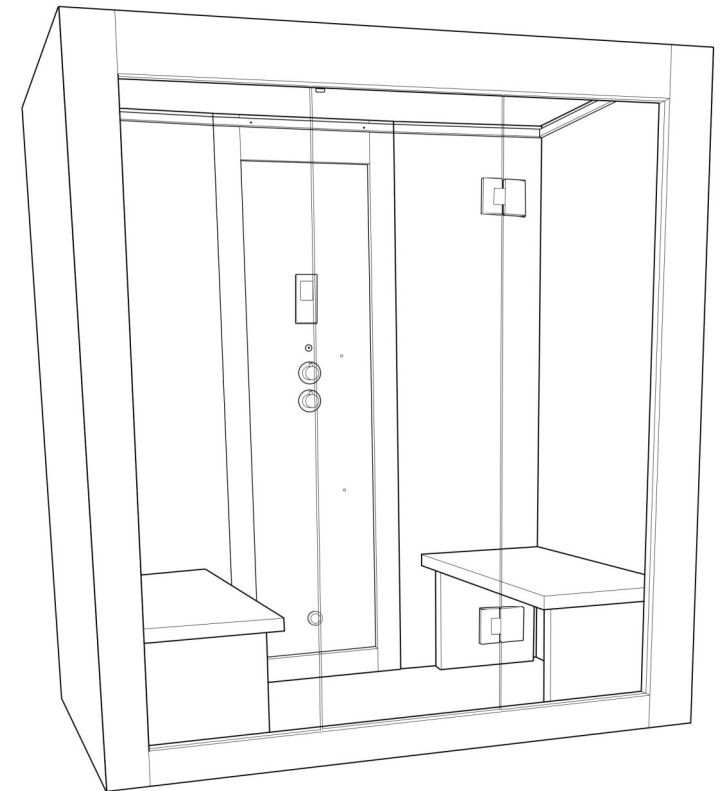
Step 6 — Connecting the front



Lift the front and slot the fixing screws into the brackets on either side panel and push down to secure into position

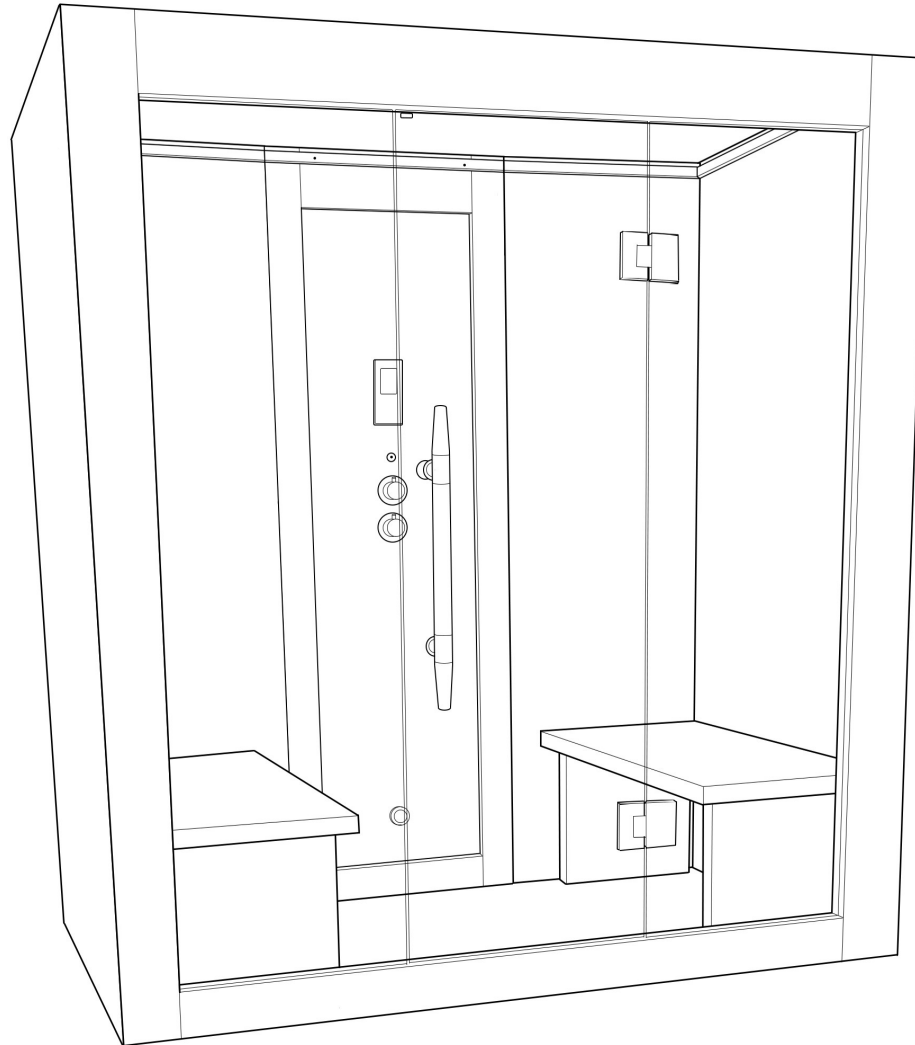
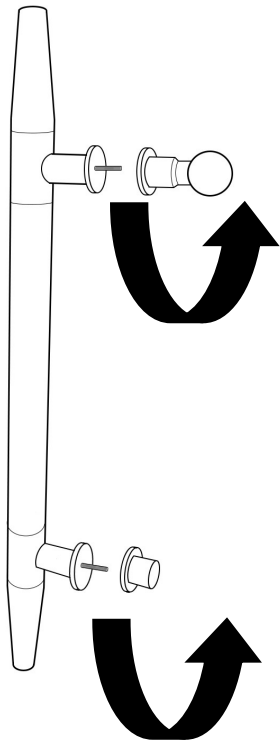
CAUTION:

Very Heavy—3 Person Lift



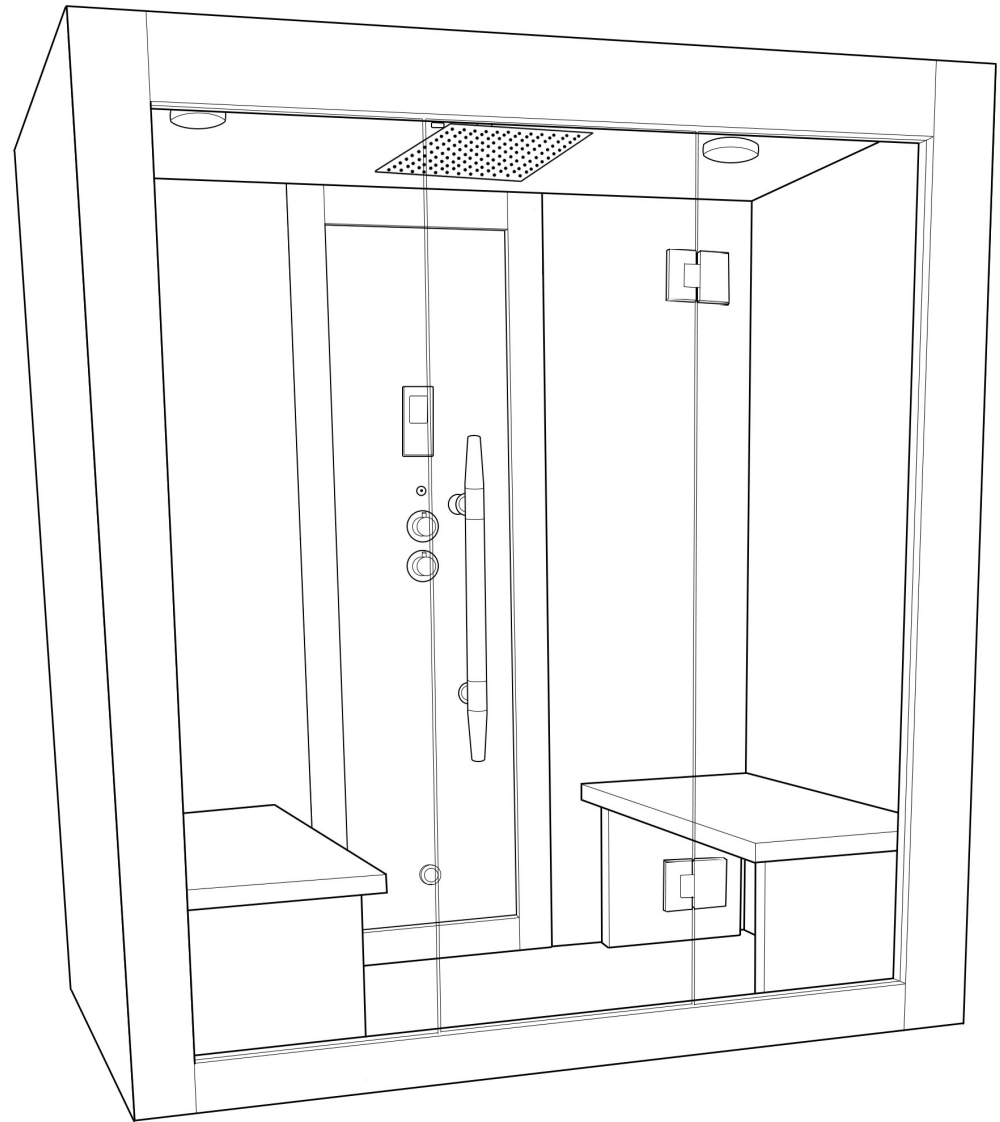
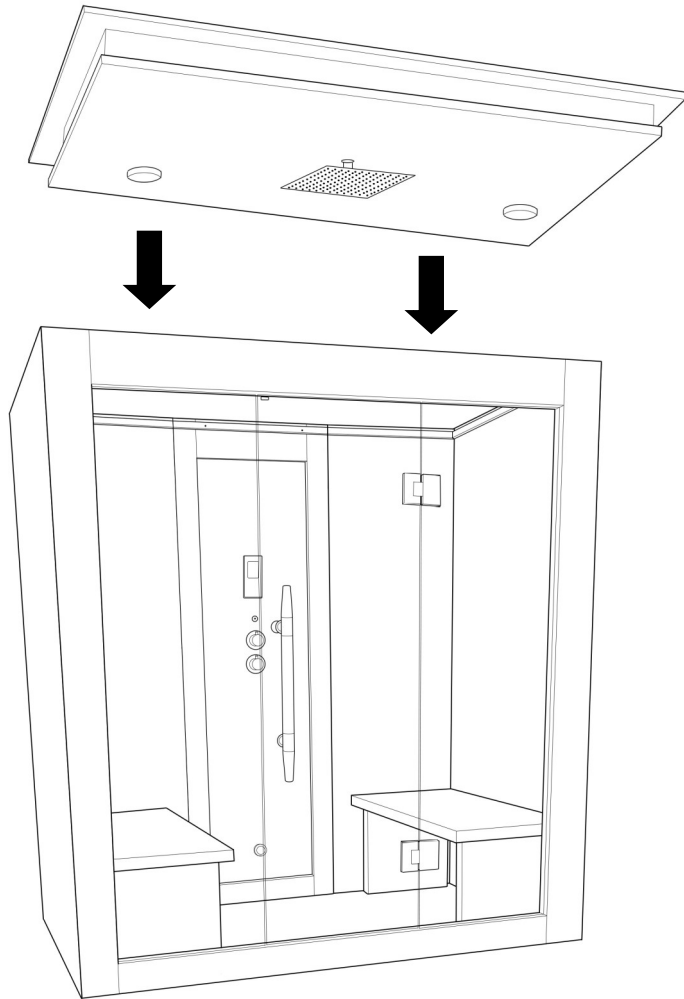
Step 7 — Installing the door handle

Unscrew the door handle knobs, place the screw through the door and reconnect

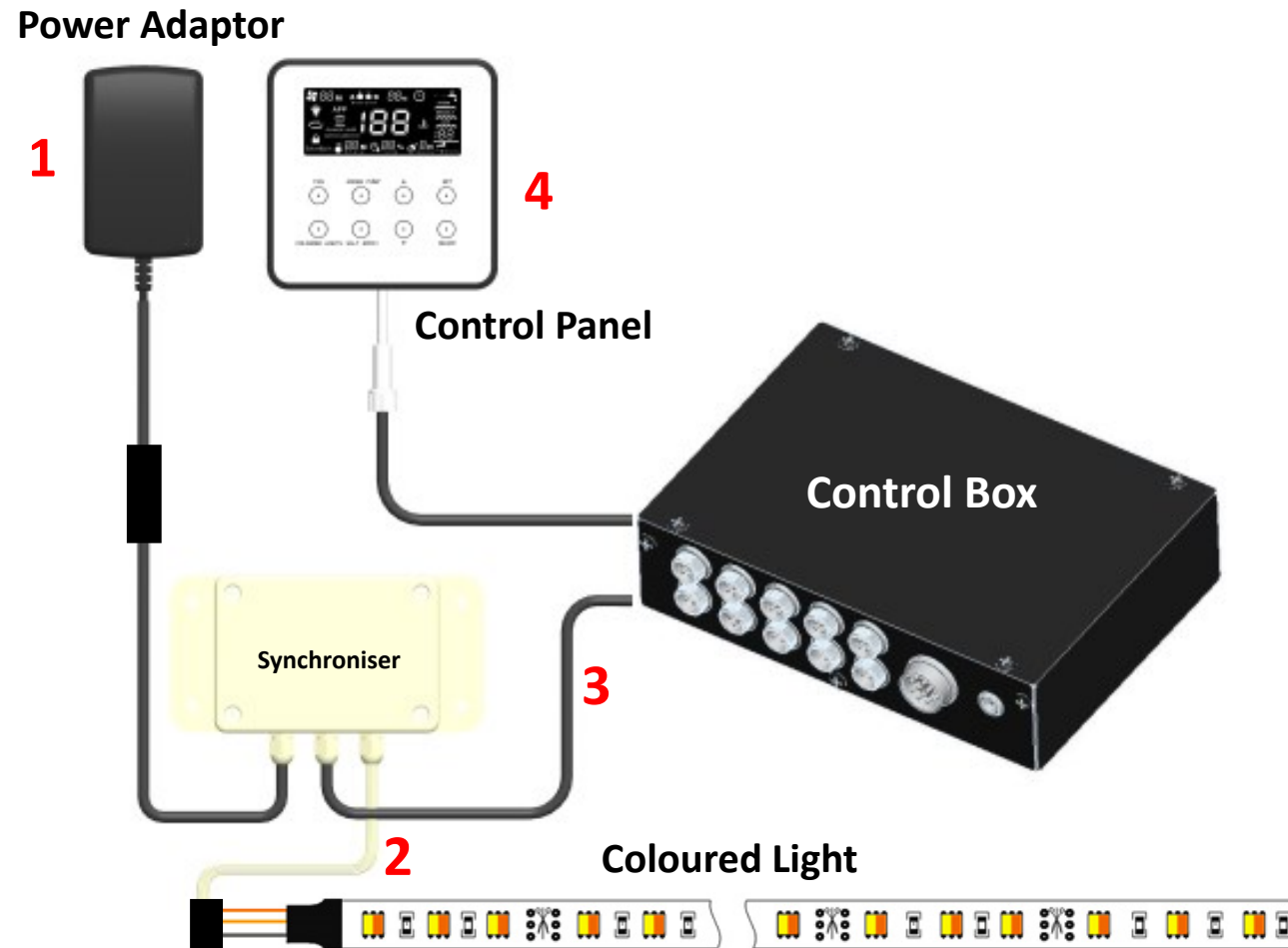


Step 7 — Installing the roof

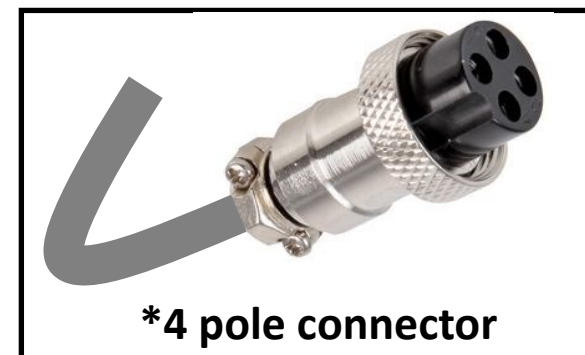
Lift the roof and slot into position



Light Installation

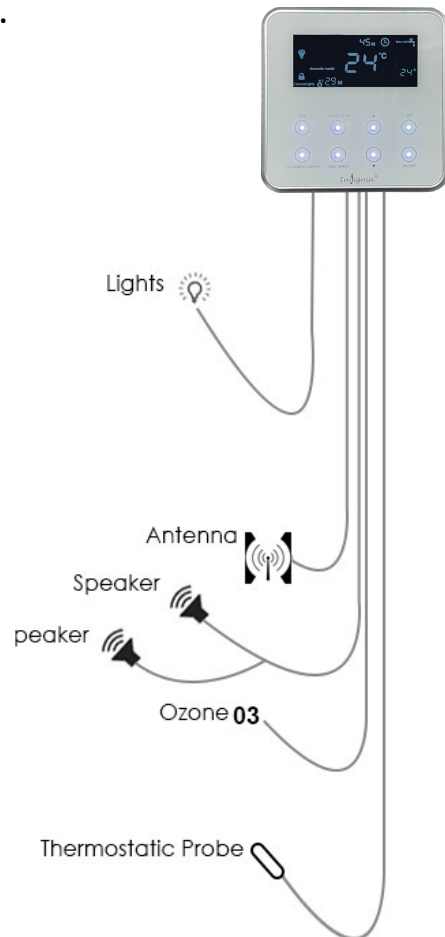


1. Connect the **Power Adaptor** to the **Synchroniser**.
2. Connect the **Coloured Lights** to the lighting cable on the steam room roof.
3. Connect the **Synchroniser** cable to the 4 pole* extension lead and connect to the **Control Box** (labelled "Coloured light")
4. Connect the **Control Panel** to the **Control Box** (if not already connected)



Step 8 — Control panel and electrical connections

Connect all wires, matching the image labels to ensure correct connection.



All connections **MUST** be carried out by an approved part P electrician and a minor works certificate must be issued upon completion. This product is NOT designed for DIY install and improper installation could be fatal.

Please use correct size and type to meet electrical codes. Leave 2 feet of slack wire at generator location for finish hook-up. Connect the generator to a dedicated circuit breaker.

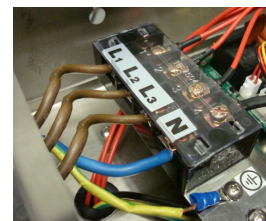
ELECTRICAL FINISH

A. Route the supply wire through the hole marked POWER.

B. Connect the supply wires to terminals marked L1, L2 & L3 and N. Please see Diagram for 240v Conversion

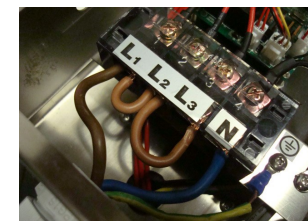
C. Connect the ground to the ground screw marked accordingly.

3 Phase 380v



Connect 3 x live wires in to (L1) then (L2) and (L3). Connect the 1 neutral Cable in to position (N) & finally 1 x Earth Cable to the earth screw on the plate.

Single Phase 220/240v



Connect 1 x live wire in to (L1) then bridge (L1+L2) and (L2 + L3) as show in the picture above. Connect the 1 neutral Cable in to position (N) & finally 1 x Earth Cable to the earth screw on the plate.

Commercial model operating guide

Turn on the steam generator by pressing the ON/OFF button on the main controller on the steam generator which in turn will begin to heat up the water. Once 80°C has been reached the steam generator will be in standby mode, ready for use.

When the fast steam button is pressed, steam will be produced in approx. 30 seconds. After 30 minutes, the system will revert back to “stand by” and steam will stop being produced. Simply press the button again to activate the steam or stop it at any time.

Advantages:

This design saves consumers’ waiting time, as well as also saving energy.

The 30 minutes automatic ‘back to stand by status’ design would prevent energy waste caused by the owner or customers forgetting to turn off the steam generator after use.

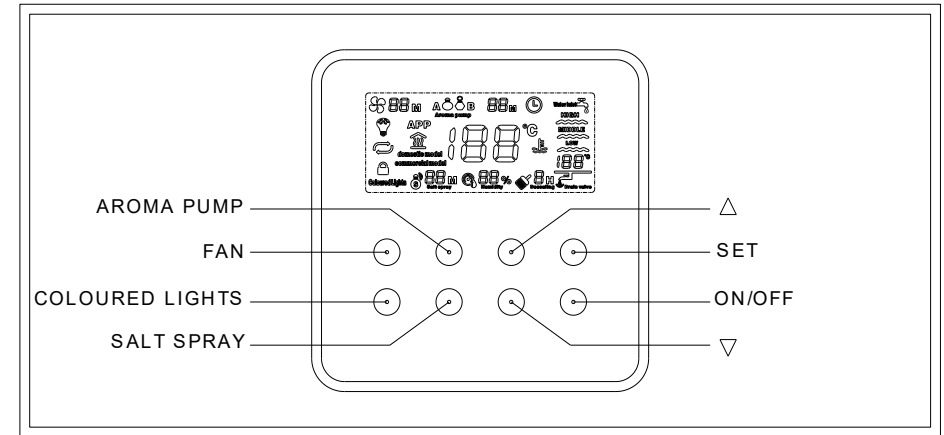
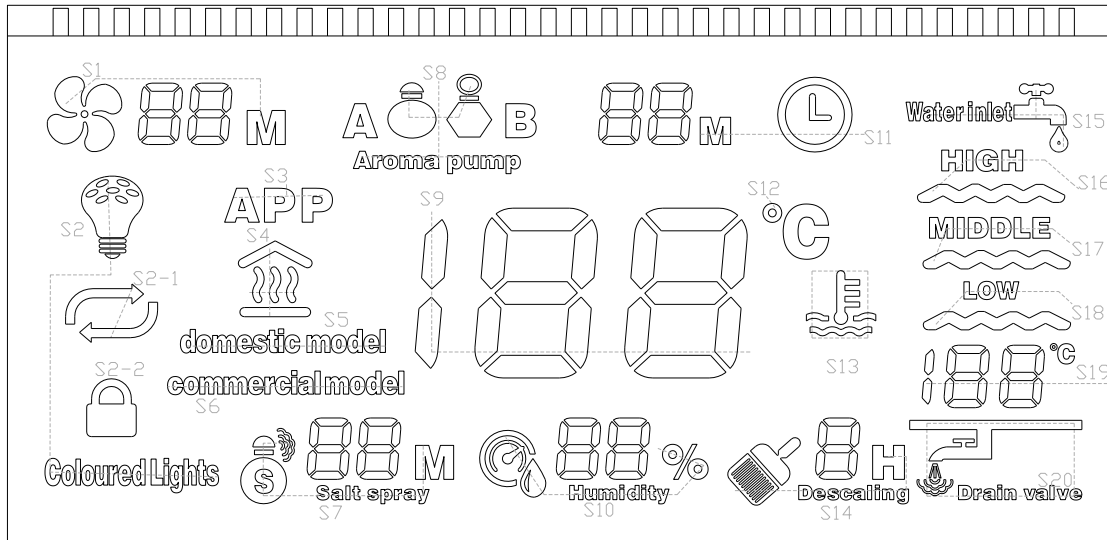
The fast steam button is designed to be installed inside the steam room so users can reactivate easily if they wish to continue their steam session after automatic shut off after 30 minutes.

If the steam session time less is than 30 minutes, it can be back to set back to ‘stand by’ status manually by pressing the button and switching off the steam.

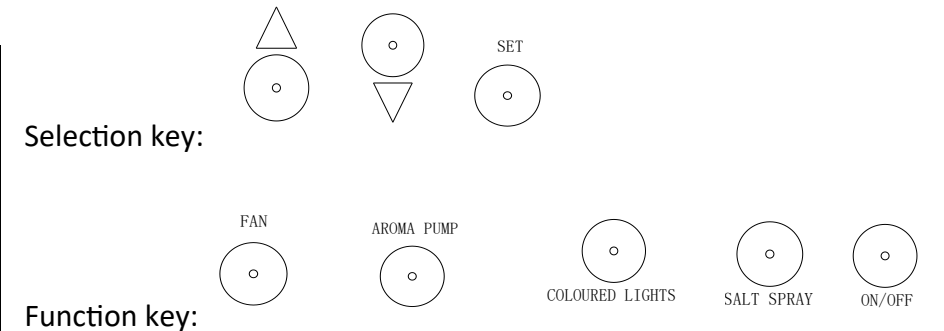
- Once the “fast steam” mode is activated, the steam generator will go into “commercial mode” and the controller will show “commercial mode” and the remaining working time. The time counts down from 30 to 0.
- Once 30 minutes runs out, it will revert back to stand by (Heat preservation state).



Control Panel Interface



S1	Exhaust fan	S7	Salt spray	S14	Descaling
S2	Colored lights	S8	Aroma pump	S15	Water inlet valve
S2-1	Change colors automatically	S9	Temperature instructions	S16	High water level
				S17	Middle water level
S2-2	Lock the color	S10	Humidity instructions	S18	Low water level
S3	APP	S11	Working time	S19	Water tank temperature
S4	Heating instructions	S12	Celsius degree		
S5	Domestic model	S13	Heat preservation	S20	Drain valve
S6	Commercial model				



Bluetooth Connectivity

To activate the Bluetooth, follow these steps:

- 1 – Turn on your Bluetooth device (phone/tablet)
- 2 – Search for the device called “B40” and press connect.
- 3 – It will ask for a pairing pin. The pin can be found on the lid of the Bluetooth box.
- 4 – You will hear a beep once connected.
- 5 – Play whatever media App you use for your music (Apple Music, Spotify etc)



Step 8 — Steam Generator Install

The Insignia steam generator can be hung on a wall or sit on a base. The best mounting location will satisfy all or most of the following:

- 1) The steam line should slope to allow condensation to drain. Condensation should drain into the steam room.
- 2) The steam line **MUST** have a minimum of 200mm of straight pipe directly from the output of the steam generator prior to adding any bends. Failure to follow this will result in the steam backing up in to the generator and can cause failure.
- 3) The steam line should be less than twenty feet long. Ten feet is preferred. Steam lines should be insulated.
- 4) The mounting location should minimize the number of bends and elbows in the steam line.
- 5) The generator should be installed in a dry, well ventilated area. Suggested locations are under a vanity, in a closet, attic, crawl space or basement.
- 6) The mounting location should allow for a drain hook up.
- 7) The generator must be mounted in a minimum 7 cubic foot space.
- 8) The generator should not be mounted in an area subject to freezing.
- 9) **NEVER** reduce the steam line size from 3/4"

Wall Mounting:

1. Note the location of the mounting holes on the back of the generator. The screws must set directly into studs or equivalent supports.
2. Carefully hang the generator on the two screws on it's own mounting brackets. Tighten the screws. Replace the front cover. Secure the front cover with six screws.

Very important!

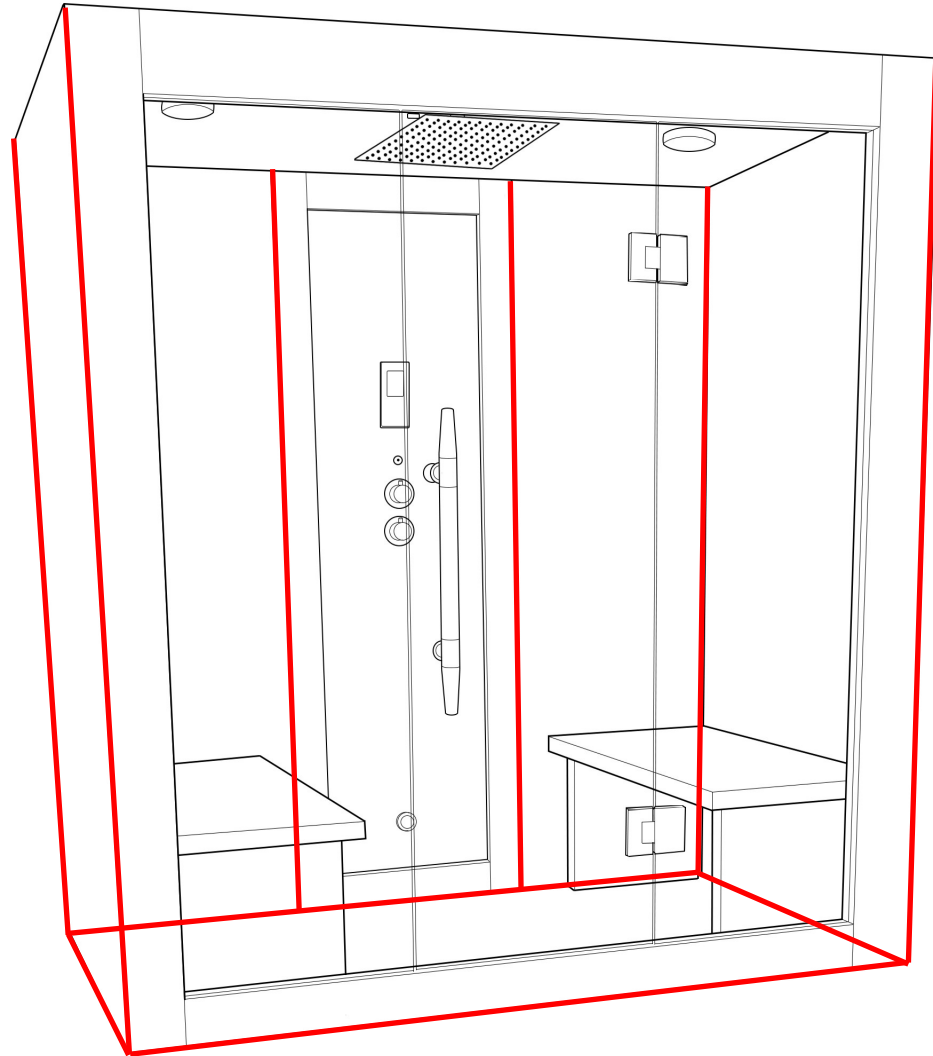
The steam generator **MUST** be installed to allow air circulation on all 4 sides. For example allow a minimum 10cm from any obstruction and not covered in. Please see example on page 12 how to wall mount allowing ventilation around the unit. **NEVER** obstruct the fan, this is for cooling the unit and will operate every time the steam generator is operational.

Floor Mounting:

1. In general the width of the unit allows it to sit on a shelf, across the ceiling joists or on a floor. The generator must be restrained from moving. Normally the piping will provide adequate support. If not, additional support must be provided.
2. All floor installed generators must have provision for routine draining of the tank.

Sealing your shower

NOTE: Seal all the joints on the shower unit, as well as sealing the panels to the floor creating a clean watertight finish. The roof joints do not require sealing, however it can be should you wish. See highlighted areas in red which should be sealed **internally** on the steam room.



Steam Room & Shower Safety Guide

1. Never leave children unattended in the shower or bath.
2. Never bath children (under 12) using whirlpool function if fitted.
3. Regulate the temperature of water before showering.
4. Never allow children to use the steam function. This function is for **ADULTS ONLY**.
5. Always be aware of the steam outlet position. Never use in close proximity to the person using it.
6. Exit the steam room immediately if feeling dizzy, faint or short of breath.
7. Do NOT use the steam room if you're pregnant, have a heart condition, have low or high blood pressure. If you're unsure consult your GP before use.
8. If you have any underlying health conditions which you feel could be aggravated by using a steam room, consult your GP before use.
9. If you begin to have any issues with your health after using a steam room, stop immediately and consult your GP regarding your symptoms before continuing to use.
10. Consult your GP before using the steam room if you're on medication at all, especially with drowsy side effects.
11. Never use this shower if you have been drinking alcohol or under the influence of other substances.
12. Never use with more than one person unless the shower is designed for this.
13. This product is not to be used for washing/bathing animals.
14. Always turn power supply off after use.
15. Always turn water supply off after use.
16. Ensure room is well ventilated after a steam session by using your bathroom extraction fan or opening a window.

WEEE Compliance Statement

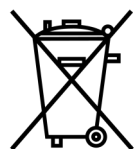
The UK Waste Electrical and Electronic Equipment (WEEE) regulations came into force on 2 January 2007. Under this new legislation, producers of electrical and electronic equipment (EEE) have to fulfil certain obligations.

Under the WEEE directive Insignia is considered the producer of certain products we supply and in line with the demands of the legislation we are pleased to offer the opportunity to return these products to us for treatment and recycling.

Insignia products will generally have an identifying mark and the common crossed out wheelie bin label. We accept returns of all products carrying the Insignia brand. All other products are either considered outside the scope of WEEE or Insignia is not technically the producer of these products. Insignia also accepts historic like-for-like WEEE returns. All WEEE returned to Insignia will be recycled in appropriate treatment and recycling centres in accordance with the legislation. If you wish to return any products to us, please send your item(s) to our head office.

Company Contract No. 326457

WEEE Producer No. CBDU64227



LABELLING

Products labelled with the WEEE symbol (a crossed out “waste bin”) indicate that the final user should not discard this product along with other household waste, but that it must be collected and treated separately.



Returns Address for WEEE

Insignia

9a Deans Road, Old Wolverton, Canon Industrial Park, Milton Keynes, Buckinghamshire, MK12 5NA, UK



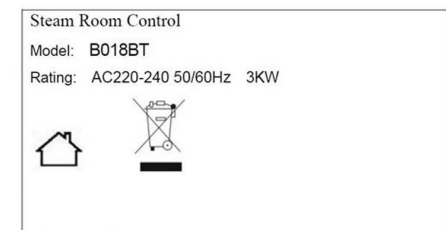
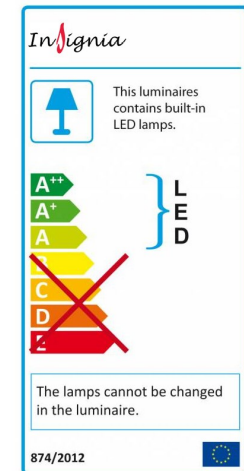
EU – Declaration of Performance

Insignia declares that all its products complies with the essential requirements and other relevant provisions of Directive 305/2011/EC. A copy of the Declaration of performance is available from www.insigniarange.co.uk/ce.aspx

Insignia™ is a registered trademark of Maclean International Ltd, 9a Deans Road, Old Wolverton, Canon Industrial Park, Milton Keynes, Buckinghamshire, MK12 5NA, UK

All images are subject to copyright. Images may not be used in any way shape or form with out written permission from Maclean International Ltd. Images are NOT permitted to be saved, printed or uploaded. Violation of copyright laws are punishable by law.

All images are registered with
ImageTraker



Insignia™ is a registered trademark of Maclean International Ltd

All images are subject to copyright. Images may not be used in any way shape or form with out written permission from Maclean International Ltd. Images are NOT permitted to be saved, printed or uploaded. Violation of copyright laws are punishable by law.