

VIDALUX

S-01 Sauna Manual



INSTALLATION AND OPERATING MANUAL

Technical Support: 01524 489939

Warranty Claims Or Delivery Damage: www.Vidalux.co.uk



Thank you for purchasing this product. To guarantee the product delivers a long service life, please ensure it is fitted and used in accordance with the instructions contained in this booklet.

No installation should take place until all items have been deemed cosmetically acceptable. Once installation commences all products enter into their governing warranty periods, no returns can be accepted, by commencing with the installation you are accepting the goods cosmetic state with all 'workings' being covered by warranty. (contact us for more information before installing if required)

IMPORTANT NOTICE

Before you proceed with fitting your Vidalux sauna please read the following:

By commencing testing and installation of the unit you are agreeing to the Terms and Conditions set out by Vidalux: copies of these are available online or by contacting us by email or phone (details on the cover of this manual). Proceeding with the installation is deemed as an acceptance of the cosmetic condition. It is impossible to assume the condition on arrival once the items have been subjected to the rigors of install and items must be inspected and concerns reported prior

You are required to ensure the purchased product dimensions allows for ease of passage to the intended installation area.

Weight tolerances of installation area - it is advised to refer to a builder and/or Building regulations to ensure the product placement area has sufficient joist/floor support.

1. It is important that you ensure that your purchase has been delivered undamaged. You are required to check the contents and report any damage that you feel needs repairing or replacing within 48hrs of receipt of goods. Items reported damaged after this time WILL be chargeable as it is harder to prove the item arrived in this condition after this period
2. The product you have purchased is designed for home DIY fitting. The product requires connection to electricity and this by law requires a Part P qualified electrician. In the event of electrical failure, failing to provide evidence of this may void the relating product warranty

3. We are a supply only company. If you report any damage we will send replacements or solutions to remedy the problem described. We endeavor to fully understand the problem first by troubleshooting questions and then propose the solution. We may even ask for digital images to be sent via email to assist the process. The warranty is parts only and does NOT include installation/inconvenience or other related costs.
4. Do not book any installation service until you have inspected the unit. We cannot be held responsible for delays and costs incurred by having to return to fit parts that need supplying.
5. We cannot be held liable for inconvenience caused due to lack of facilities caused by any delay in receiving your product or whilst awaiting parts.
6. Regarding our sales and technical support: We know our products and their requirements, but we are not qualified plumbers or electricians and accept no liability for claims suggesting the same. You are advised to check the suitability of the product with a professional body. It is the customer responsibility to ensure the product is fit for purpose.
7. A 'Completion Certificate' is included at the end of the manual where you should record the details of your installers - you will need this to record your warranty on our website. You MUST register the product warranty within 90 days following delivery

Please note **4 person models** will require to be
hardwired into a switched fused spur

Contents

Important safety guides	1
Structure of infrared sauna	2
Installation process	3
Installation precautions	4
Control panel operation	6
Control box	7
Maintenance	8
Trouble shooting	9

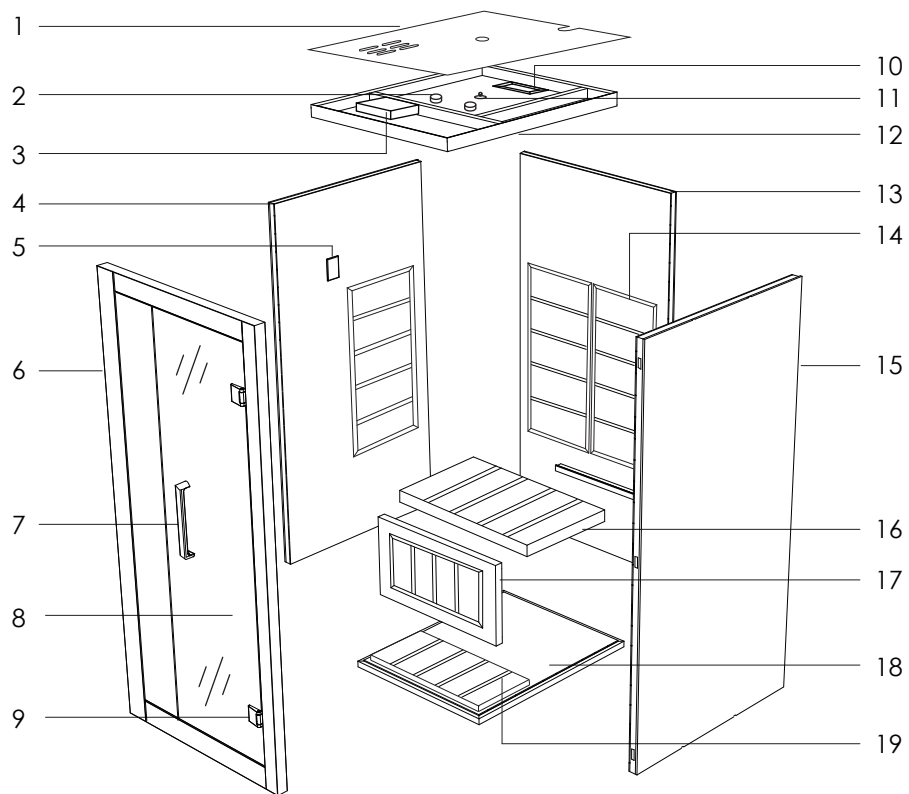
Important safety guides



Please strictly follow safety precautions when using!

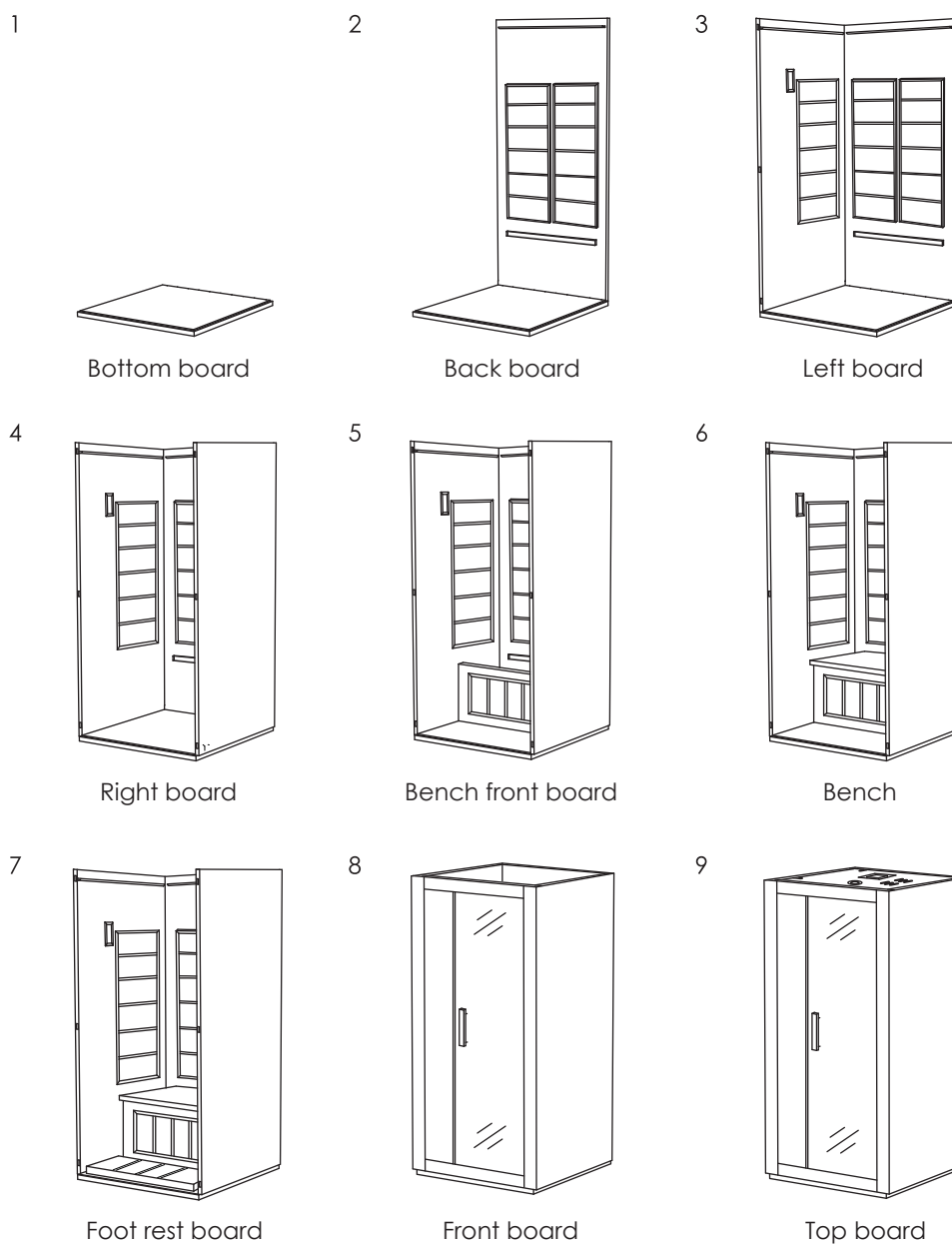
1. Children must be using the equipment under the care of an adult. For safety, do not play with it ;
2. Do not insert objects such as fingers or sticks into the heating tube plate to prevent danger ;
3. Never pour water to the equipment or the heating pipe (board) ;
4. Do not use or store flammable gas or liquid such as hair spray, oil paint, gasoline, etc near the equipment to avoid fire ;
5. Do not place items inside or on top of the sauna ;
6. Do not touch the power control panel and any electrical components with wet hands to prevent electric shock ;
7. It is forbidden to use the equipment during thunderstorms to prevent electric shock ;
8. Do not tilt the equipment, do not use sharp objects to strike ;
9. Shut down the equipment for half an hour after 4 hours continuous working ;
10. Do not operate the equipment in a long-term high temperature environment ;
11. Use with caution after drinking alcohol ;
12. Those who have hemophilia or are prone to bleeding should avoid using it ;
13. Please consult your doctor before using if you are in period of disease and taking medicine ;
14. Do not use after intense exercise, wait until the body temperature returns to normal before using ;
15. If you feel any discomfort, please stop using immediately ;
16. Mind your head when get in and out of the equipment ;
17. Do not sleep inside the equipment when it is working ;
18. Do not use any bath products in the sauna ;
19. To avoid burns, do not touch the heating element ;
20. **WARNING:**Covering the heater or infrared emitter causes fire risk!
21. If you have any questions, please call the supplier.

Structure of infrared sauna



- | | | | |
|-----------------|----------------|-----------------------|----------------------|
| 1 Duster cover | 6 Front board | 11 Temperature sensor | 16 Bench |
| 2 Speaker | 7 Handle | 12 Top board | 17 Bench front board |
| 3 Control box | 8 Door glass | 13 Back board | 18 Bottom board |
| 4 Left board | 9 Hinge | 14 Heater frame | 19 Foot rest board |
| 5 Control panel | 10 Ventilation | 15 Right board | |

Installation process

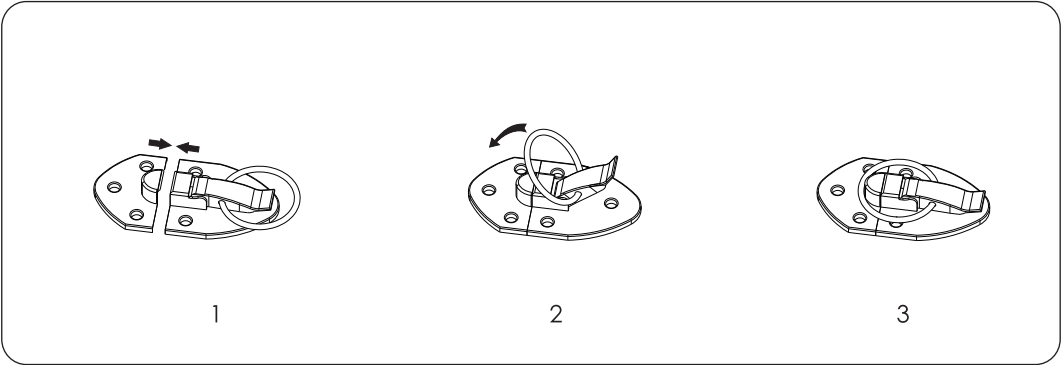


* The structure may vary from different models. Due to our continued product improvement, product illustrated on this instruction manual may vary slightly from the actual product.

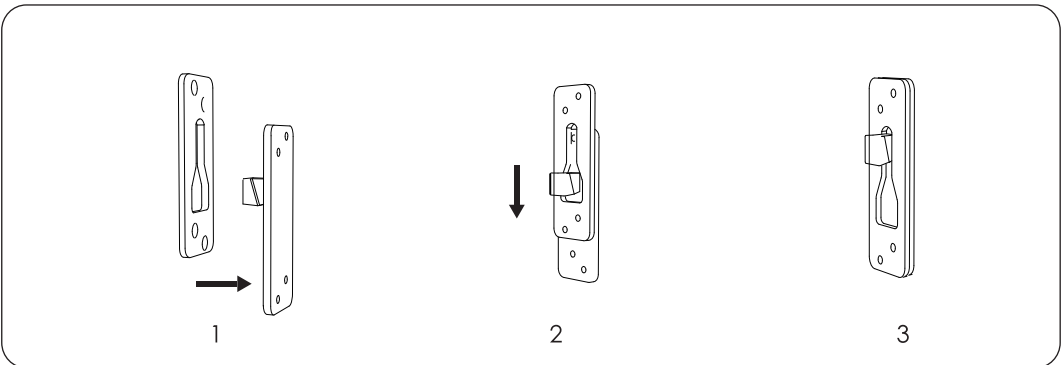
Installation precautions

Large plate assembly

Suitable for processes 3 and 4
Installation method of the left
and right side panels



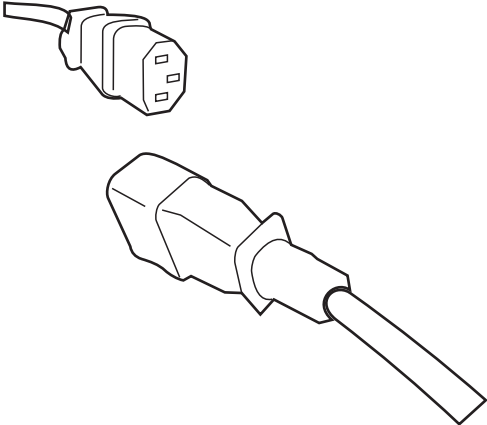
Suitable for process 8
Installation method of
the front board



Installation precautions

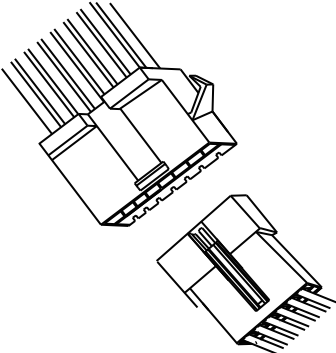
Electrical connection

1



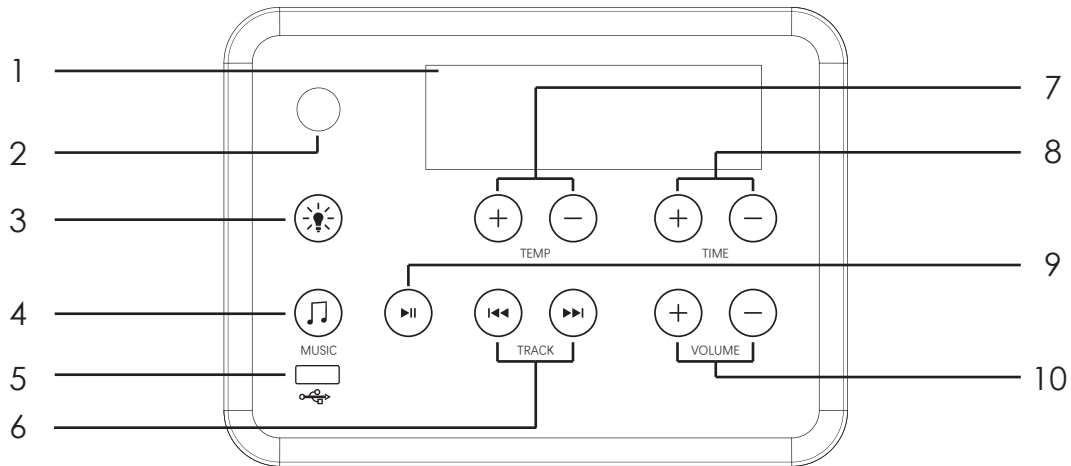
Conection cable

2



Connection plug

Control panel operation



1 Display screen

For temperate,time,FM.

2 Power button

Touch this key to turn on or turn off it.

3 Light button

Touch the key to turn on/off the light inside of cabin .

4 Music button

Touch this key to adjust bluetooth, MP3 and FM.FM from 85.7-108.0M.

5 USB function

Touch this key to start USB function.

6 Song selection function

Press key upon the TRACK for last song and key for next one.

7 Temp control

Touch the '+' and '-' button to increase or decrease the temperature. If the 'heat' light is on, the temperature setting will increase one degree every time the '+' button is pushed. If pressed for three seconds, the setting will increase quickly. Decrease the temperature in the same manner by pressing the '-' button. After the sauna reaches the desired temperature, the 'heat' light turns off. The Fahrenheit and Centigrade display can be switched: press the temperature button "+" and "-" at the meantime.

8 Time control

Touch the '+' and '-' buttons to set the timer from 5 to 90 minutes. If pressed for three seconds, the timer will increase quickly. To extend the sauna session, reset the timer again.

9 Pause/Play

When music playing in this mode, this key is for pause or play. In FM mode, long press for 5 seconds to enter FM station search automatic.

10 Volume control

Press '+' and '-' to increase or decrease volume.

Color light function

5 seconds press on "LIGHT" button, shows "2N" on display.

Short press "LIGHT" button to change color of LED light.

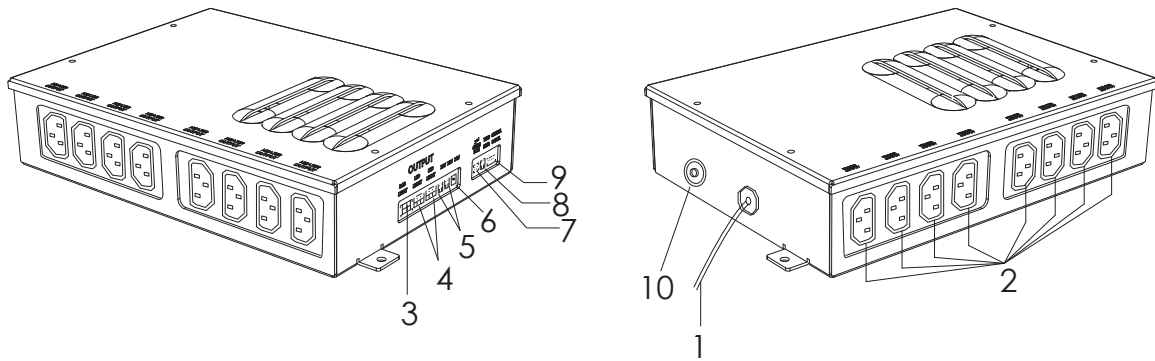
Press to convert one color at a time and it can be cycled and memorized (L0 shade, L1 all bright, L2-17 corresponding to different colors).

Quick press on TEMP+, can control LED 1 ON/OFF (if available).

Quick press on TEMP-, can control LED 2 ON/OFF (if available).

Quick press on TIME+, can control RGB Light ON/OFF (if available).

Control box



This control box is the control center of sauna room, it is installed on the top board, input/output connections as below.

- | | |
|---|--|
| 1 Main power of sauna room. | 6 24V output |
| 2 Heaters power output cable (HT1--HT8) | 7 If necessary can connect another power box |
| 3 Reading lamp power output cable | 8 Temperature sensor connection port |
| 4 Color lamp power output cable(optional) | 9 Control panel connecting |
| 5 12V output | 10 Fuse reset(20A) |

Maintenance

Before using

1. Please be sure to follow the instruction manual before operations ;
2. Prepare a towel on the seat bench to prevent sweat from dripping onto it. To avoid affecting the quality and beauty of wood.

After using

1. Please unplug the power plug in time ;
2. Open the door to let the heat and humid water vapor dissipate and keep the sauna cabin dry.

Stain on wood

1. The outer cabin can be wiped with a wrung wet towel; The inner cabin can be wiped by small vacuum cleaner.
2. Do not use organic solvents to decontaminate, such as gasoline, alcohol, etc. wipe the sauna surface;
3. Do not use sharp objects in sauna cabin to prevent scratching woods.

Stain on glass

1. Wipe the glass with soft paper;
2. Stubborn stains can be wiped with a damp cloth, then dry with a dry cloth;
3. Do not scratch the surface with a sharp object to prevent scratching the glass.

Transportation and storage

1. Avoid water, snow and intense impact during the transportation;
2. Do not store it in a humid environment;
3. The northern climate is relatively dry, often wipe the product with a wrung wet towel;
4. The climate in the south is relatively humid and can be ventilated and dried frequently.

Trouble shooting

Number	Problems	Possible reasons	Countermeasure
1	Indicator light for powersupply not working	The connector is not connected properly	Check the connector or replace a new one
		No power supply input	Chick the circuitry (especially weather there is power supply input)
		Indicator light is broken	Replace the circuitry panel
2	Indicator light for function is not working	The heating indicator light is broken	Replace the relevant control panel
		The circuit board or components are broken	Replace the circuit board
		The temperature sensor is broken	Check if the connect is loosen and replace it
3	Infrared Heater not heating up	The heater is broken	Replace with a new one Of the same specifications
		The wire junction or the heater's wire is loosen	Check and make them tight
		The temperature sensor is broken	Check if junction of the temperature sensor is loosen and replace it
		The circuit board of the relay is not work	Replace the circuit board
4	Odor from the sauna	The circuit's problems	1) There is eyewinker around, remove it 2) Some heater's temperature over high,cut off the power supply,replace it. 3) Parts on the circuitry is broken

Trouble shooting

Number	Problems	Possible reasons	Countermeasure
5	Light bulb is not working	Light bulb is burned out	Replace the light bulb
		Light bulb wiring is loosen	Replace the lamp holder
		Problems with electrical control panel	Repair or replace it
6	Sauna is not power up	Power cord is unplug	Plug back power cord to outlet
		Outlet has no power	Check outlet or circuit breaker
		Power supply or circuit panel is broken	Replace the power supply or related circuitry board
7	Music Player doesn't work	Power connector is loose or damage	Check connector or replace it
		DC power supply is no power to the music player	Check DC power supply wiring or replace the power supply
		Music player is defective	Replace the music player
8	Speaker does not work	The speaker is broken	Replace with a new one of the same specifications
		The speaker wire is loosen	Reconnect the speaker wire
		The power indicator light for music player is off	Turn on the switch to start work
9	The temperature display show "Er1"	NTC open circuit, wire is not well connected	Check and well connect
10	The temperature display show "Er2"	NTC open circuit	Change Thermostat
11	The temperature display show "Er3"	Under -15°	Can't be functional under too low ambient temperature
12	The temperature display show "Er4"	Thermostat breakdown	Change Thermostat

Saunas and Contraindications

Saunas and Medications

Individuals who are using prescription drugs should seek the advice of their personal physician or a pharmacist for possible changes in the drugs effect when the body is exposed to far infrared waves or elevated body temperature. Diuretics, barbiturates and beta-blockers may impair the body's natural heat loss mechanisms. Some over the counter drugs such as antihistamines may also cause the body to be more prone to heat stroke.

Saunas and Children

The core body temperature of children rises much faster than adults. This occurs due to a higher metabolic rate per body mass, limited circulatory adaptation to increased cardiac demands and the inability to regulate body temperature by sweating. Consult with the child's Pediatrician before using the sauna. Persons under the age of 16 should not use a sauna

Saunas and the Elderly

The ability to maintain core body temperature decreases with age. This is primarily due to circulatory conditions and decreased sweat gland function. The body must be able to activate its natural cooling processes in order to maintain core body temperature.

Saunas and Cardiovascular Conditions

Individuals with cardiovascular conditions or problems (hypertension / hypo tension), congestive heart failure, impaired coronary circulation or those who are taking medications, which might affect blood pressure, should exercise extreme caution when exposed to prolonged heat. Heat stress increases cardiac output, blood flow, in an effort to transfer internal body heat to the outside environment via the skin (perspiration) and respiratory system. This takes place primarily due to major changes in the heart rate, which has the potential to increase by thirty (30) beats per minute for each degree increase in core body temperature.

Saunas and Alcohol

Contrary to popular belief, it is not advisable to attempt to "Sweat Out" a hangover. Alcohol intoxication decreases a person's judgment; therefore, they may not realize it when the body has a negative reaction to high heat. Alcohol also increases the heart rate, which may be further increased by heat stress.

Saunas and Chronic Conditions / Diseases Associated With a Reduced Ability to Sweat or Perspire

Parkinson's, Multiple Sclerosis, Central Nervous System Tumors and Diabetes with Neuropathy are conditions that are associated with impaired sweating.

Saunas and Hemophiliacs / Individuals Prone To Bleeding

The use of Infrared saunas should be avoided by anyone who is predisposed to bleeding.

Saunas and Fever

An individual that has a fever should not use any type of sauna.

Saunas and Insensitivity to Heat

An individual that has insensitivity to heat should not use any type of sauna.

Saunas and Pregnancy

Pregnant women should consult a physician before using any type of sauna because fetal damage can occur with a certain elevated body temperature. It is advised at any stage of pregnancy to not use a sauna

Saunas and Menstruation

Heating of the low back area of a women during the menstrual period may temporarily increase their menstrual flow. Some women endure this process to gain pain relief commonly associated with their cycle whereas others simply choose to avoid sauna use during that time of the month.

Saunas and Joint Injury

If you have a recent (acute) joint injury, it should not be heated for the first 48 hours after an injury or until the hot and swollen symptoms subside. If you have a joint or joints that are chronically hot and swollen, these joints may respond poorly to vigorous heating of any kind. Vigorous heating is strictly contra-indicated in cases of enclosed infections be they dental, in joints or in any other tissues.

Saunas and Implants

Metal pins, rods, artificial joints or any other surgical implants generally reflect far infrared waves and thus are not heated by this system; nevertheless, you should consult your surgeon prior to using an Infrared Sauna. Certainly, the usage of an Infrared Sauna must be discontinued if you experience pain near any such implants. Silicone implants or silicone prostheses may absorb far infrared energy or may be warmed by the far infrared waves. Since silicone melts at over 200°C (392°F), it should not be adversely affected by the usage of Infrared saunas. It is still advised that you check with your surgeon and possibly a representative from the implant manufacturer to be certain.

In the rare event, you experience pain and/or discomfort, immediately discontinue sauna use.

Warranty Information

Vidalux warrants its products to be free of defects in material and workmanship.

This warranty extends only to:

1. a retail purchaser of a sauna or parts directly from an official supplier;
2. the authorized wholesale purchaser of a sauna or parts directly from the supplier ; or
3. a retail purchaser of a sauna or parts from an authorized wholesaler.

However, in the event of a sale between 2 private parties, transfer or conveyance of a sauna or parts from any of the three (3) proceeding persons or entities, any rights, duties and obligations associated with this warranty shall be null and void and of no further force and effect.

The sauna or parts must be purchased and used within one year of the manufactured date.

The sauna or parts must be placed in an indoor environment unless the sauna or parts are specifically designed for outdoor use. If an indoor sauna or parts are placed in an outdoor environment, warranty shall be null and void and of no further force and effect. The controls, heaters, electrical parts and wiring must be kept dry at all times and not exposed to any water or liquids.

The warranty begins on the original date of purchase, and is valid only upon registration of the product. Registration must take place within 90 days of purchase. To receive warranty service, the purchaser must contact Vidalux immediately on discovering the claim/fault to prevent further concerns.

This warranty covers manufacturing defects in materials and workmanship encountered in normal use of this product, and shall not apply to the following, including, but not limited to: applications and usage for which this product was not intended; altered product or serial numbers; cosmetic damage or exterior finish reported after installation; accidents, abuse, neglect, fire, water, lightning or other acts of nature; use of products, equipment, systems, utilities, services, parts, supplies, accessories, applications, installations, repairs, external plumbing and leaks, external wiring, circuit breakers, fuses or connectors not supplied and authorized by Vidalux or which damage this product or result in service problems; incorrect electrical line voltage, fluctuations, and surges; customer adjustments and failure to follow operating instructions, cleaning, maintenance and environmental instructions that are covered and prescribed in the instruction book; consumable items including light bulbs.

Vidalux shall not be liable for the loss of use of the sauna or other incidental or consequential damages. Under no circumstances shall Vidalux or any of its representatives be held liable for injury to any persons or damages to any properties. Specifications are subject to change without notice.

Vidalux uses the highest quality wood in our product lines. All structures using wood are susceptible to minor dents, scratches and scuffing. This is normal and will not affect the integrity or operation of your sauna.

Wood is a living material that continues to respond to climate conditions, even after being manufactured into a sauna. Variations in the color or grain, and irregularities such fine cracks are part of the natural beauty of the wood and in no way should be considered defects. During normal operation, wood may crack slightly due to the changes in moisture level. This will not affect the structural integrity of the sauna.

Prior to shipping, the wood is inspected for consistency, color and quality. Our saunas are shipped around the globe, and can experience slight blemishes, scratches or scuffs in transit. In most cases, these blemishes on the exterior of the sauna can be concealed by using a small amount of furniture polish, oil or other furniture treatment. The interior blemishes, scratches, or scuffs can be either left alone, sanded or combination of gluing plus sanding. Please avoid any treatment containing benzene or a high concentration of alcohol.

ATTENTION: Shipping damage must be notated on the delivery note. Vidalux **MUST** be notified of any damage to your sauna within 48 hours of receiving the items. Failure to notify us within the established time frame will result in the owner taking full responsibility for cost of **ALL REPLACEMENT PARTS** including shipping and handling fees.

Completion Form

This form must be filled out by the installer and electrician (where applicable) in order to validate the warranty. You are required to register the warranty online at www.vidalux.co.uk

You MUST register the product warranty within 90 days following delivery

PLEASE RETAIN THIS CERTIFICATE FOR FUTURE REFERENCE

Shower Details

Model No.

Date Of Delivery

Invoice No.

Install Date

Electric Installation

Installer Name

Company

Address

Town/City

Post Code

Contact Tel

Part P Reg No.

Date

Signature